

FROM THE OFFICE OF

# CHARLES O. GEORGI COMPANY

2215 West County Road B

Saint Paul, Minnesota 55113

REGISTERED CIVIL ENGINEER AND LAND SURVEYOR

## Certificate of Survey

*I Hereby Certify that this plat shows a survey made by me of the property described on this plat, and that the corners are correctly placed as shown, and that all locations have been correctly shown.*

Surveyed For George Halek Jr.

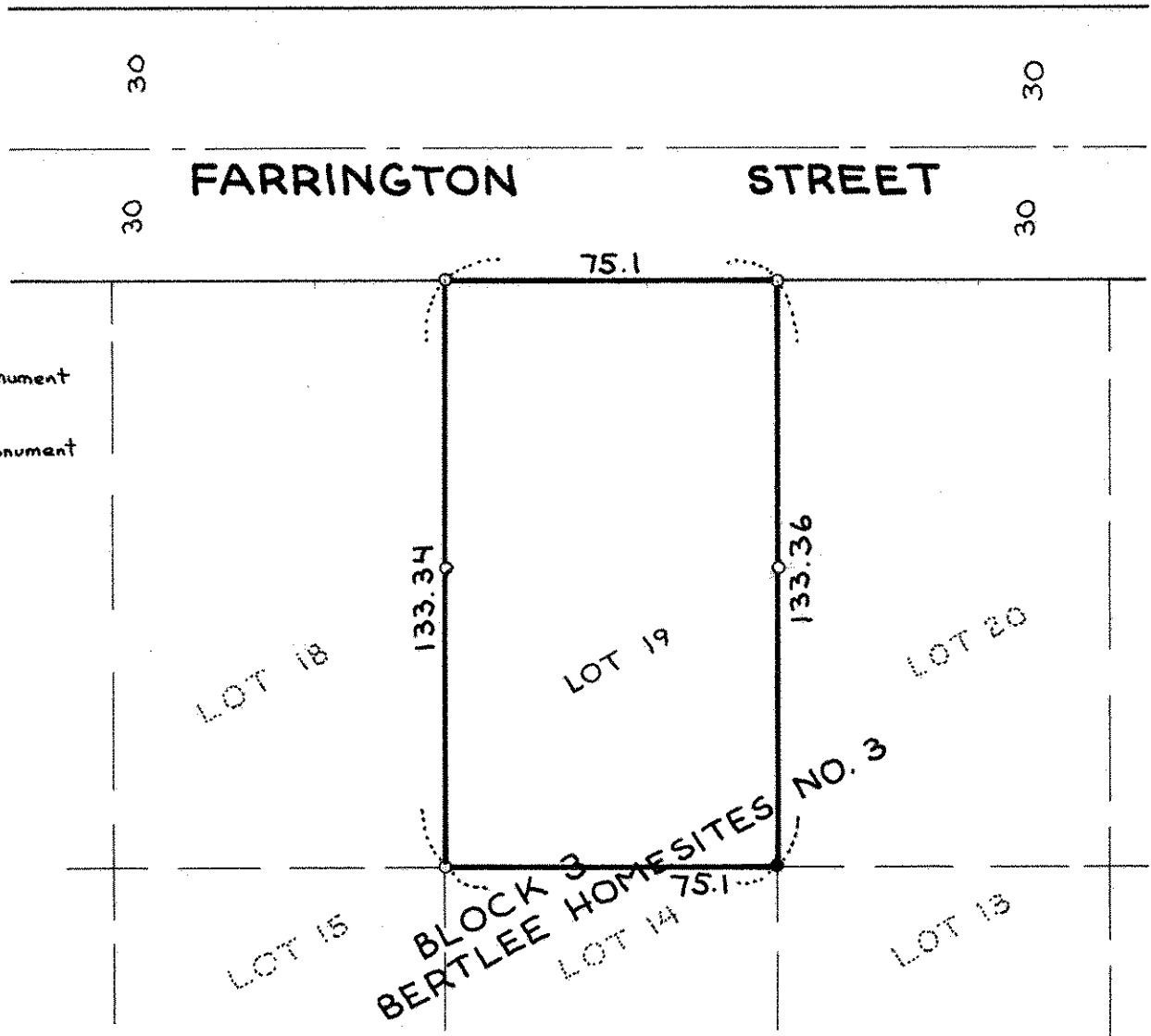
Date September 1974

Scale 1" = 40'

By Charles O. Georgi  
REGISTERED LAND SURVEYOR

**Description:**

Lot 19,  
Block 3,  
Bertlee Homesites No. 3  
Ramsey County, Minn.



- Denotes Iron Pipe Monument
- Denotes Iron Pipe Monument found in place