

FROM THE OFFICE OF

# CHARLES O. GEORGI COMPANY

2215 West County Road B

Saint Paul, Minnesota 55113

REGISTERED CIVIL ENGINEER AND LAND SURVEYOR



*I Hereby Certify that this plat shows a survey made by me of the property described on this plat, and that the corners are correctly placed as shown, and that all locations have been correctly shown.*

Surveyed For Nancy Hamann

Date October 1974

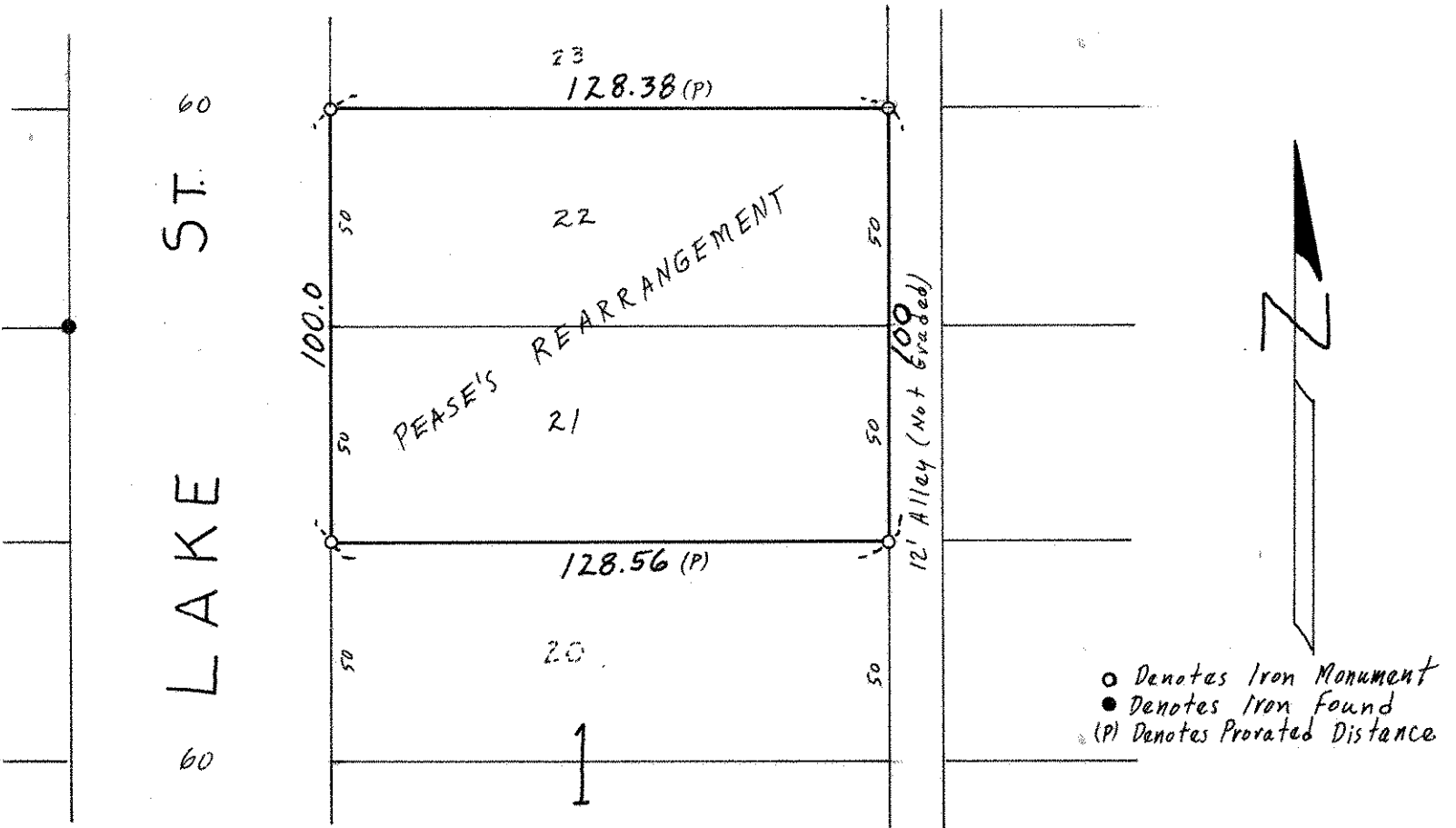
Scale 1" = 40'

By Charles O. Georgi  
REGISTERED LAND SURVEYOR

**Description:**

Lots 21 and 22, Block 1, Pease's Rearrangement of Lots 3, 4, 7, and 8, Prospect Hill according to the plat on file.

Ramsey County, Minnesota



**Surveyors Note:**

This survey was prorated with Prospect Hill and SW 1/4 of Section 17.