

N.E. 14, 29, 22

FROM THE OFFICE OF

CHARLES O. GEORGI COMPANY

2215 West County Road B

Saint Paul, Minnesota 55113

REGISTERED CIVIL ENGINEER AND LAND SURVEYOR



I Hereby Certify that this plat shows a survey made by me of the property described on this plat, and that the corners are correctly placed as shown, and that all locations have been correctly shown.

Surveyed For *Building Coordinators*

Date *December 1974*

Scale *1" = 40'*

By *Donald W. Schmiel*
REGISTERED LAND SURVEYOR

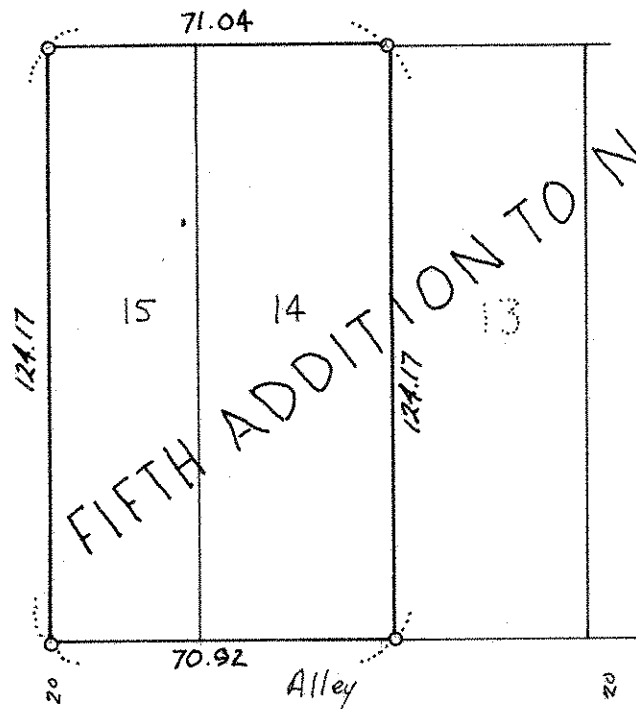
Description:

*Lots 14 and 15, Block 13,
Fifth Addition to North St. Paul
Ramsey County, Minnesota.*



§ ELDRIDGE AVE. §

SIXTH ST.



§ denotes iron pipe monument

