

FROM THE OFFICE OF

CHARLES O. GEORGI COMPANY

2215 West County Road B

Saint Paul, Minnesota 55113

REGISTERED CIVIL ENGINEER AND LAND SURVEYOR



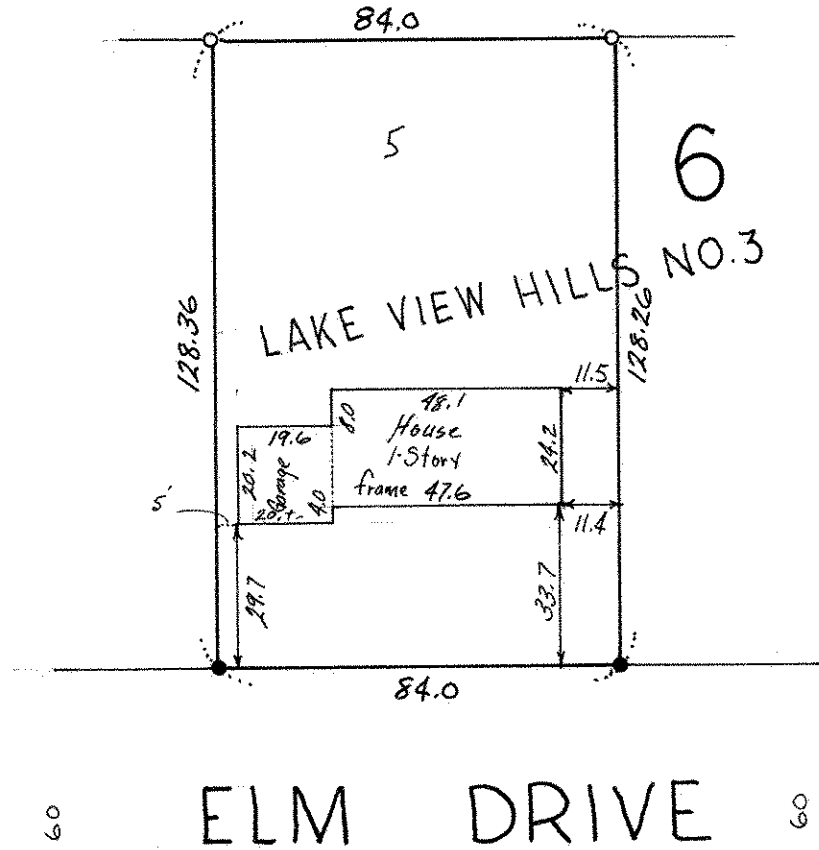
I Heroby Certify that this plat shows a survey made by me of the property described on this plat, and that the corners are correctly placed as shown, and that all locations have been correctly shown.

Surveyed For Hiner Const.
 Date October 1974
 Scale 1" = 40'

By Charles O. Georgi
 REGISTERED LAND SURVEYOR

Description:

Lot 5,
 Block 6,
 Lake View Hills No. 3
 Ramsey County,
 Minnesota.



o denotes iron pipe monuments
 • denotes iron pipe monuments found in place

60 ELM DRIVE 60