

FROM THE OFFICE OF

CHARLES O. GEORGI COMPANY

2215 West County Road B

Saint Paul, Minnesota 55113

REGISTERED CIVIL ENGINEER AND LAND SURVEYOR



I Hereby Certify that this plat shows a survey made by me of the property described on this plat, and that the corners are correctly placed as shown, and that all locations have been correctly shown.

Surveyed For *Al Rames*

Date *August 1974*

Scale *1" = 40'*

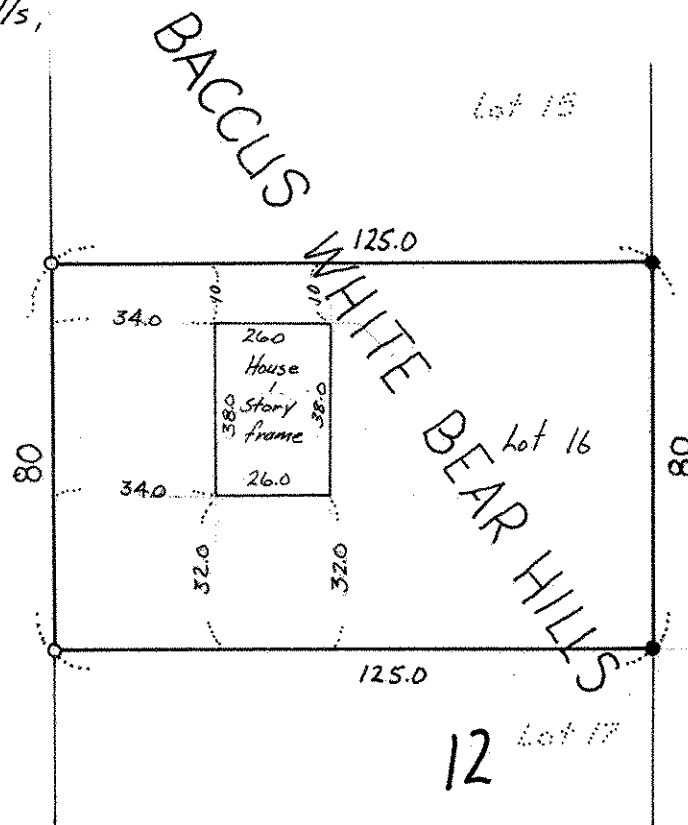
By *Charles O. Georgi*

REGISTERED LAND SURVEYOR

Description:

*Lot 16,
Block 12,
Bacchus White Bear Hills,
Ramsey County,
Minnesota.*

60
ROLLING VIEW DRIVE



*o denotes iron monument.
• denotes iron monument
found in place.*