

NE 13 30 23

FROM THE OFFICE OF

CHARLES O. GEORGI COMPANY

2215 West County Road B

Saint Paul, Minnesota 55113

REGISTERED CIVIL ENGINEER AND LAND SURVEYOR

Certificate of Survey

I Hereby Certify that this plat shows a survey made by me of the property described on this plat, and that the corners are correctly placed as shown, and that all locations have been correctly shown.

Surveyed For *Steve Roberts*

Date *May 1974*

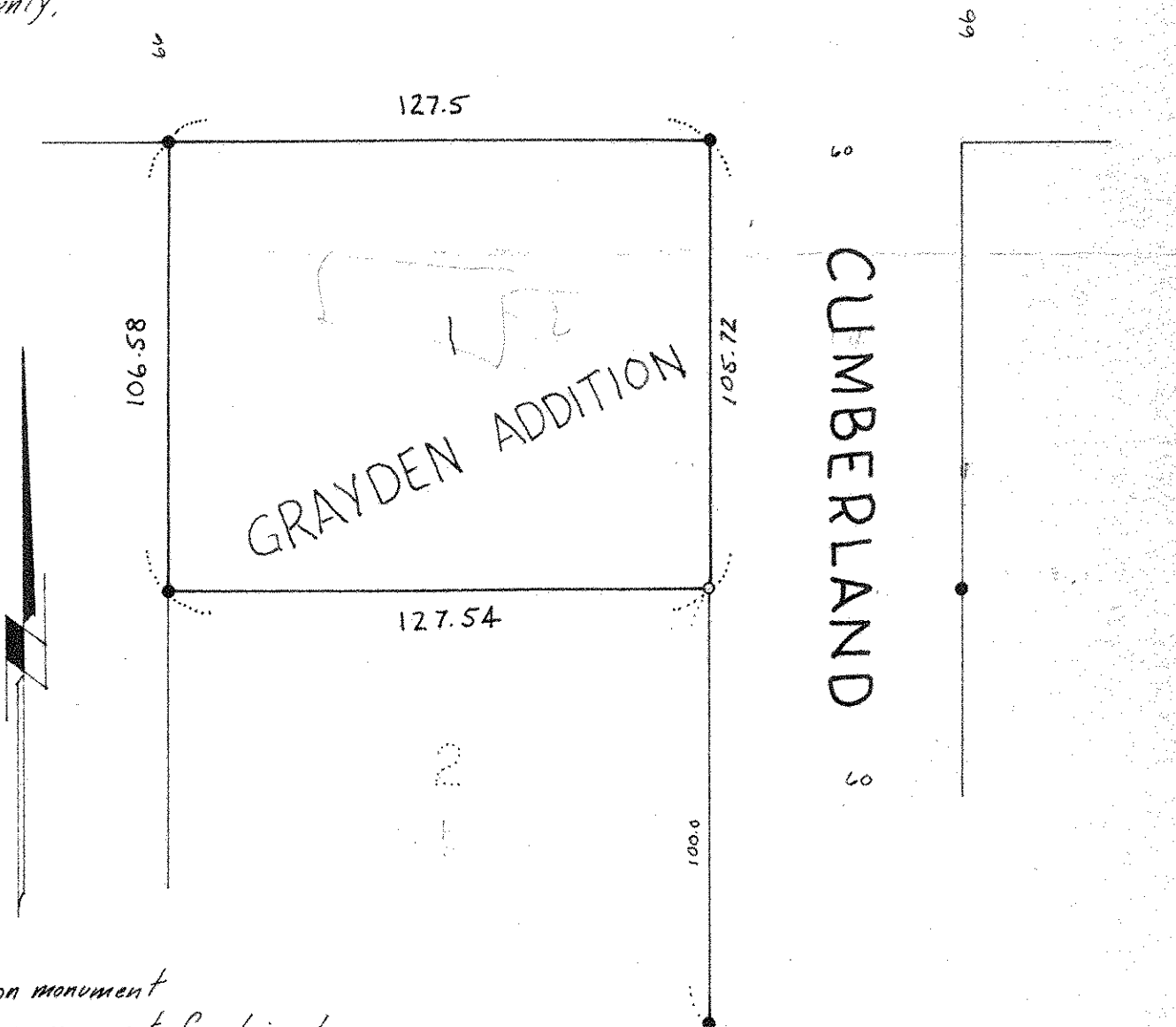
Scale *1" = 40'*

By *Charles O. Georgi*
REGISTERED LAND SURVEYOR

Description:

*Lot 1,
Block 2,
Grayden Addition
Ramsey County,
Minnesota.*

COUNTY ROAD G 2



*o denotes iron monument
● denotes iron monument found in place.*