

FROM THE OFFICE OF

CHARLES O. GEORGI COMPANY

2215 West County Road B

Saint Paul, Minnesota 55113

REGISTERED CIVIL ENGINEER AND LAND SURVEYOR



**Certificate
of Survey**

I Hereby Certify that this plat shows a survey made by me of the property described on this plat, and that the corners are correctly placed as shown, and that all locations have been correctly shown.

10/16/74 Added Lot 2 and House location

Surveyed For Steve Roberts

Date May 1974 - October 1974

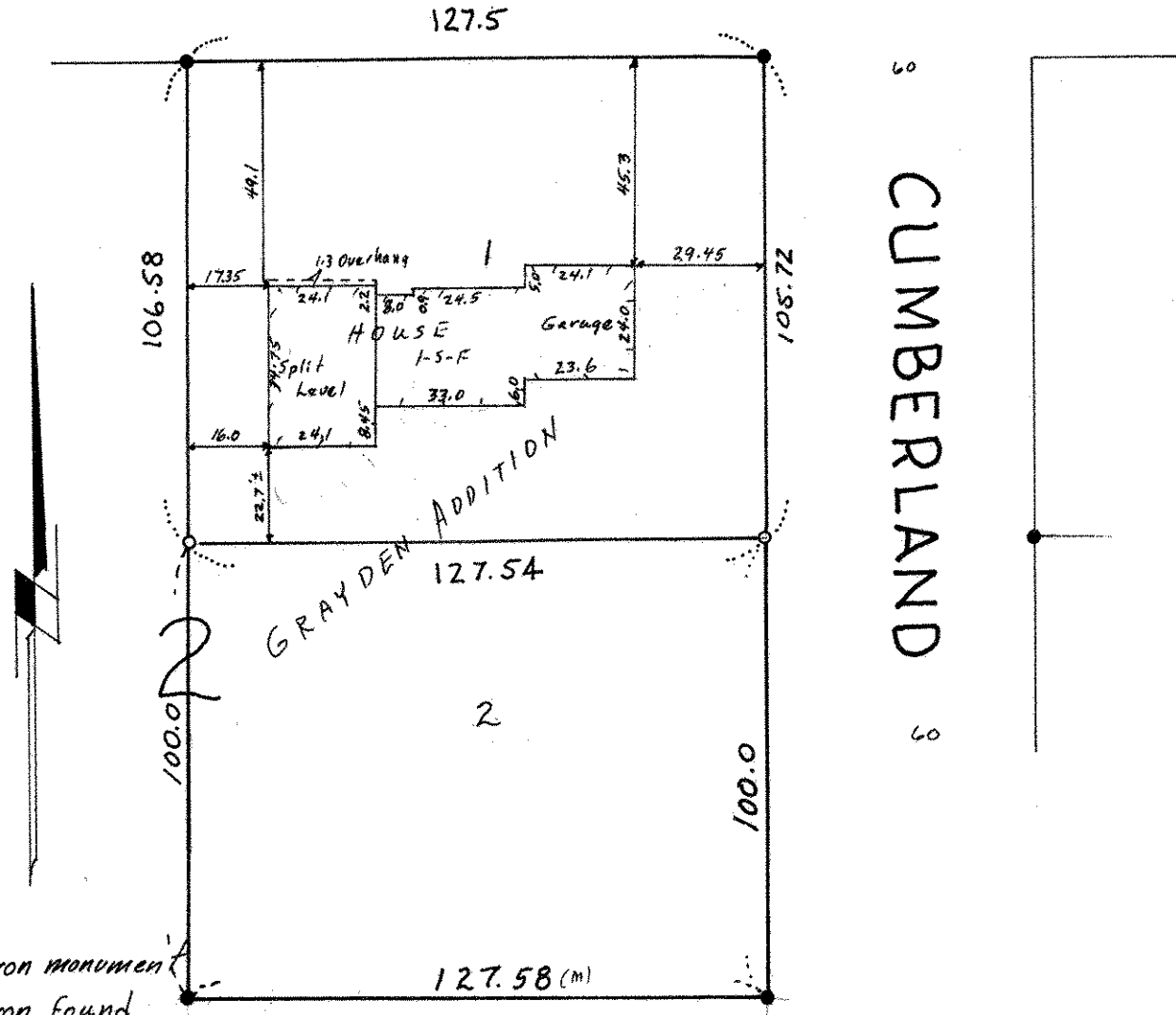
Scale 1" = 40'

By Charles O. Georgi
REGISTERED LAND SURVEYOR

Description:

Lots 1 and 2,
Block 2,
Grayden Addition
Ramsey County,
Minnesota.

COUNTY ROAD G 2



o denotes iron monument
● denotes iron found