

FROM THE OFFICE OF

**CHARLES O. GEORGI COMPANY**

2215 West County Road B

Saint Paul, Minnesota 55113

REGISTERED CIVIL ENGINEER AND LAND SURVEYOR



**Certificate  
of Survey**

*I Hereby Certify that this plat shows a survey made by me of the property described on this plat, and that the corners are correctly placed as shown, and that all locations have been correctly shown.*

*10/16/74 Added Lot 2 and House location*

Surveyed For *Steve Roberts*

Date *May 1974 - October 1974*

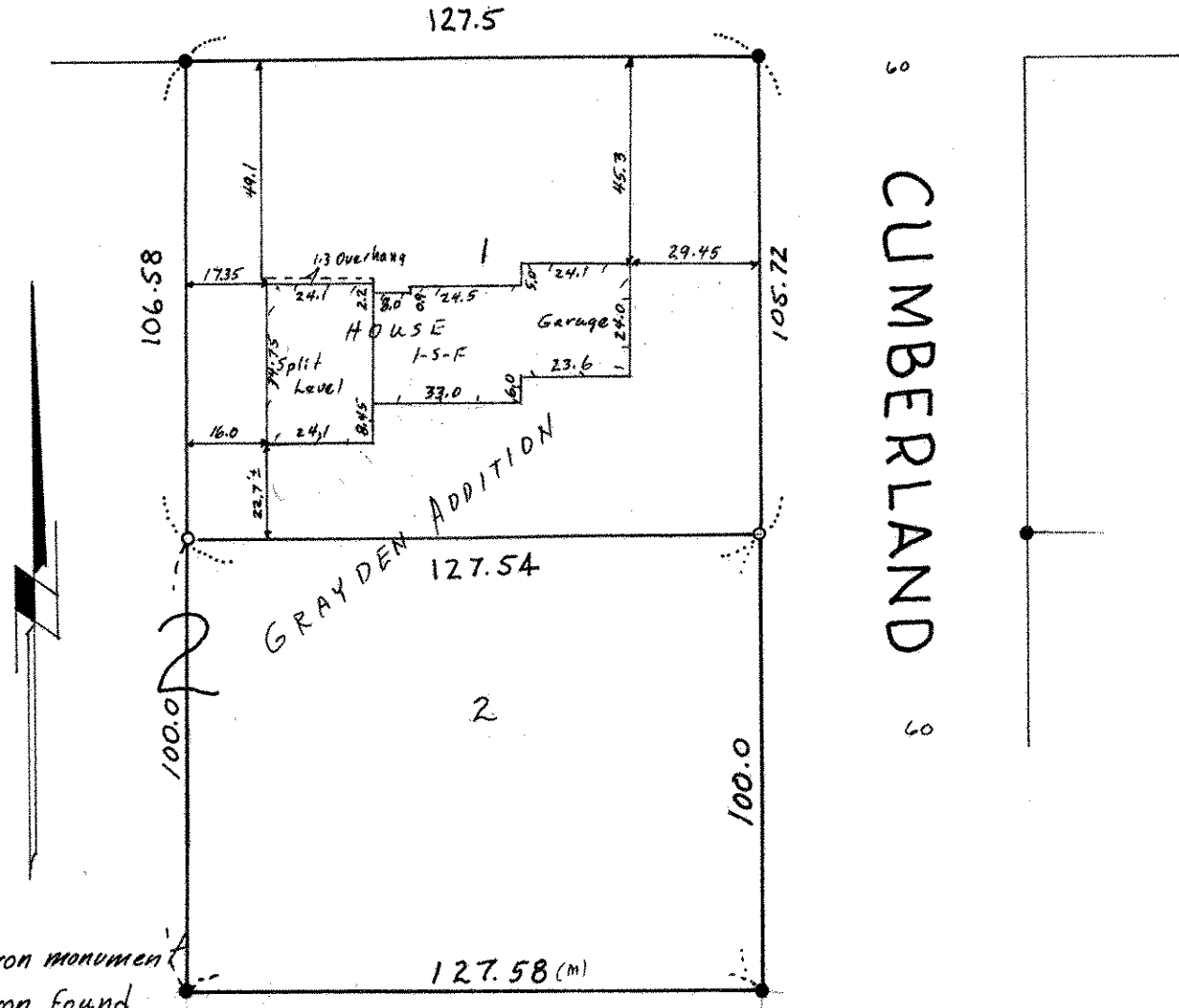
Scale *1" = 40'*

By *Charles O. Georgi*  
REGISTERED LAND SURVEYOR

**Description:**

*Lots 1 and 2,  
Block 2,  
Grayden Addition  
Ramsey County,  
Minnesota.*

COUNTY ROAD G 2



o denotes iron monument  
 • denotes iron found