

# CHARLES O. GEORGI COMPANY

2215 West County Road B

Saint Paul, Minnesota 55113

REGISTERED CIVIL ENGINEER AND LAND SURVEYOR

## Certificate of Survey

I Hereby Certify that this plat shows a survey made by me of the property described on this plat, and that the corners are correctly placed as shown, and that all locations have been correctly shown. Boundary dimensions in accord

with Wolfgram Survey 11/4/68

1/12/72. Added entire parcel description, notes, etc.

9/21/79 Placed iron pins

2/1/80 Checked iron pins & building locations

Surveyed For Victor J. Lametti

Date November 1974

surveyed on 4/1/80 for:

Interstate Detroit Diesel Allison

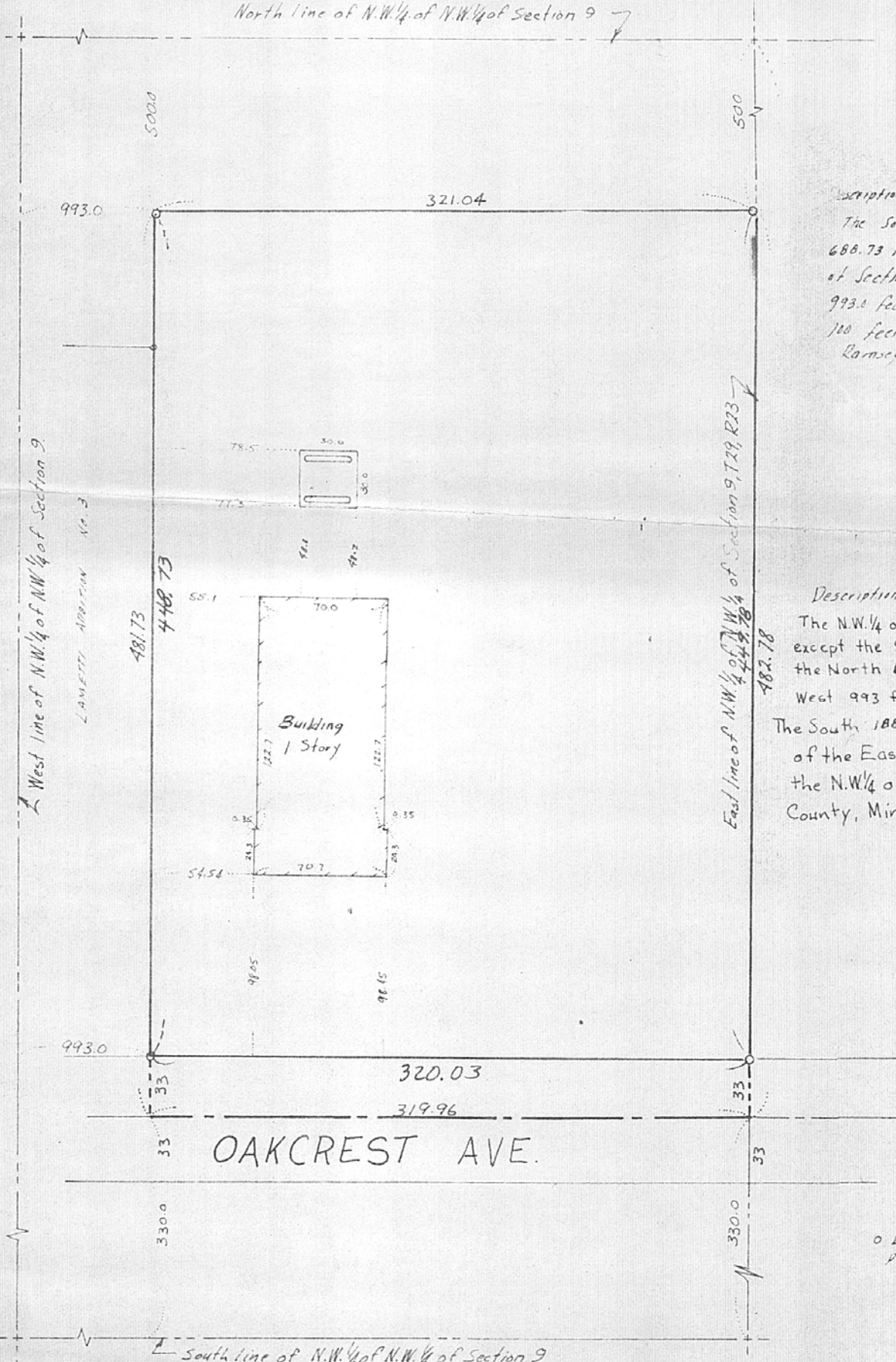
By

*Charles O. Georgi*  
REGISTERED LAND SURVEYOR

Description (Entire Parcel)

The NW 1/4 of the NW 1/4 of Section 9, T29, R23 except the South 330 feet thereof, except the North 500 feet thereof, and except the West 993 feet thereof. Subject to Oakcrest Ave., Ramsey County, Minn.

North line of N.W. 1/4 of N.W. 1/4 of Section 9



Description: (part)

The South 188.73 feet of the North 688.73 feet of the NW 1/4 of the NW 1/4 of Section 9, T29, R23 except the West 993.0 feet thereof and except the East 100 feet thereof. Ramsey County, Minn.

Description: (Part)

The N.W. 1/4 of the N.W. 1/4 of Section 9, T29, R23 except the South 330 feet thereof, and except the North 688.73 feet thereof, and except the West 993 feet thereof, and the South 188.73 feet of the North 688.73 feet of the East 100.0 feet of the N.W. 1/4 of section 9, T29, R23, Ramsey County, Minnesota

o Denotes Iron Monument placed for Lametti Addition No 3



FROM THE OFFICE OF

# CHARLES O. GEORGI COMPANY

2215 West County Road B

Saint Paul, Minnesota 55113

REGISTERED CIVIL ENGINEER AND LAND SURVEYOR

## Certificate of Survey

I Hereby Certify that this plat shows a survey made by me of the property described on this plat, and that the corners are correctly placed as shown, and that all locations have been correctly shown. Boundary dimensions in accord with Willgram Survey 11/4/68 11/2/74 added entire parcel description, notes, etc.

Surveyed For Victor J. Lametti

Date November 1974

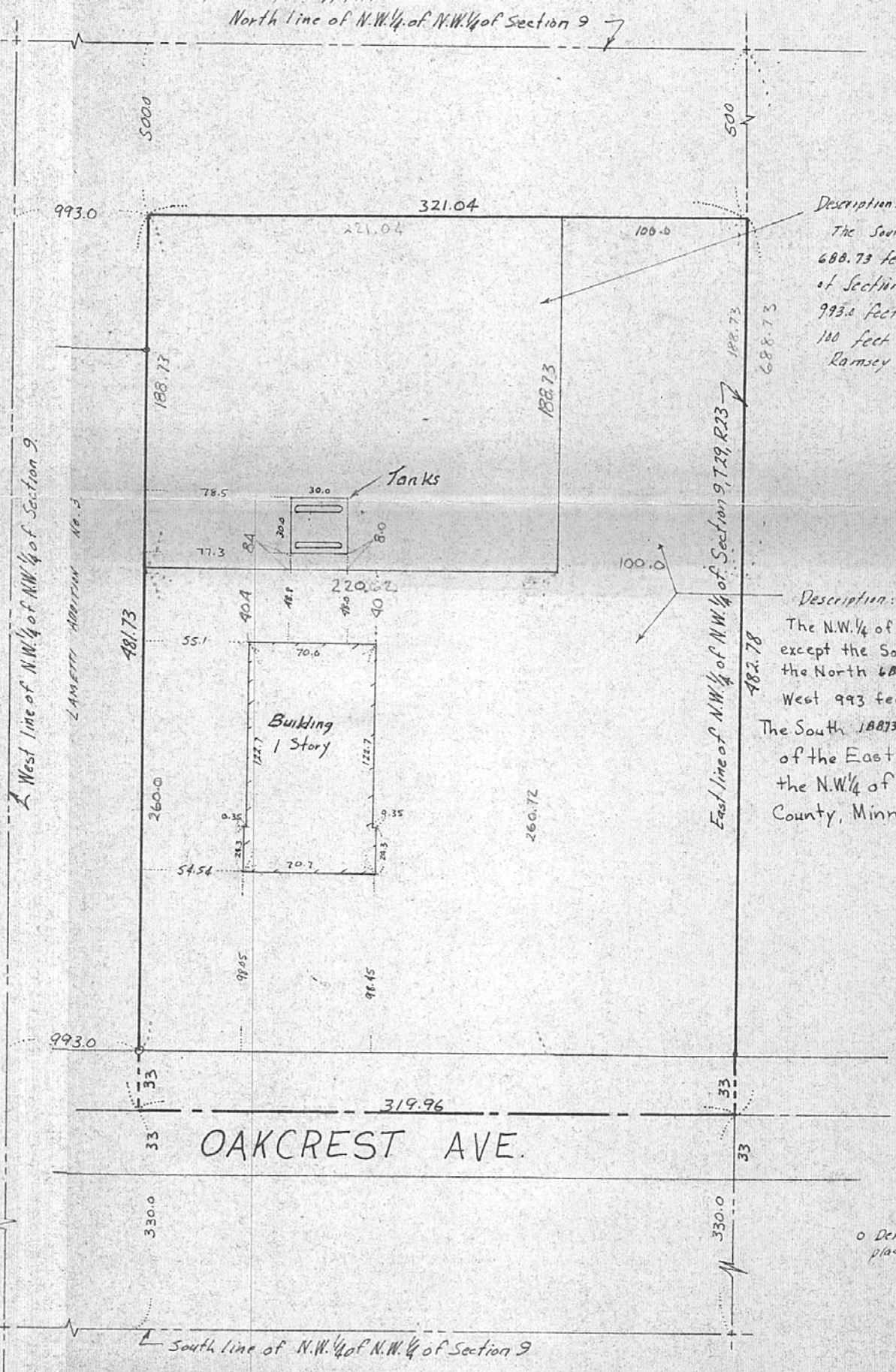
Scale 1" = 60'

By Charles O. Georgi  
REGISTERED LAND SURVEYOR

Description (Entire Parcel)

The NW<sup>1</sup>/<sub>4</sub> of the NW<sup>1</sup>/<sub>4</sub> of Section 9, T29, R23 except the South 330 feet thereof, except the North 500 feet thereof, and except the West 993 feet thereof. Subject to Oakcrest Ave., Ramsey County, Minn.

North line of N.W.<sup>1</sup>/<sub>4</sub> of N.W.<sup>1</sup>/<sub>4</sub> of Section 9



Description: (part)

The South 188.73 feet of the North 688.73 feet of the NW<sup>1</sup>/<sub>4</sub> of the NW<sup>1</sup>/<sub>4</sub> of Section 9, T29, R23 except the West 993.0 feet thereof and except the East 100 feet thereof. Ramsey County, Minn

Description: (Part)

The N.W.<sup>1</sup>/<sub>4</sub> of the N.W.<sup>1</sup>/<sub>4</sub> of Section 9, T29, R23 except the South 330 feet thereof, and except the North 688.73 feet thereof, and except the West 993 feet thereof, and The South 188.73 feet of the North 688.73 feet of the East 100.0 feet of the N.W.<sup>1</sup>/<sub>4</sub> of the N.W.<sup>1</sup>/<sub>4</sub> of section 9, T29, R23, Ramsey County, Minnesota

o Denotes Iron Monuments placed for Lametti Addition No. 3