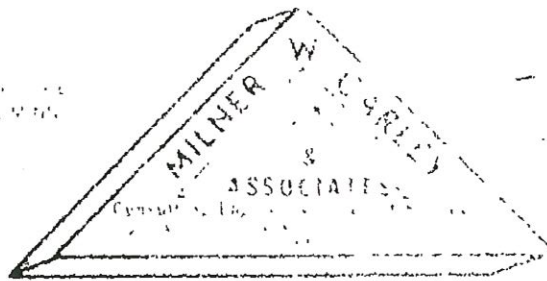


MINNESOTA
STATE BOARD OF
LAND SURVEYORS



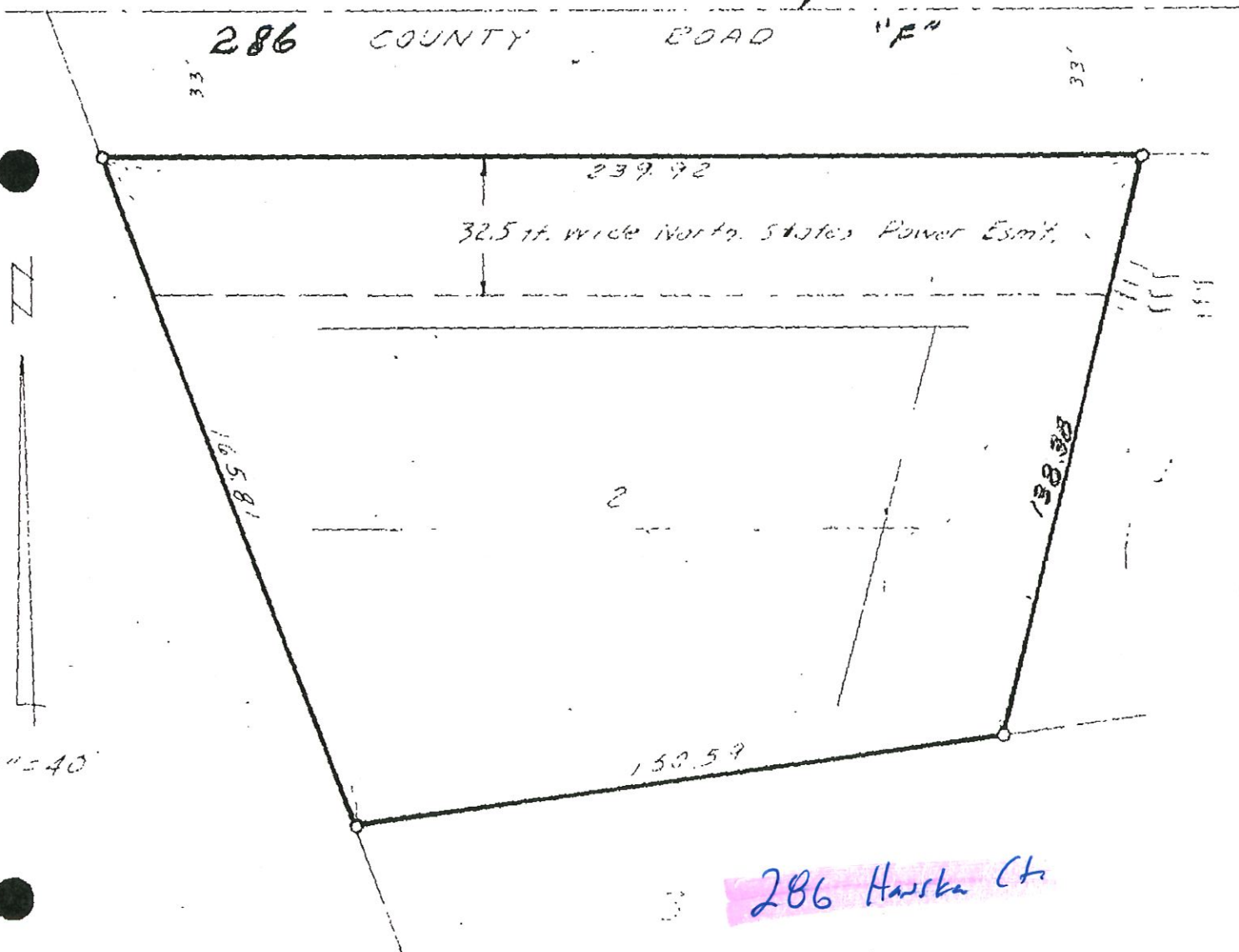
314 DAKOTA ST. N.E. - SUITE 111

I hereby certify that this Certificate of Survey, Location, Easement, Ejecta or Specification was prepared by me or under my direct supervision and that I am a duly Registered Land Surveyor Professional Engineer under the laws of the State of Minnesota.

Ronald F. Meyer

Reg. No. 9051 Date March 16, 1973

N. line Sec. 25, T. 30N, R. 23W



Lot 2, Block 3, SHOREVIEW ESTATES, Ramsey County, Minnesota