

FROM THE OFFICE OF

CHARLES O. GEORGI COMPANY

2215 West County Road B

Saint Paul, Minnesota 55113

REGISTERED CIVIL ENGINEER AND LAND SURVEYOR

Certificate of Survey

I Hereby Certify that this plat shows a survey made by me of the property described on this plat, and that the corners are correctly placed as shown, and that all locations have been correctly shown.

Surveyed For.....*Steve Aman*.....

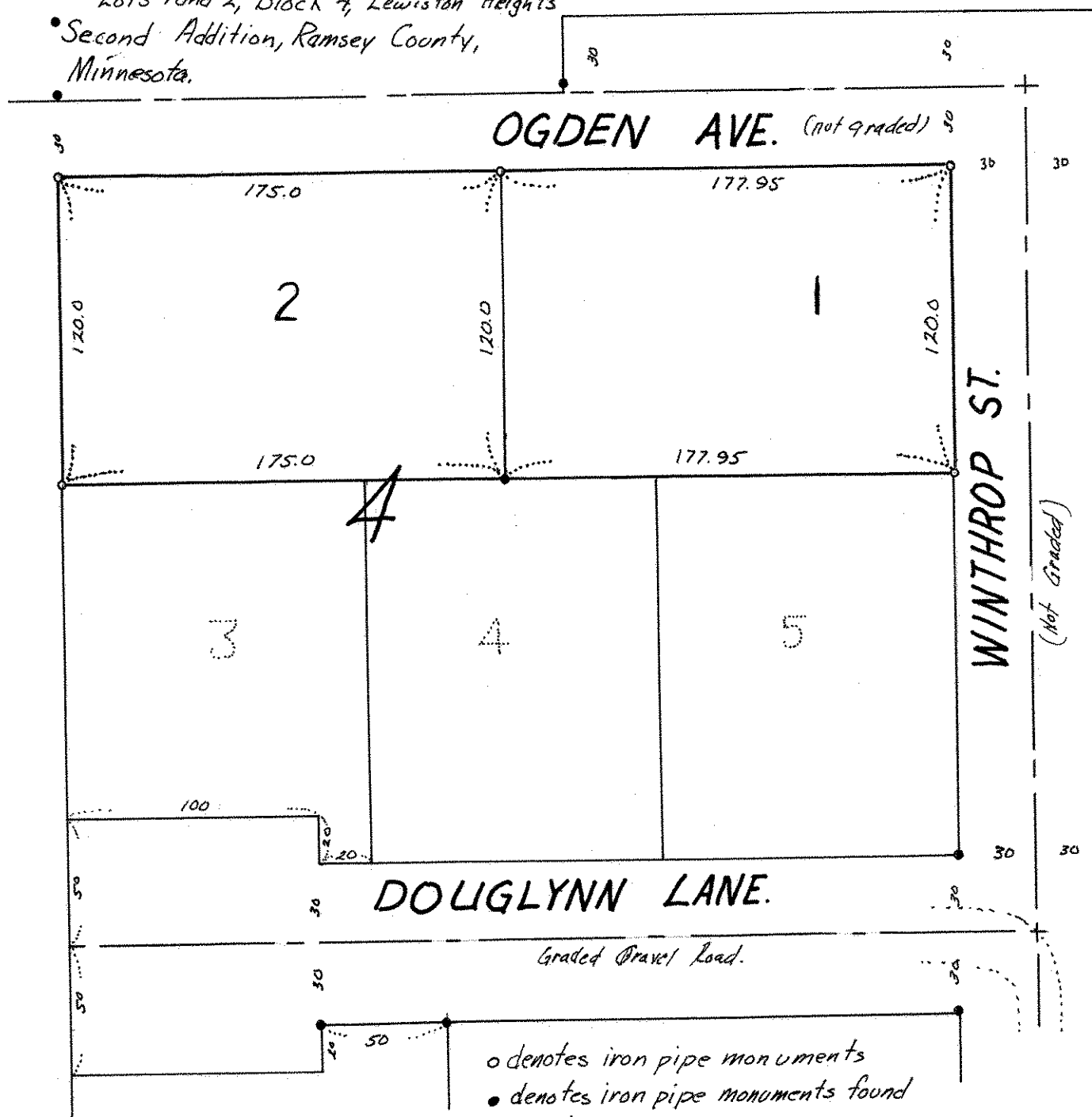
Date.....*July 1973*.....

Scale.....*1"=60'*.....

By.....*Charles O. Georgi*.....
REGISTERED LAND SURVEYOR

Description:

- Lots land 2, Block 4, Lewiston Heights
- Second Addition, Ramsey County, Minnesota.



Survey in accord with plat of record.