


FROM THE OFFICE OF

CHARLES O. GEORGI COMPANY

2215 West County Road B

Saint Paul, Minnesota 55113

REGISTERED CIVIL ENGINEER AND LAND SURVEYOR

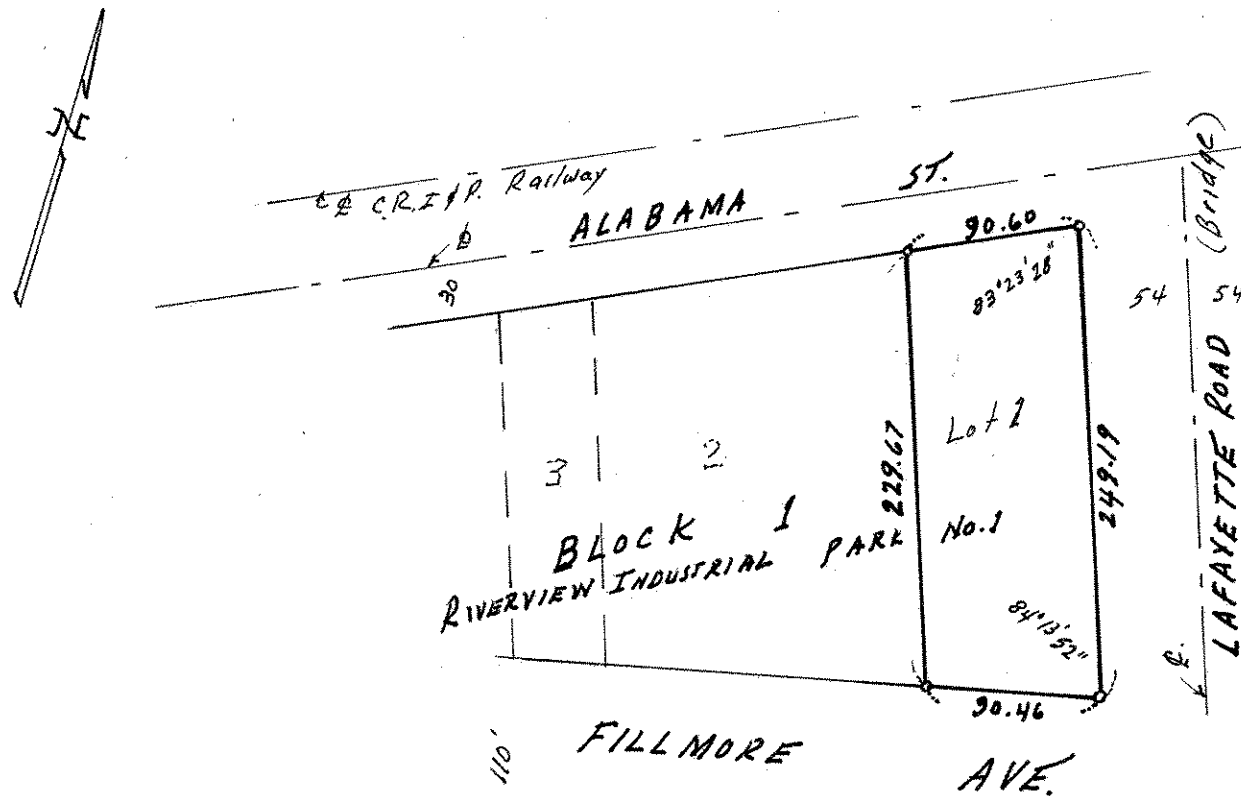


Certificate of Survey

I Hereby Certify that this plat shows a survey made by me of the property described on this plat, and that the corners are correctly placed as shown, and that all locations have been correctly shown.

Surveyed For Part AuthorityDate July 1973Scale 1" = 100'By Charles O. Georgi
REGISTERED LAND SURVEYOR**Description:**

Lot 1, Block 1,
Riverview Industrial Park
according to the plat on file and of record in the office
of Register of Deed in and for Ramsey County, Minn
contains 21,549 Sq. Ft.; m.l.



o Denotes Iron Monument.