

# CHARLES O. GEORGI COMPANY

2215 West County Road B

Saint Paul, Minnesota

MINNESOTA REGISTERED LAND SURVEYOR



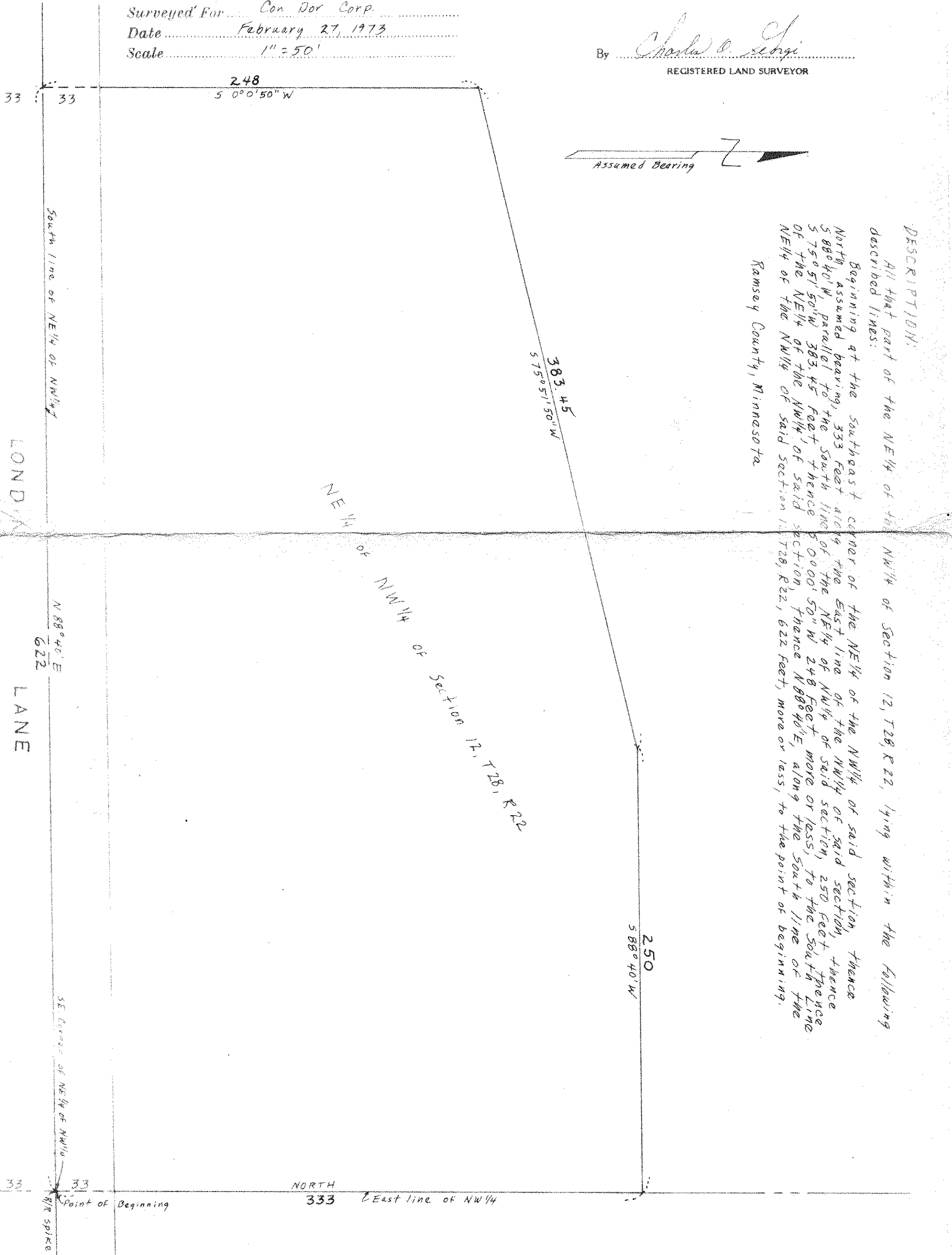
## Certificate of Survey

I Hereby Certify that this plat shows a survey made by me of the property described on this plat, and that the corners are correctly placed as shown, and that all locations, encroachments, etc., have been correctly shown.

No corners placed

Surveyed For Con Dor Corp.  
Date February 27, 1973  
Scale 1" = 50'

By Charles O. Georgi  
REGISTERED LAND SURVEYOR



DESCRIPTION:  
All that part of the NE 1/4 of the NW 1/4 of Section 12, T28, R22, lying within the following described lines:

Beginning at the southeast corner of the NE 1/4 of the NW 1/4 of said section, thence North, assumed bearing, 333 feet along the East line of the NW 1/4 of said section, thence S 88° 40' W, parallel to the South line of the NE 1/4 of NW 1/4 of said section, 250 feet, thence S 75° 0' 51" 50" W, 383.45 feet, thence S 0° 0' 50" W, 248 feet, more or less, to the South line of the NE 1/4 of the NW 1/4 of said section, thence N 88° 40' E, along the South line of the NE 1/4 of the NW 1/4 of said section 12, T28, R22, 622 feet, more or less, to the point of beginning.

NE 1/4 of NW 1/4 of Section 12, T28, R22

South line of NE 1/4 of NW 1/4

LONDON

LANE

N 88° 40' E  
622

SE corner of NE 1/4 of NW 1/4  
R/R spike

NORTH  
333 East line of NW 1/4