

FROM THE OFFICE OF

CHARLES O. GEORGI COMPANY

2215 West County Road B

Saint Paul, Minnesota 55113

REGISTERED CIVIL ENGINEER AND LAND SURVEYOR

Certificate of Survey

I Hereby Certify that this plat shows a survey made by me of the property described on this plat, and that the corners are correctly placed as shown, and that all locations have been correctly shown. See Notes below

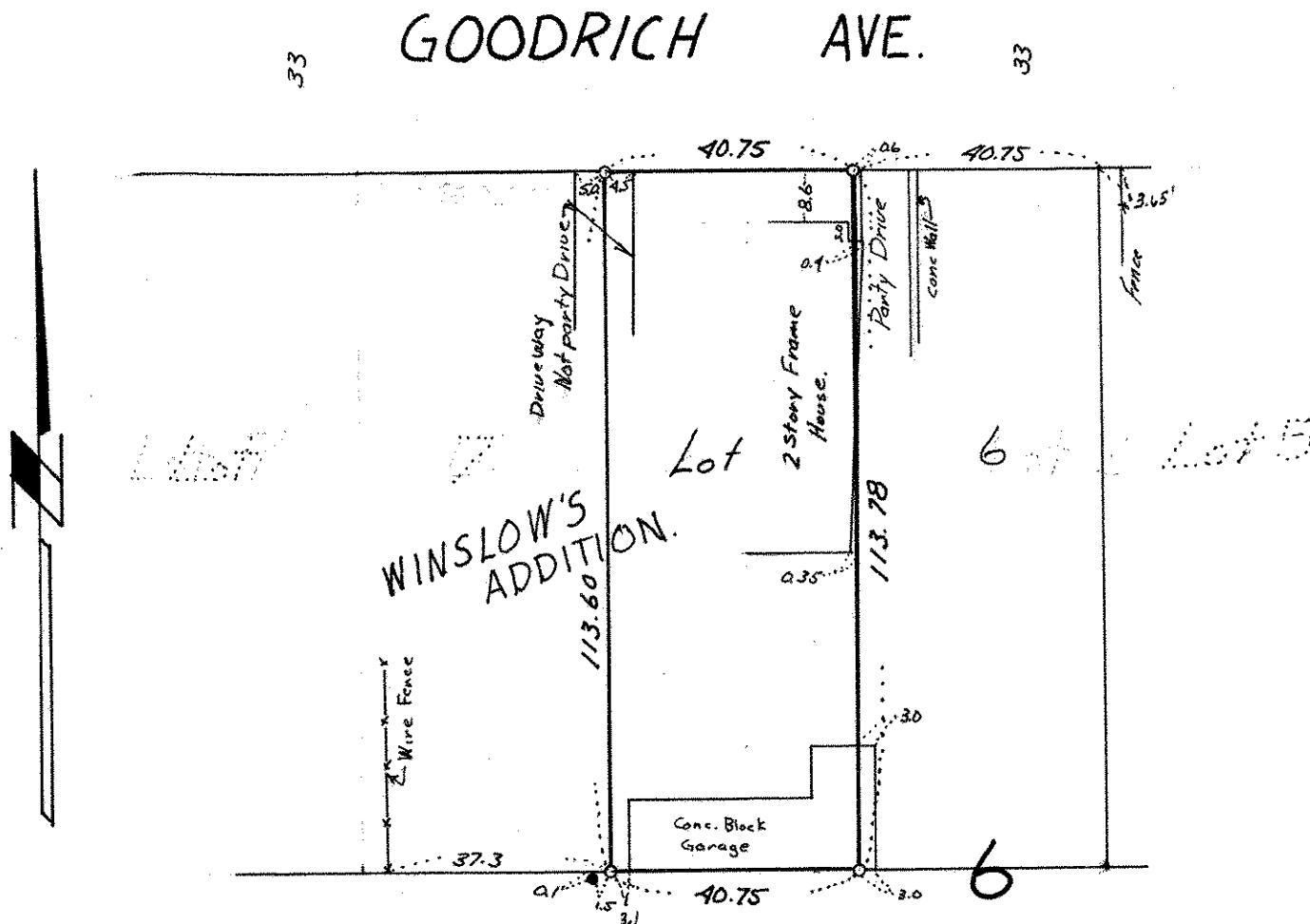
Project No. Minn. A-1-7

Parcel No. 41-C

Area 4,633 sq.ft. m.o.l.

Description:

West 1/2 of Lot 6, Block 6, Winslow's Addition
Ramsey County, Minnesota.

Surveyed For Housing AuthorityDate May 1973Scale 1"=30'By Charles O. Georgi
REGISTERED LAND SURVEYOR

o denotes iron pipe monument
 • denotes iron pipe monument found in place.
 *(Refer to Survey of entire Block 6 of September, 1971. Lines of occupancy indicate record measurements were used from existing monument at N.E. corner of Block 6.)

Surveyors Note:

there is an excess in the block of 7.3 feet along Goodrich Ave. and an excess of 5.4 along Banfil St.

This survey was made in accordance with the legal opinion of the Housing Authority attorney wherein the smaller end lots in the block are treated as odd lots and each are given 1/2 of the excess