

N.E. 11, 28, 23

FROM THE OFFICE OF

# CHARLES O. GEORGI COMPANY

2215 West County Road B

Saint Paul, Minnesota 55113

REGISTERED CIVIL ENGINEER AND LAND SURVEYOR

## Certificate of Survey

I Hereby Certify that this plat shows a survey made by me of the property described on this plat, and that the corners are correctly placed as shown, and that all locations have been correctly shown.

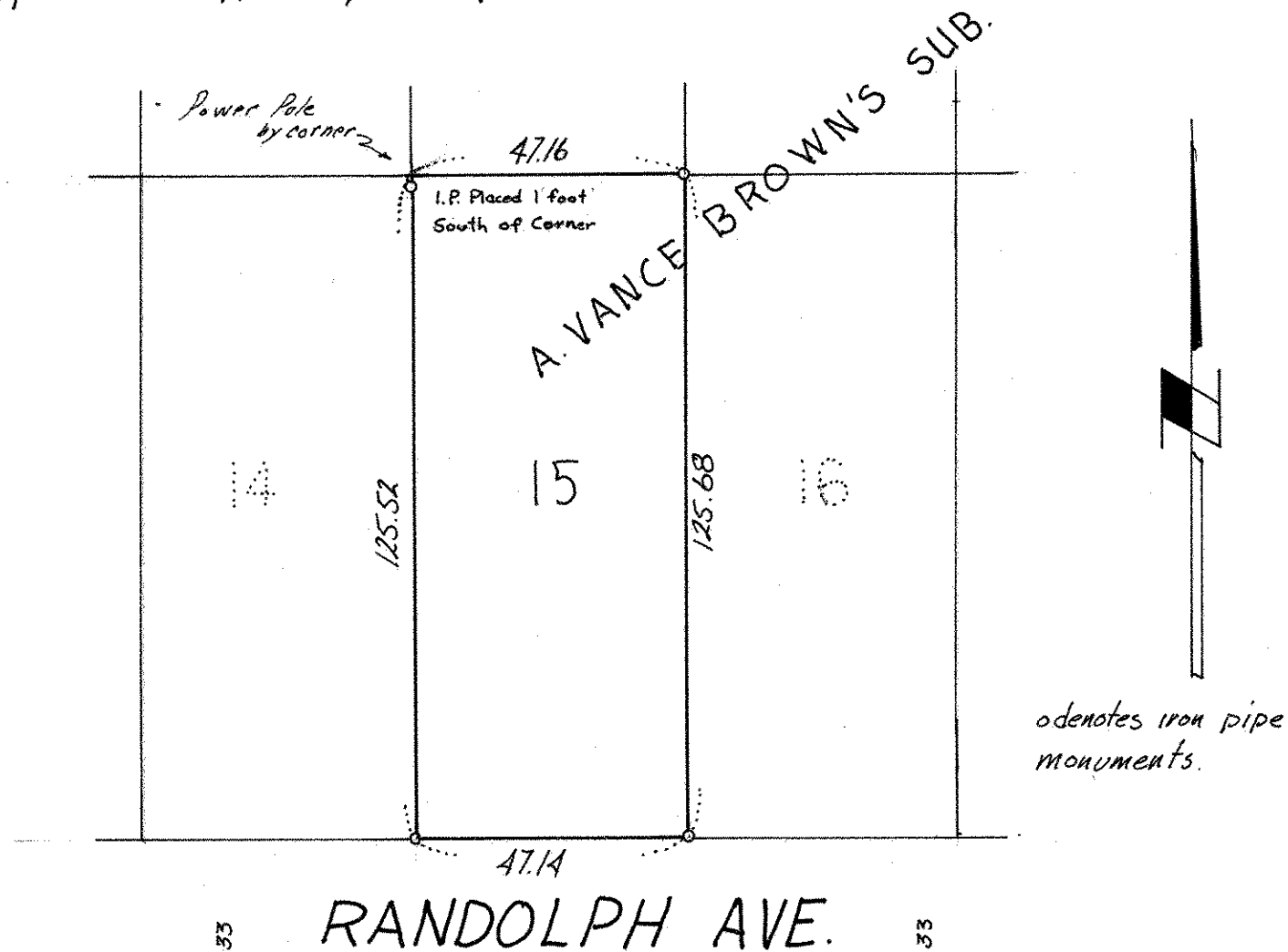
Project No Minn. A-1-7  
Parcel No. 157-A  
Area. 5,922 sqft. m.o.l.

Surveyed For Housing Authority  
Date April 1973  
Scale 1" = 30'

By Charles O. Georgi  
REGISTERED LAND SURVEYOR

**Description:**

Lot 15, Block 32, A Vance Brown's Subdivision  
of Stinson, Brown and Ramsey's addition to the  
City of St. Paul, Ramsey County, Minnesota.



↳ South line of NE 1/4 of Section 11, T28, R23