

SW 12823

FROM THE OFFICE OF

CHARLES O. GEORGI COMPANY

2215 West County Road B

Saint Paul, Minnesota 55113

REGISTERED CIVIL ENGINEER AND LAND SURVEYOR

Certificate of Survey

I Hereby Certify that this plat shows a survey made by me of the property described on this plat, and that the corners are correctly placed as shown, and that all locations have been correctly shown.

Project No. Minn A-1-7
Parcel No. 61-B
Area 6,255 sqft. m.o.l.

Surveyed For Housing Authority

Date October 1973

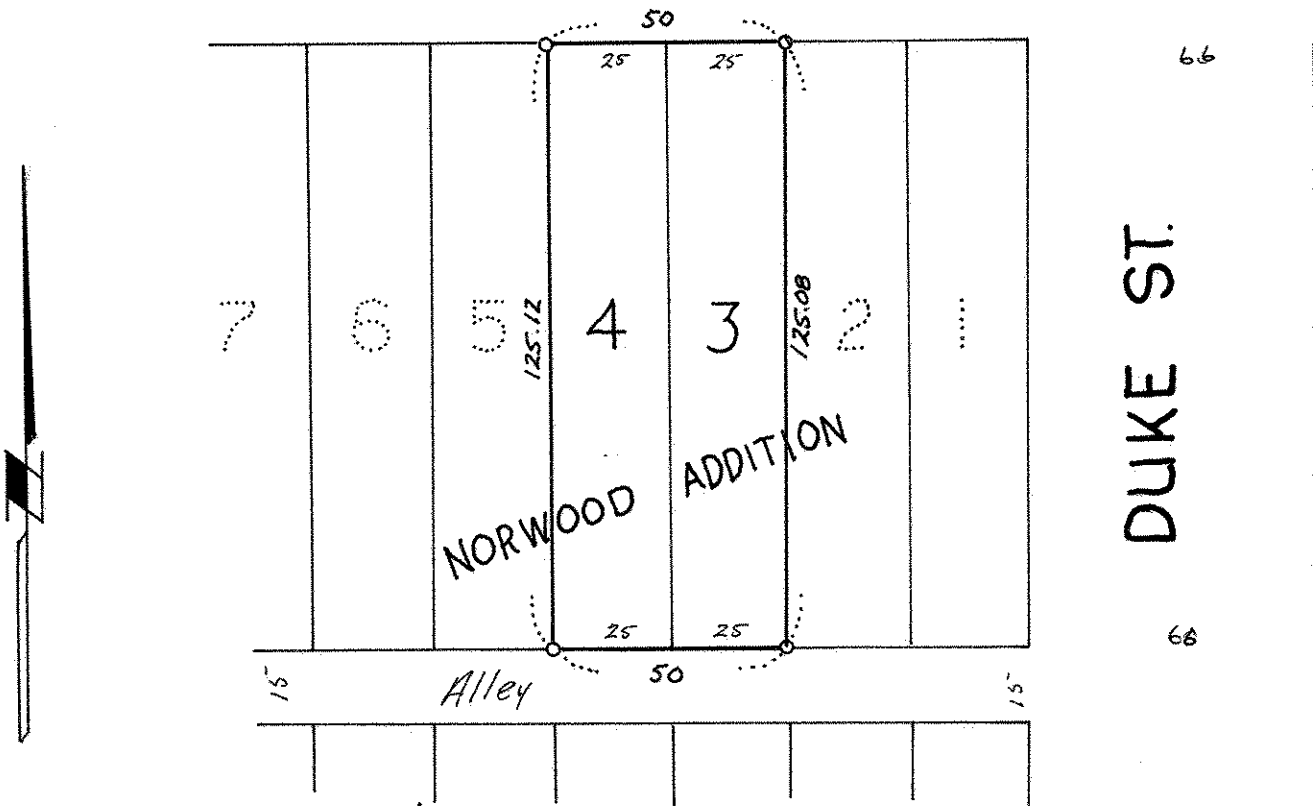
Scale 1" = 40'

By Charles O. Georgi
REGISTERED LAND SURVEYOR

Description:

Lots 3 and 4,
Block 7,
Norwood Addition to St. Paul
Ramsey County,
Minnesota.

66 SUPERIOR AVE. 66



o denotes iron pipe monuments