

FROM THE OFFICE OF

CHARLES O. GEORGI COMPANY

2215 West County Road B

Saint Paul, Minnesota

MINNESOTA REGISTERED LAND SURVEYOR

Certificate of Survey

I Hereby Certify that this plat shows a survey made by me of the property described on this plat, and that the corners are correctly placed as shown, and that all locations, encroachments, etc., have been correctly shown.

No corner placed to date

Surveyed For Antler Corp.

Date January 31, 1973

Scale 1" = 100'

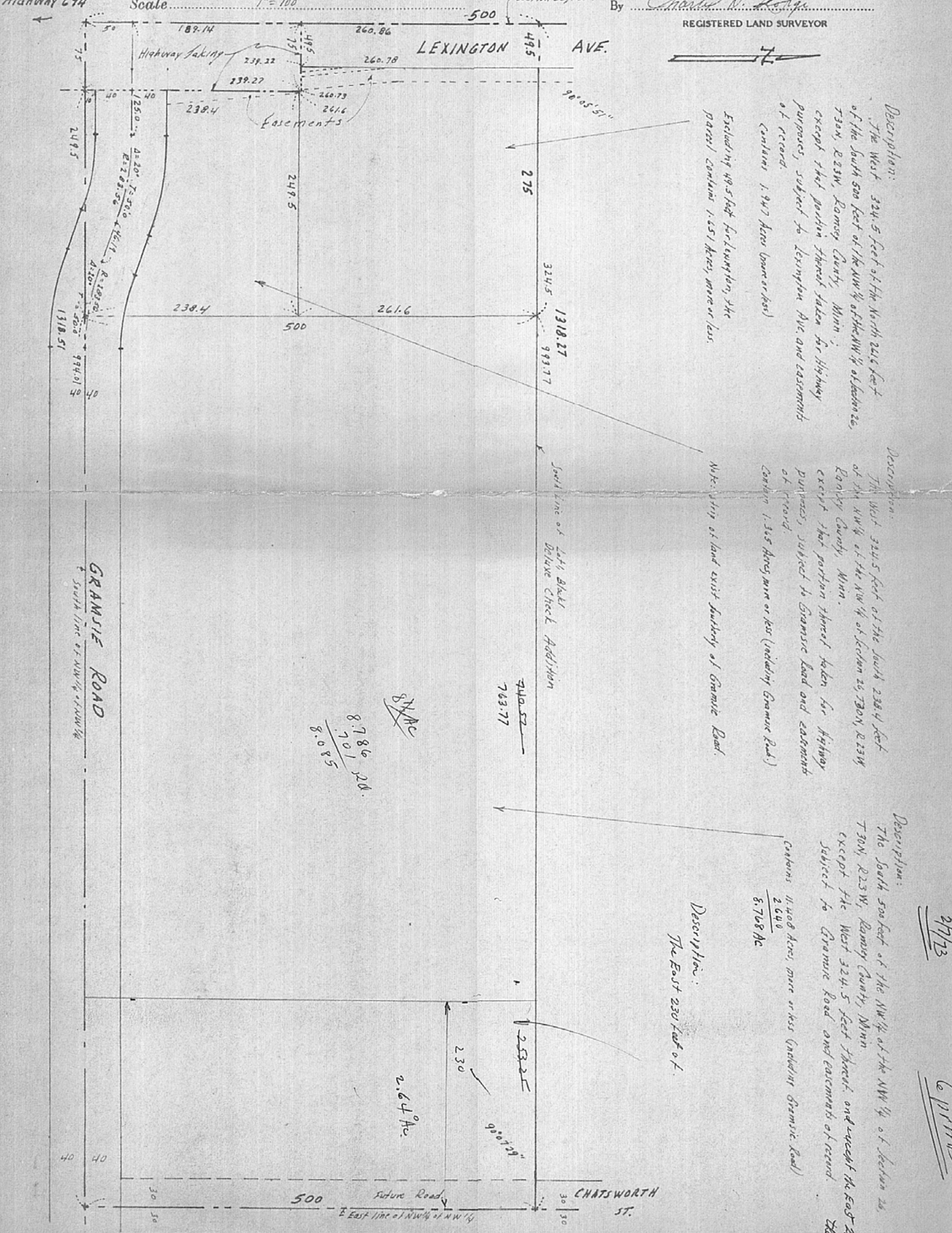
West line of Section 26, T30N, R23W

By

Charles O. Georgi

REGISTERED LAND SURVEYOR

To HIGHWAY 694



Description:
The West 324.5 feet of the North 249.5 feet of the South 500 feet of the NW 1/4 of Section 26, T30N, R23W, Ramsey County, Minn., except that portion thereof taken for Highway purposes, subject to Lexington Ave. and easements of record.
(contains 1.947 Acres more or less)

Excluding 49.5 feet for Lexington, the parcel contains 1.851 Acres, more or less.

Description:
The West 324.5 feet of the South 238.4 feet of the NW 1/4 of the NW 1/4 of Section 26, T30N, R23W, Ramsey County, Minn., except that portion thereof taken for Highway purposes, subject to Granite Road and easements of record.
(contains 1.345 Acres more or less (including Granite Road))

Note: Strip of land exist southerly of Granite Road.

Description:
The South 500 feet of the NW 1/4 of the NW 1/4 of Section 26, T30N, R23W, Ramsey County, Minn., except the West 324.5 feet thereof, and except the East 230 feet subject to Granite Road and easements of record. (they contain 11.468 Acres, more or less (including Granite Road))
2600
8.768 Ac

Description:
The East 230 feet of.

27773
6111745