

FROM THE OFFICE OF

CHARLES O. GEORGI COMPANY

2215 West County Road B

Saint Paul, Minnesota 55113

REGISTERED CIVIL ENGINEER AND LAND SURVEYOR



Certificate of Survey

I Hereby Certify that this plat shows a survey made by me of the property described on this plat, and that the corners are correctly placed as shown, and that all locations have been correctly shown.

Project NO. MINN A-1-7
 Parcel No. 171-C
 Area = 4,840 Sq Ft, More or Less
 Area: 0.11 Acres, More or Less

Surveyed For Housing Authority

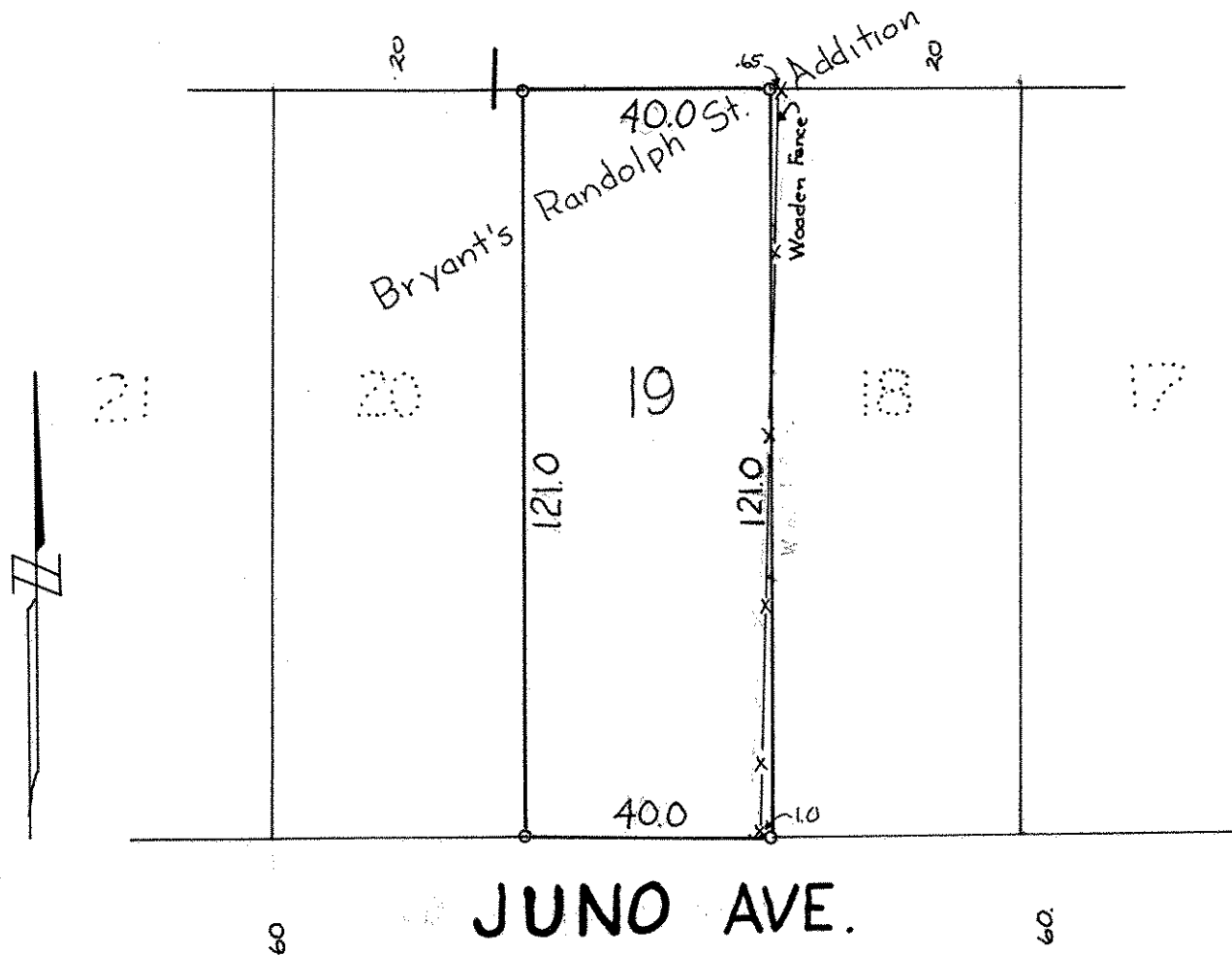
Date December 1972

Scale 1" = 30'

By *Charles O. Georgi*
 REGISTERED LAND SURVEYOR

Description:

Lot 19 of Block I of Bryant's Randolph
 Street Addition to St. Paul, Ramsey County, Minnesota.



o Denotes iron monument.