

FROM THE OFFICE OF

CHARLES O. GEORGI COMPANY

2215 West County Road B

Saint Paul, Minnesota 55113

REGISTERED CIVIL ENGINEER AND LAND SURVEYOR

Certificate of Survey

I Hereby Certify that this plat shows ^{traverse} a survey made by me of the property described on this plat, and that the corners are correctly placed as shown, and that all locations have been correctly shown. *No corners placed.*
4/28/72 *Redise parcel and description.*

Surveyed For *Lilasa Conata*

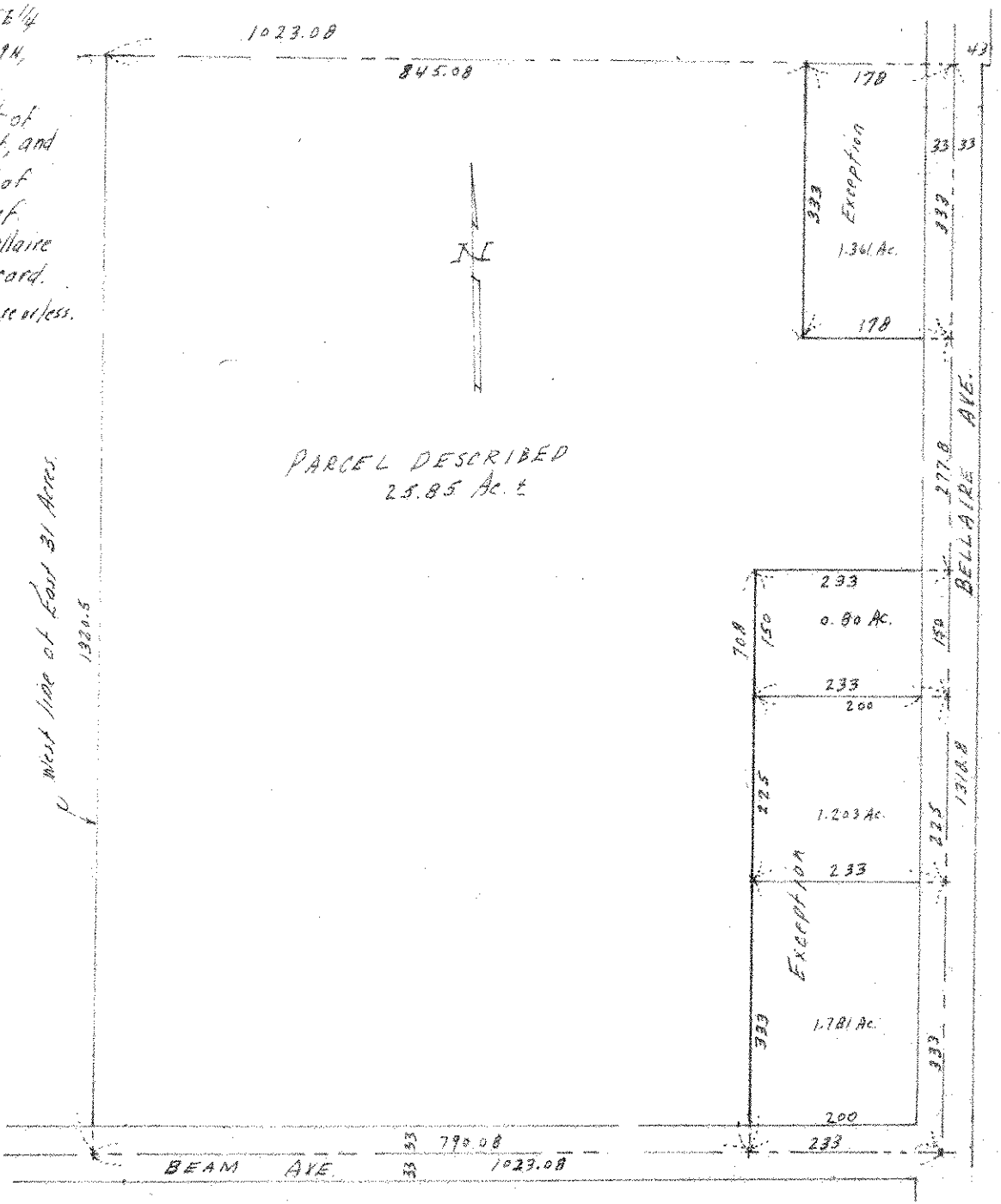
Date *February 1972*

Scale *1" = 200'*

By *Charles O. Georgi*
REGISTERED LAND SURVEYOR

Description:

The East 31 Acres of the SE 1/4 of the NW 1/4 of Section 1, T29N, R22W, Ramsey County, Minn. except the East 233 feet of the South 700 feet thereof, and except the East 178 feet of the North 333 feet thereof.
Subject to Beam Ave, Bellaire Ave, and easements of record.
* Contains 25.85 Acres, more or less.



* distance and areas are approximate as they are taken from old map records.
Final distances and areas are to be determined from actual field survey.