

FROM THE OFFICE OF NE 18 29 22

# CHARLES O. GEORGI COMPANY

2215 West County Road B

Saint Paul, Minnesota 55113

REGISTERED CIVIL ENGINEER AND LAND SURVEYOR

## Certificate of Survey

I Hereby Certify that this plat shows a survey made by me of the property described on this plat, and that the corners are correctly placed as shown, and that all locations have been correctly shown.

Surveyed For Alex Heaver

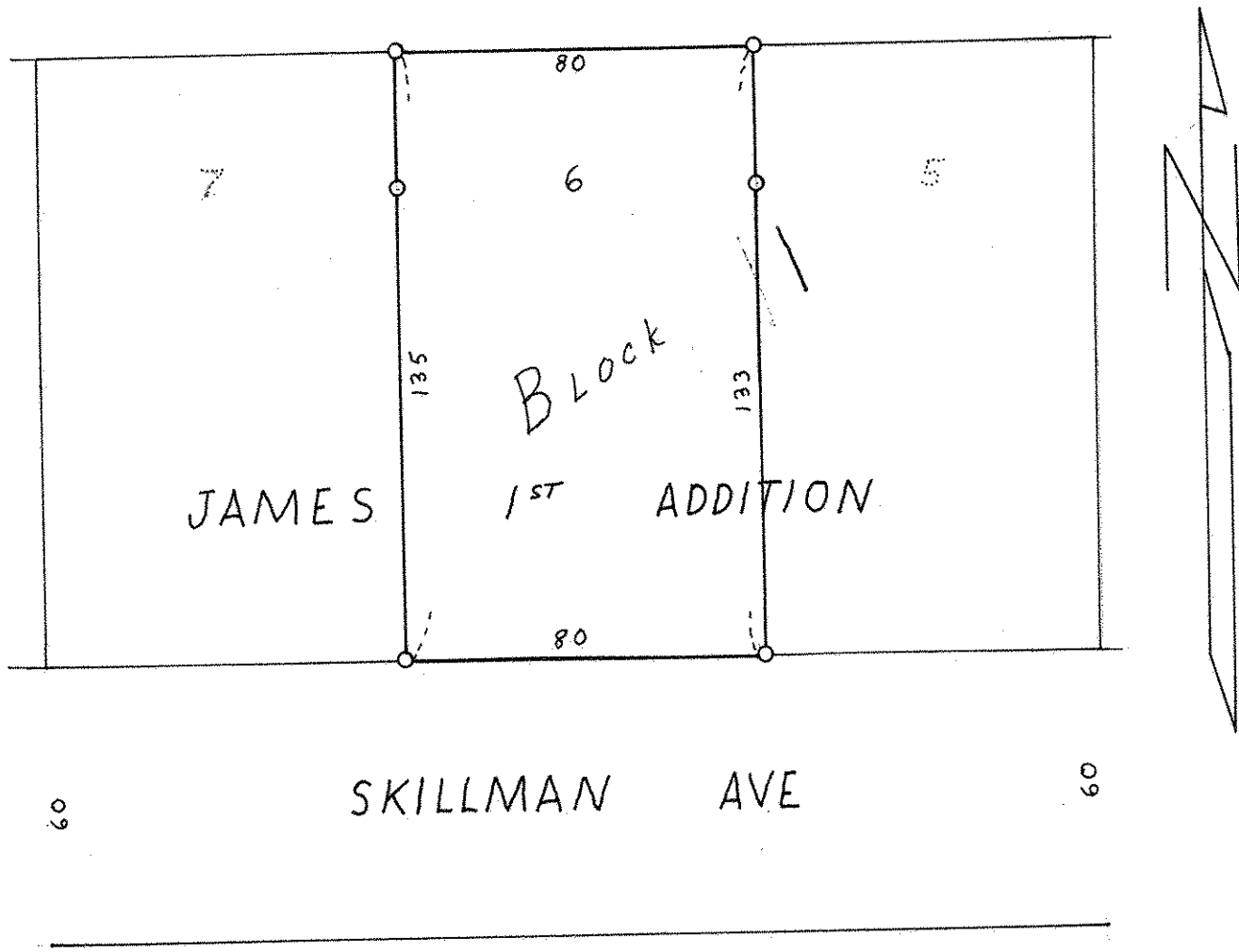
Date July 1972

Scale 1" = 40'

By Charles O. Georgi  
REGISTERED LAND SURVEYOR

Description: 141 E Skillman Ave

Lot 6, Block 1, James 1st Addition, Subject to easments of record  
Ramsey County, Minnesota



○ Denotes Iron Monument