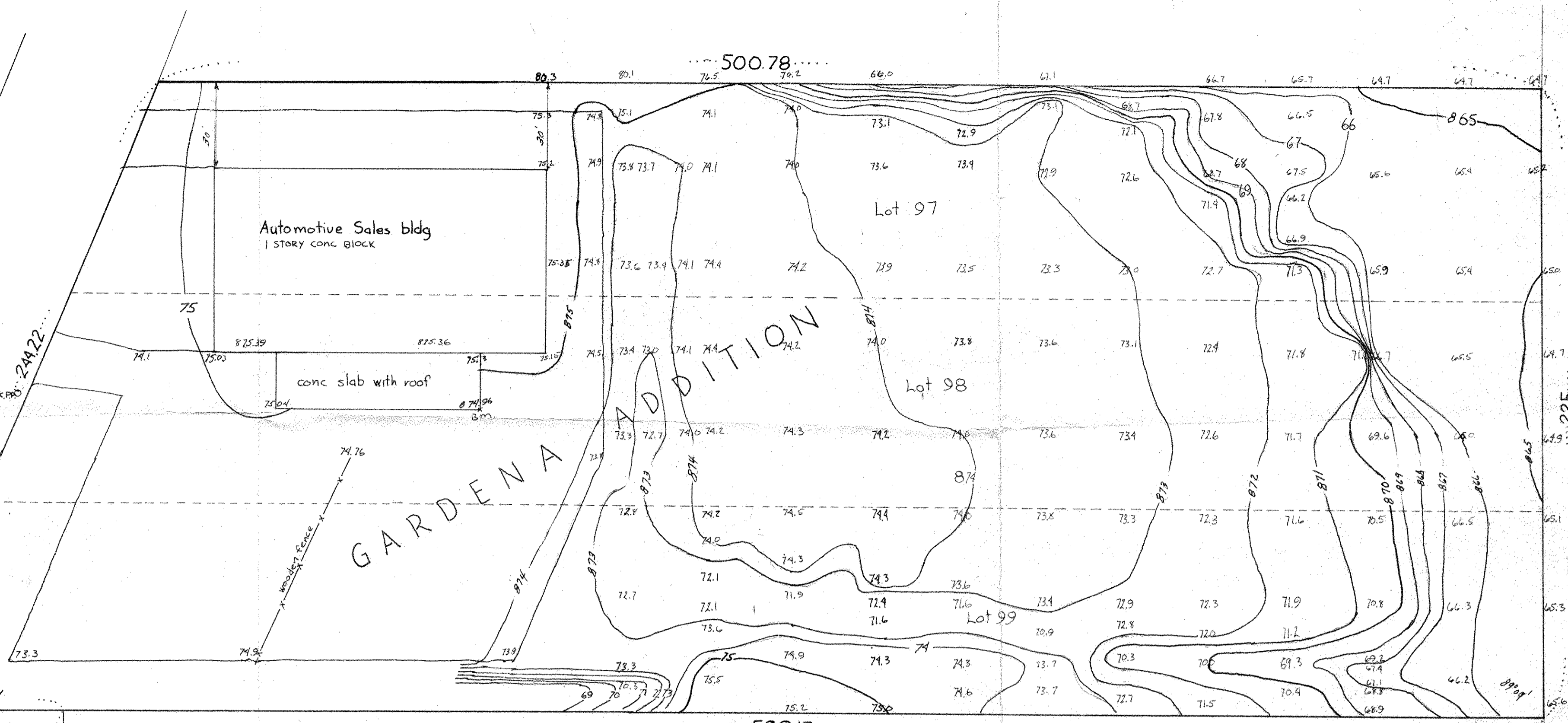


HIGHWAY No. 61

Franchise road

B.M. SPK. PO. 872.18



ENGLISH ST. (Not Graded)

East Line of NE 1/4 Section 4, T29N, R22W

KOHLMAN LAKEVIEW ADDITION.

All elevations are Village and U.S.G.S. Datum.  
 74.2 Denotes an elev. of 874.2  
 B.M. Spk.in power pole = 872.18  
 B.M. S.E. corner of conc. slab = 874.96 as shown.

Lots 97, 98, 99 of Gardena Addition to Ramsey County, Minnesota. Subject to Hwy 61 Except Kohlman Addition all that part of the NE 1/4 of SE 1/4 of SE 1/4 of Section 4, T29N, R22W, which lies East of the Easterly R/W line of T.H. 61 and North of a line described as follows: beginning at a point distant 531.75 feet West and 122 feet South of the N.E. corner of the above described fraction of Section 4, thence running Northwesterly at an angle of approx. 66°28' from said point 107 feet more or less to a point on the Easterly R/W line of said Hwy 61, which said point is 90 feet Southwesterly from the point of intersection of the said Easterly R/W line with the North line of said N.E. 1/4 of SE 1/4 of S.E. 1/4 of Section 4, T29N, R22W. lying in Ramsey County, Minnesota. Subject to easements of Record.

I hereby certify that all locations and elevations as shown hereon are true and correct in accord with boundary shown.

*Charles E. Lohy*  
 REGISTERED LAND SURVEYOR

**Topography Map**  
**Metropolitan Porsche Audi**  
 Highway No. 61  
 St. Paul, Minnesota  
 Scale 1" = 30'  
 C.O. Georgi Civil Engineer  
 and Land Surveyor,  
 3092 N. Lexington  
 ST Paul Minnesota

October 27, 1972