

SW 12 29 22

FROM THE OFFICE OF

# CHARLES O. GEORGI COMPANY

2215 West County Road B

Saint Paul, Minnesota 55113

REGISTERED CIVIL ENGINEER AND LAND SURVEYOR

## Certificate of Survey

I Hereby Certify that this plat shows a survey made by me of the property described on this plat, and that the corners are correctly placed as shown, and that all locations have been correctly shown.

Surveyed For <sup>Choban</sup> Choban Realty.

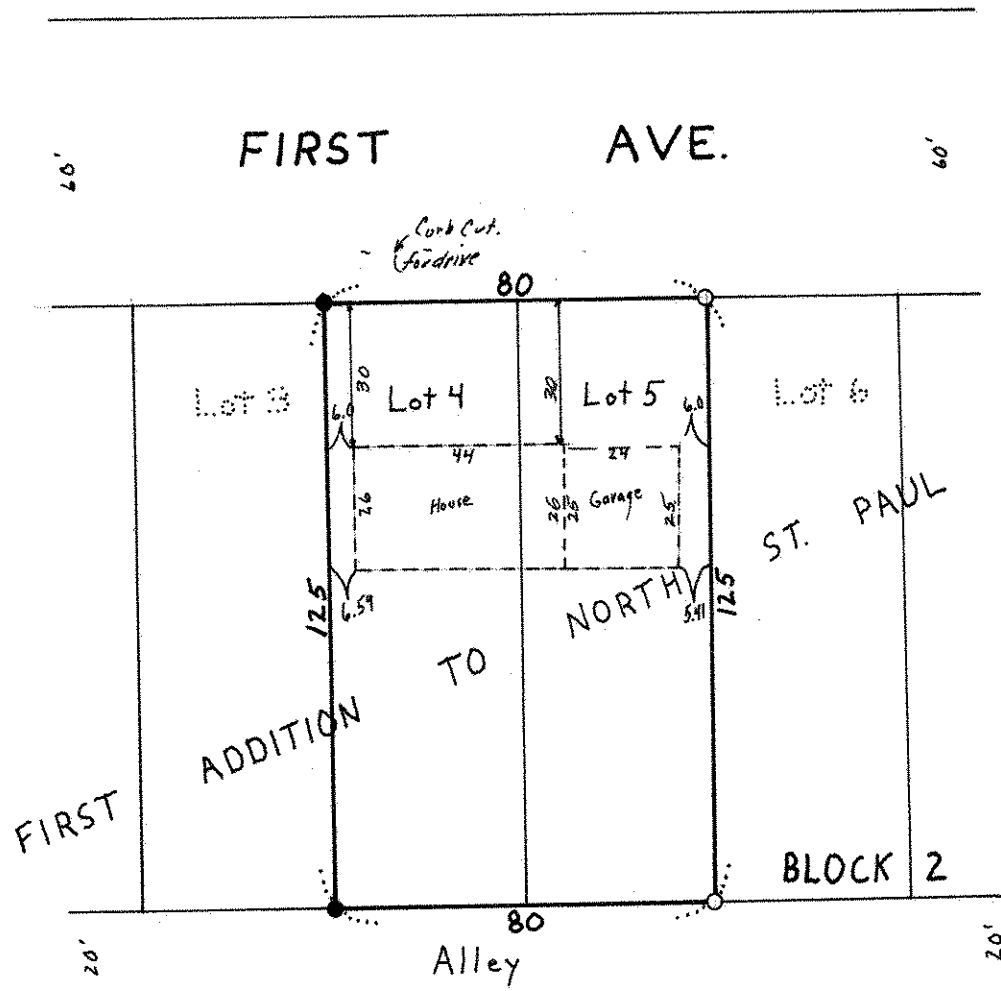
Date June 1972

Scale 1" = 40'

By *Charles O. Georgi*  
REGISTERED LAND SURVEYOR

**Description:**

Lots 4 and 5, Block 2,  
First Addition to North St. Paul,  
Ramsey County, Minnesota.



- Denotes Iron Pipe Monument
- Denotes Iron Pipe Monument Found In Place