

FROM THE OFFICE OF

CHARLES O. GEORGI COMPANY

2215 West County Road B

Saint Paul, Minnesota 55113

REGISTERED CIVIL ENGINEER AND LAND SURVEYOR



**Certificate
of Survey**

I Hereby Certify that this plat shows a survey made by me of the property described on this plat, and that the corners are correctly placed as shown, and that all locations have been correctly shown.

Surveyed For August Construction

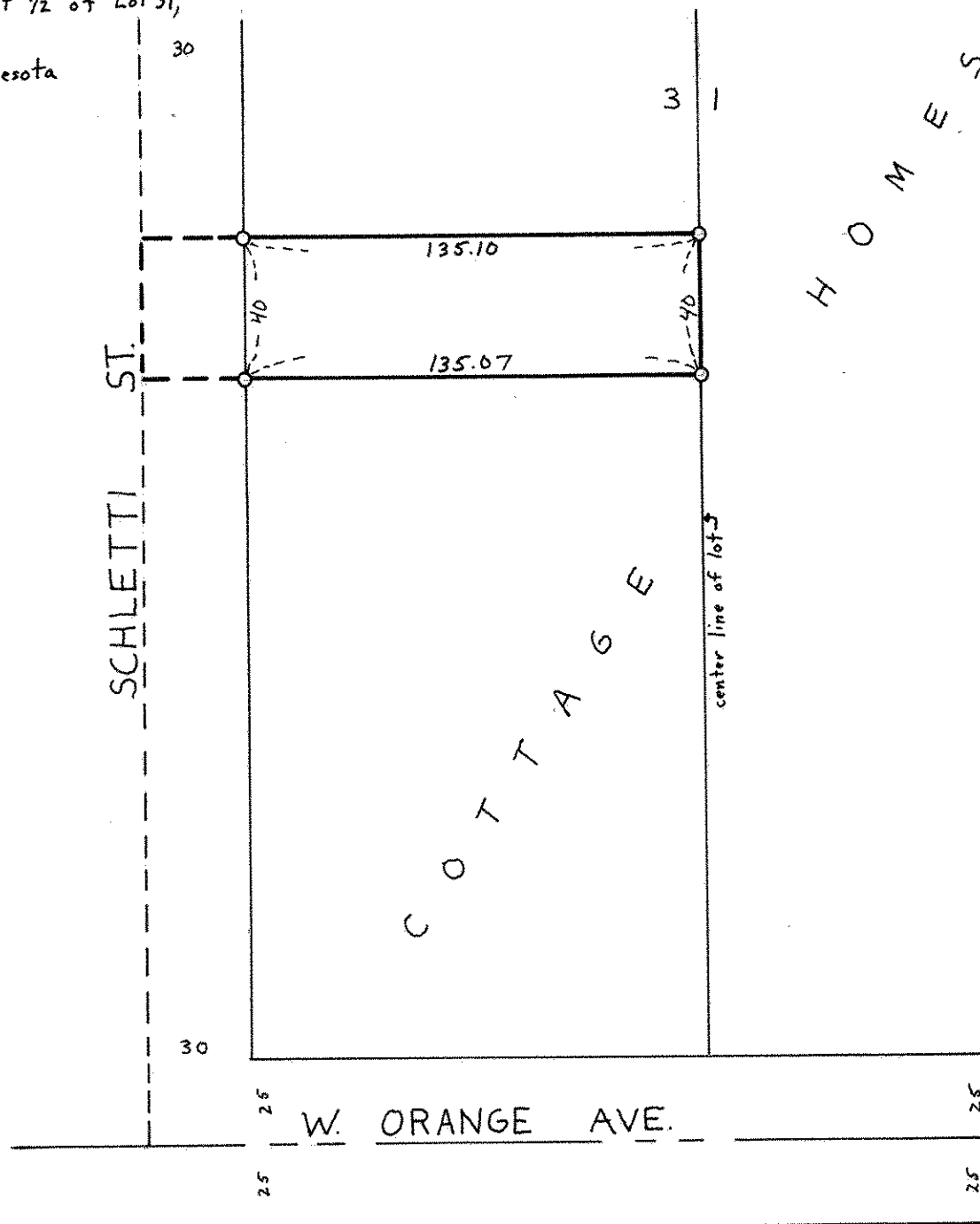
Date April, 1972

Scale 1" = 50'

By Charles O. Georgi
REGISTERED LAND SURVEYOR

Description:

Except the West 30 feet thereof,
The North 40 feet of the South
240 feet of the West 1/2 of Lot 31,
Cottage Homes.
Ramsey County, Minnesota



○ Denotes Iron Pipe Monument