

FROM THE OFFICE OF

CHARLES O. GEORGI COMPANY

2215 West County Road B

Saint Paul, Minnesota 55113

REGISTERED CIVIL ENGINEER AND LAND SURVEYOR

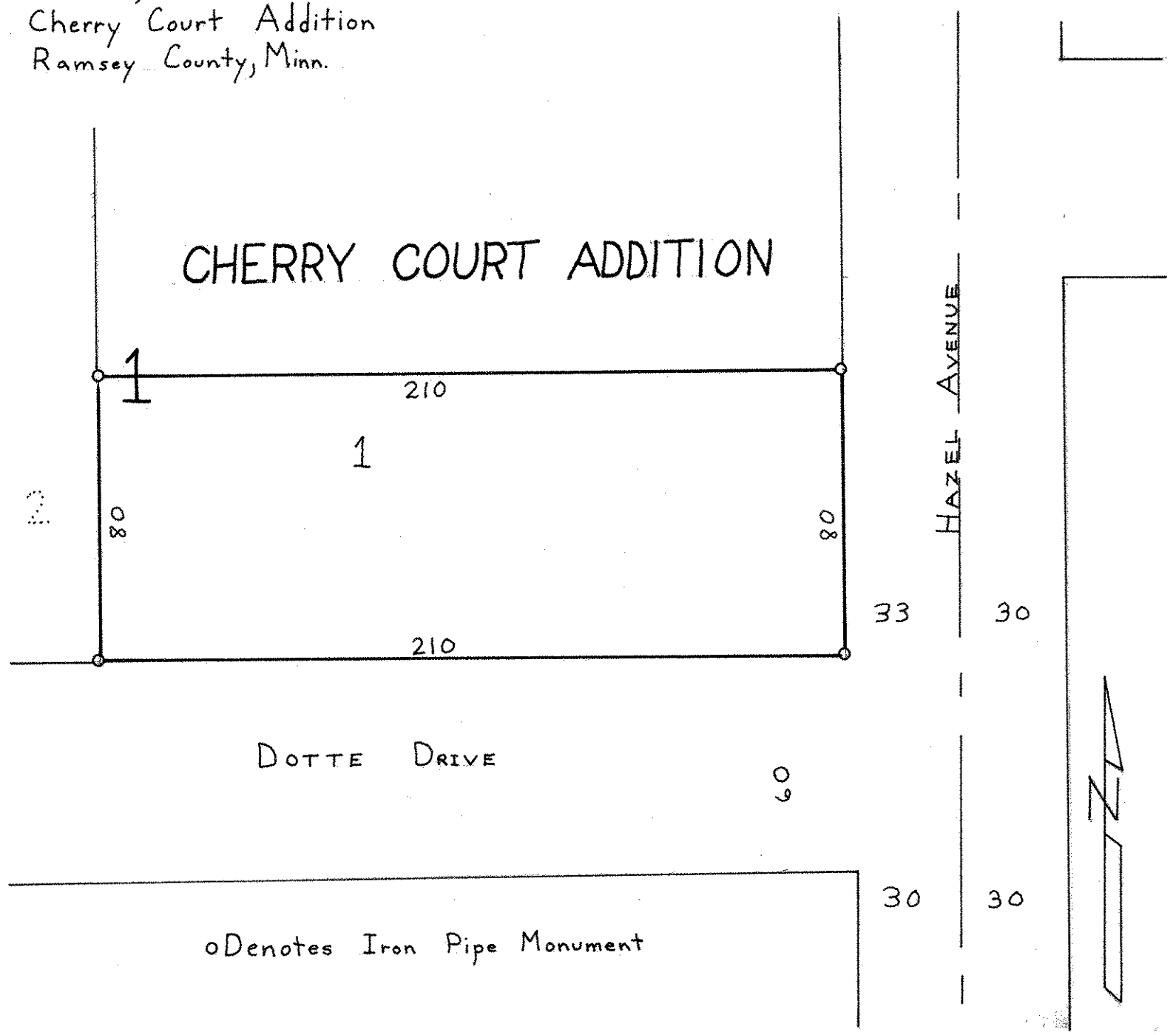
Certificate of Survey

I Hereby Certify that this plat shows a survey made by me of the property described on this plat, and that the corners are correctly placed as shown, and that all locations have been correctly shown.

Surveyed For Harold Sundquist
Date Feb 1972
Scale 1" = 40'

By Charles O. Georgi
REGISTERED LAND SURVEYOR

Description:
Lot 1, Block 1
Cherry Court Addition
Ramsey County, Minn.



o Denotes Iron Pipe Monument