

FROM THE OFFICE OF

CHARLES O. GEORGI COMPANY

2215 West County Road B

Saint Paul, Minnesota 55113

REGISTERED CIVIL ENGINEER AND LAND SURVEYOR

Certificate of Survey

I Hereby Certify that this plat shows a survey made by me of the property described on this plat, and that the corners are correctly placed as shown, and that all locations have been correctly shown.

Surveyed For Albert Savard

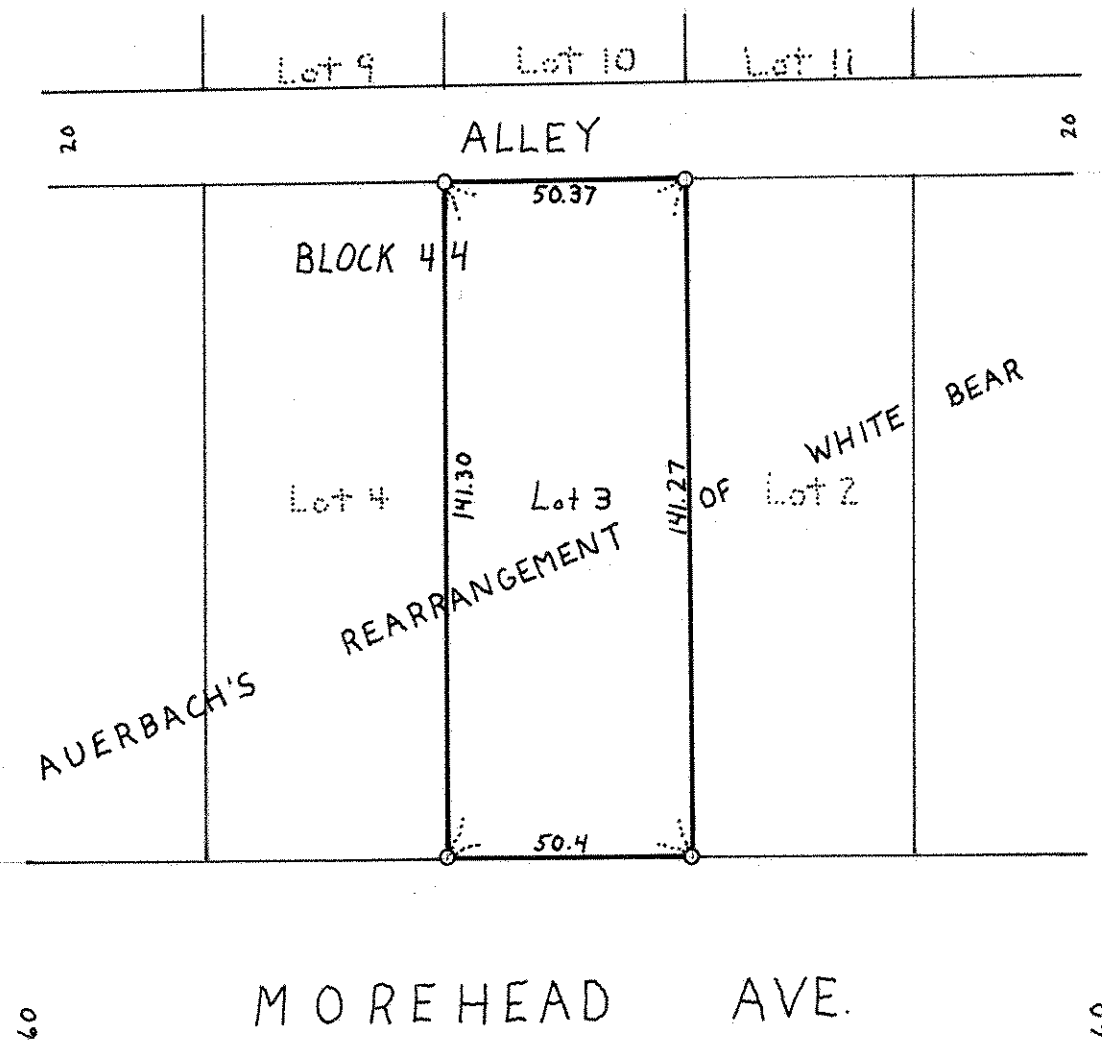
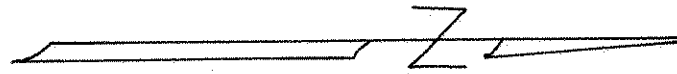
Date May 1972

Scale 1" = 40'

By Charles O. Georgi
REGISTERED LAND SURVEYOR

Description:

Lot 3, Block 44,
Auerbach's Rearrangement of White Bear,
Ramsey County, Minnesota



○ Denotes Iron Pipe Monument