

FROM THE OFFICE OF

CHARLES O. GEORGI COMPANY

2215 West County Road B

Saint Paul, Minnesota 55113

REGISTERED CIVIL ENGINEER AND LAND SURVEYOR



Certificate of Survey

I Hereby Certify that this plat shows a survey made by me of the property described on this plat, and that the corners are correctly placed as shown, and that all locations have been correctly shown.

Surveyed For *Jahn Phillips*

Date *May 1972*

Scale *1" = 40'*

By *Charles O. Georgi*
REGISTERED LAND SURVEYOR

Description:

Lot 1,
Hafner Park Plat No.3,
Ramsey County, Minn.
Subject to easements of record



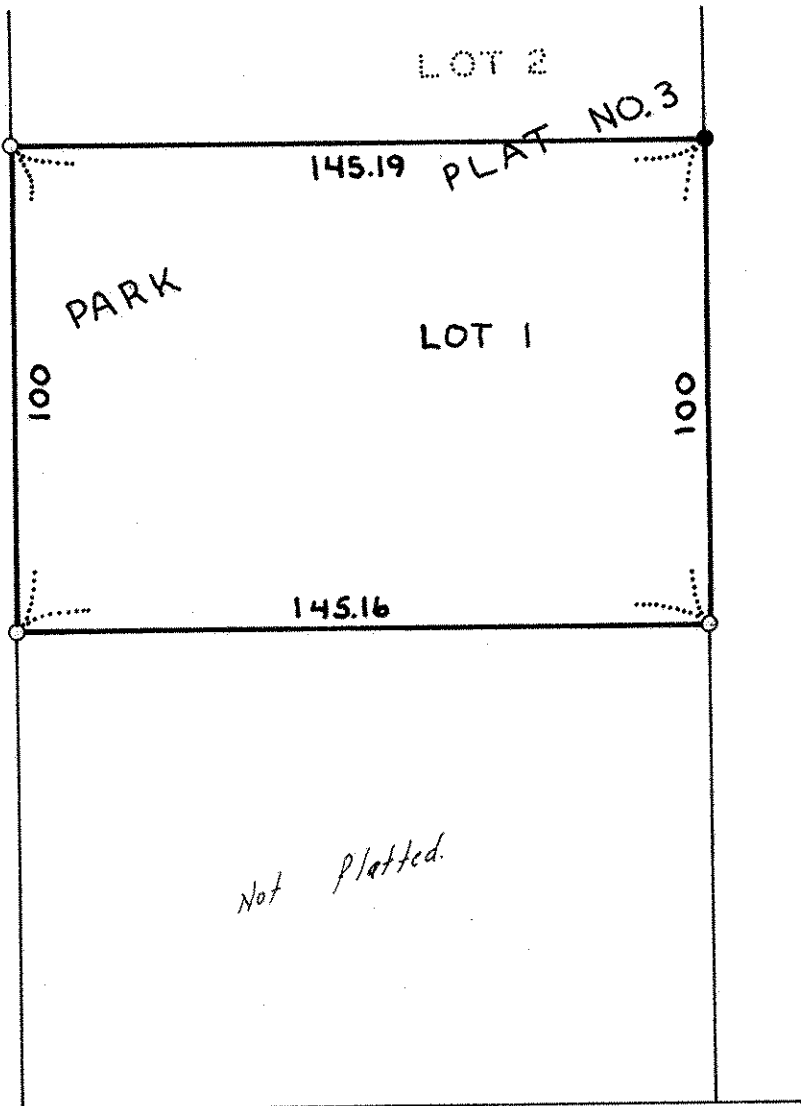
HAFNER

LOT 14

LOT 15

60

COURT



Not Platted.

○ Denotes Iron Pipe Monument

● Denotes Iron Pipe Monument found in place

60 HAFNER

60

COUNTY

ROAD D

South line of Section 35, T30N, R23W