

FROM THE OFFICE OF

# CHARLES O. GEORGI COMPANY

2215 West County Road B

Saint Paul, Minnesota 55113

REGISTERED CIVIL ENGINEER AND LAND SURVEYOR



*I Hereby Certify that this plat shows a survey made by me of the property described on this plat, and that the corners are correctly placed as shown, and that all locations have been correctly shown.*

Surveyed For *Michels Const.*

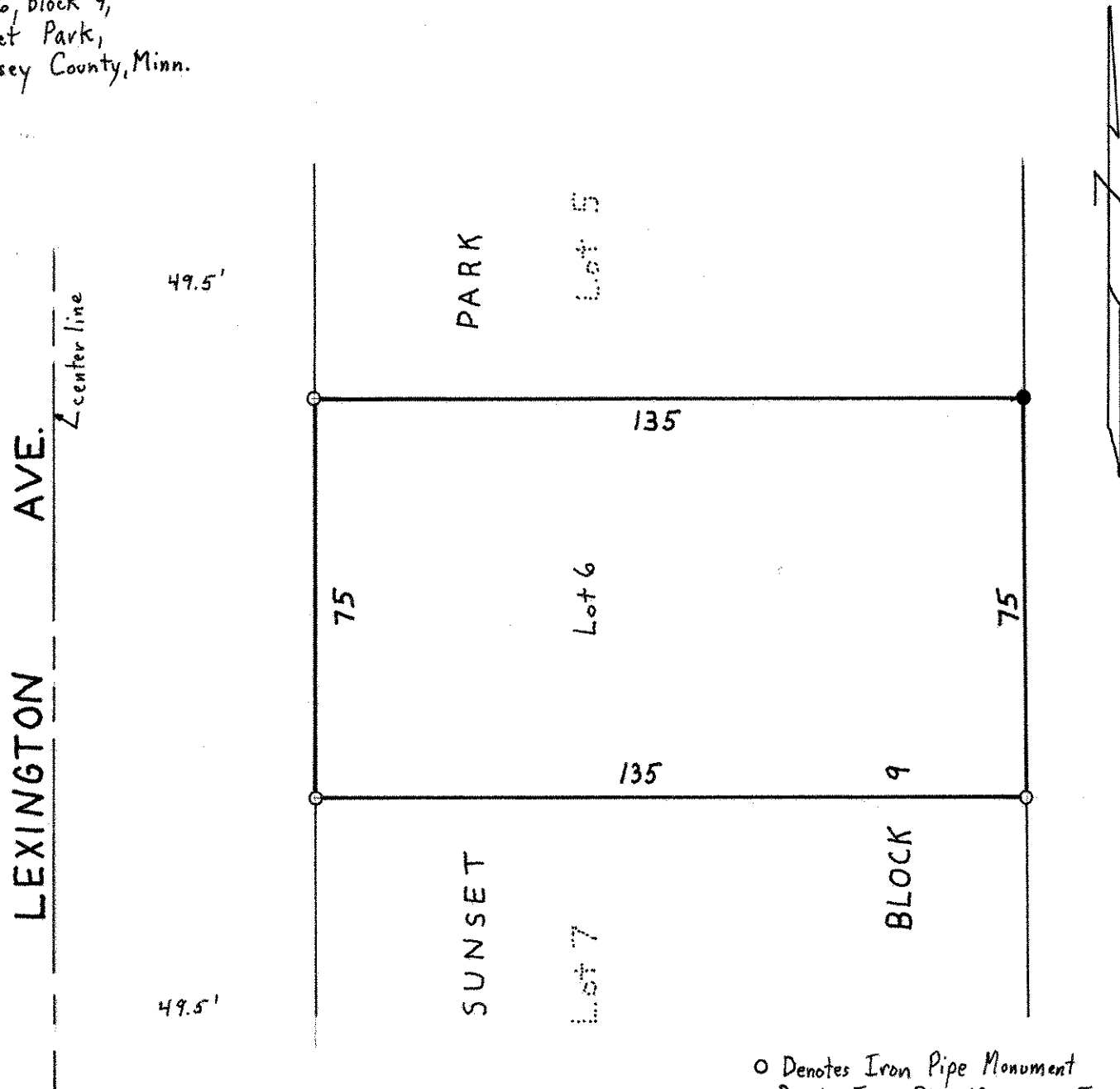
Date *June 1972*

Scale *1" = 30'*

By *Charles O. Georgi*  
REGISTERED LAND SURVEYOR

**Description:**

Lot 6, Block 9,  
Sunset Park,  
Ramsey County, Minn.



○ Denotes Iron Pipe Monument  
○ Denotes Iron Pipe Monument Found In Place