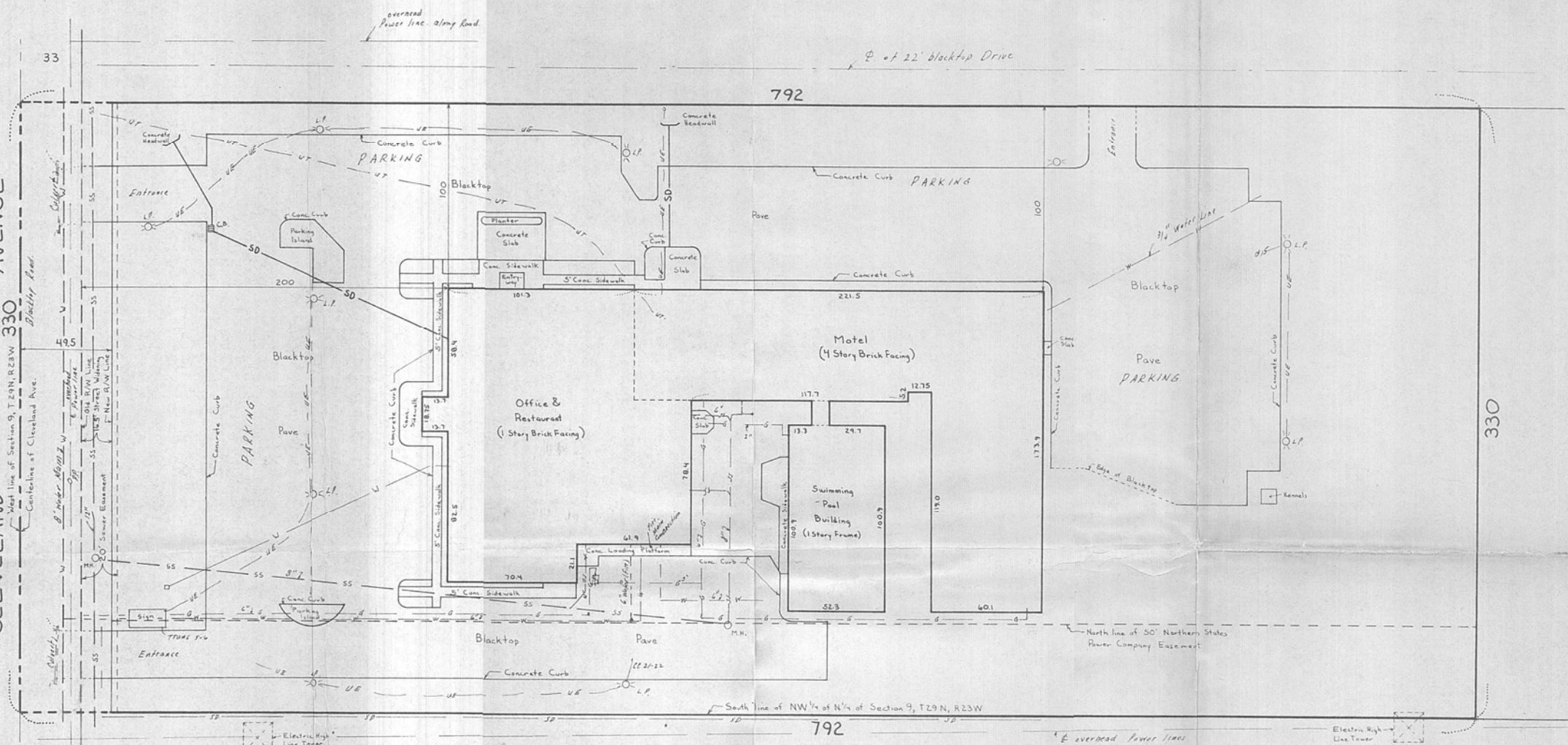


INTERSTATE HIGHWAY 35W

CLEVELAND AVENUE

33

33



Description:

The West 792 feet of the South 330 feet of the NW<sup>1</sup>/<sub>4</sub> of the NW<sup>1</sup>/<sub>4</sub> of Section 9, T29N, R23W, Ramsey County, Minnesota Subject to Cleveland Avenue and easiments of record.

To Massachusetts Mutual Life Insurance Company of Springfield, Massachusetts and Jell Corporation and all parties interested in title to premises surveyed:

This is to certify that an actual location survey was made on the premises shown on this location map, and that this location survey is a correct representation of the premises as determined by said survey. Under ground utility locations are from Architect location records and to accuracy of same. I further certify that there are no visible encroachments either way across any boundary line of the premises

Charles O. Georgi  
Registered Land Surveyor No. 3960  
5/31/72



General Notes:  
Buried Utility locations and sizes in accord with Architects as built drawings and to accuracy of same.

- X.L.P. Light pole.
- O.M.H. Manhole.
- O.C.B. Catch basin
- W- water line
- SS- sanitary sewer
- S.S.- Storm Sewer
- G- Gas Main
- UT- underground Telephone Cable
- UE- underground Electric Cable
- PP- power pole

LOCATION MAP  
HOLIDAY INN

ROSEVILLE, MINN.

SCALE 1"=40'

CHARLES O. GEORGI COMPANY  
Civil Engineering & Land Surveying  
2215 W. County Road B, St. Paul, Minn.

MAY 31, 1972