

FROM THE OFFICE OF

CHARLES O. GEORGI COMPANY

2215 West County Road B

Saint Paul, Minnesota 55113

REGISTERED CIVIL ENGINEER AND LAND SURVEYOR

Certificate of Survey

I Hereby Certify that this plat shows a survey made by me of the property described on this plat, and that the corners are correctly placed as shown, and that all locations have been correctly shown. ^{10/26/71 divide into 2 parcels with center I.P. not placed.}

Surveyed For Peter Van Dusartz

Date October 1971

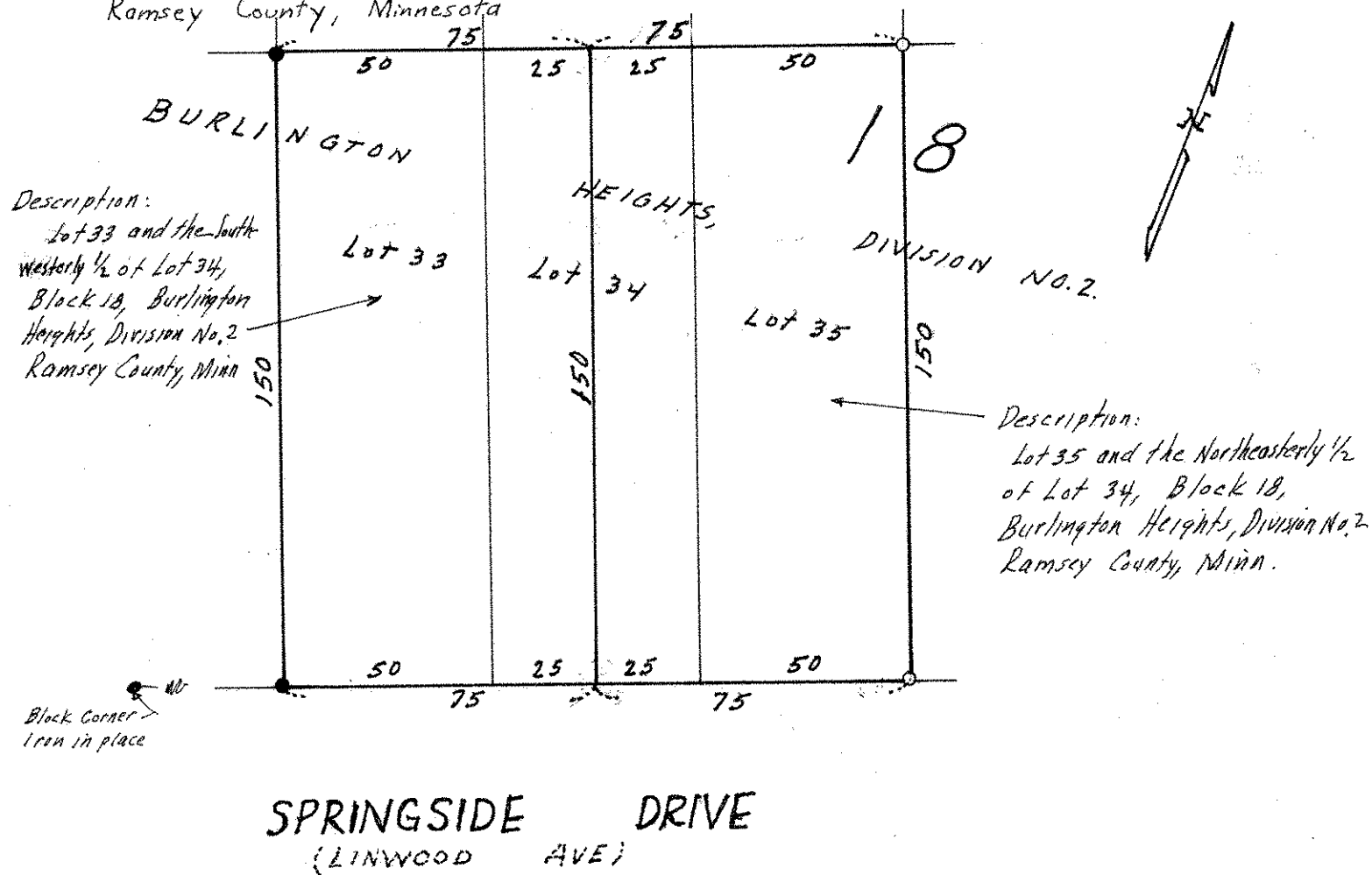
Scale 1" = 40'

By

Charles O. Georgi
REGISTERED LAND SURVEYOR

Description: (overall)

Lots 33, 34, +35, Block 18, Burlington Heights, Division No. 2
Ramsey County, Minnesota



- o Denotes Iron Monument
- Iron found in place.

Surveyors Note:

This plat was recorded in 1888 and has missing survey control data, and thus, was surveyed in accord with existing monuments in place, and plat record data.