

CHARLES O. GEORGI COMPANY

2215 West County Road B

Saint Paul 8, Minnesota

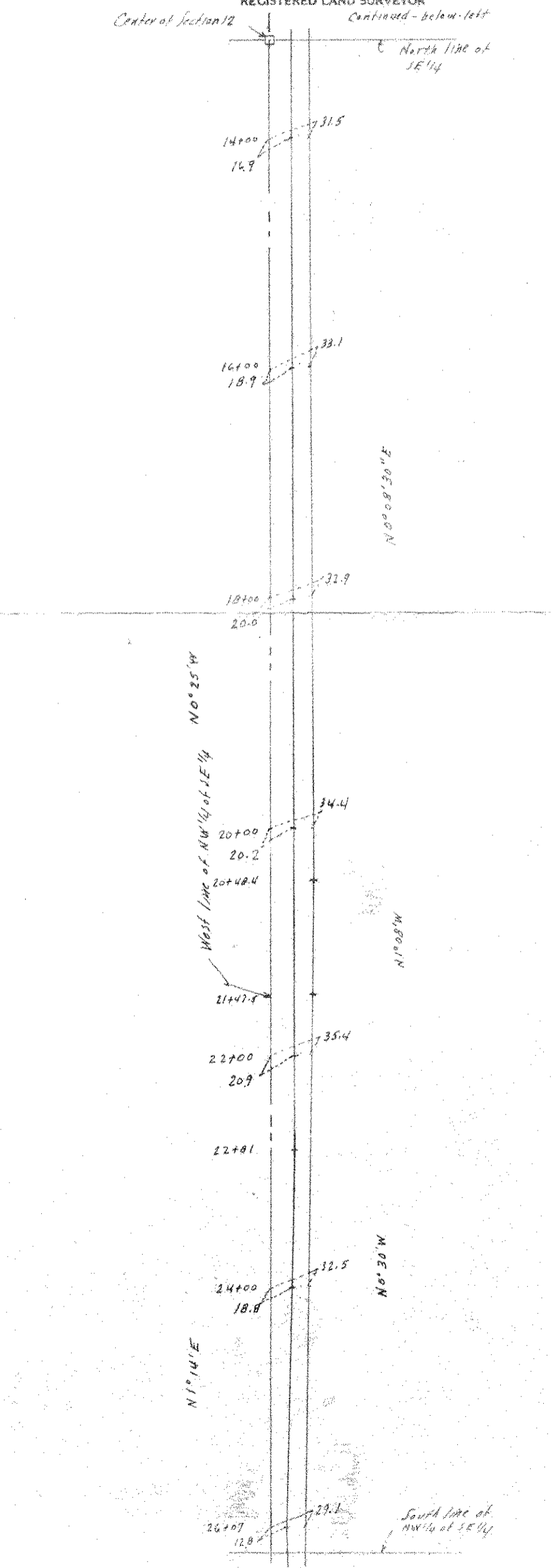
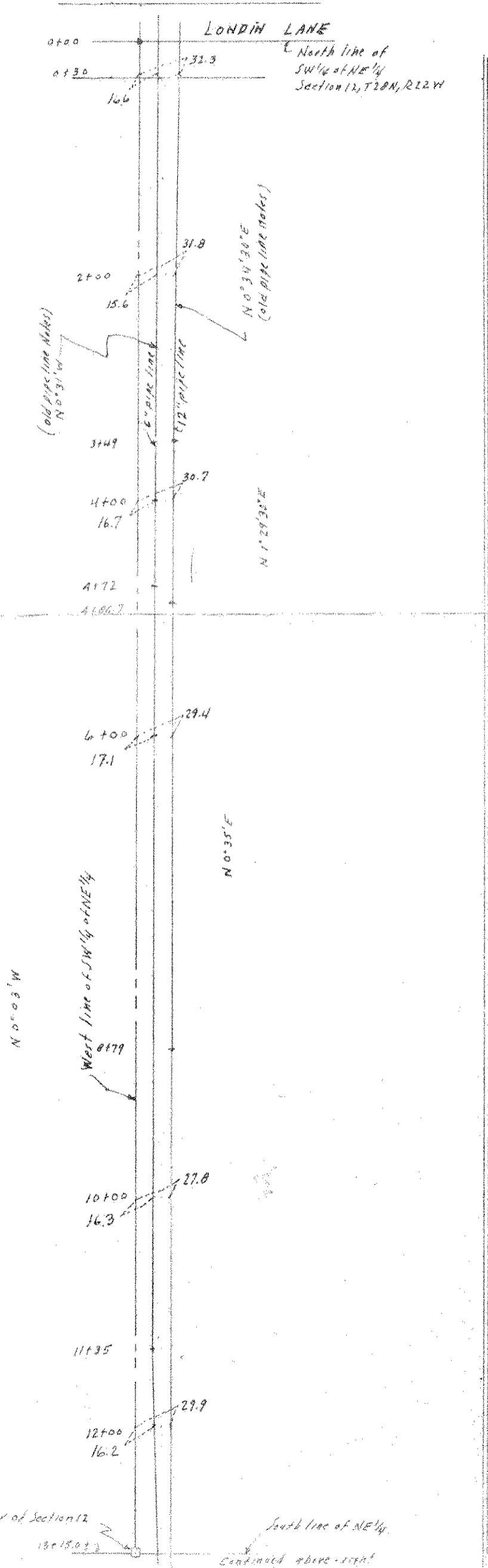
MINNESOTA REGISTERED LAND SURVEYOR

Certificate of Survey

I Hereby Certify that this plat shows a survey made by me of the ^{pipe lines location} property described on this plat, and that the corners are correctly placed as shown, and that all locations, encroachments, etc., have been correctly shown.

Surveyed For R. W. Realty Co.
Date April 15, 1971
Scale 1" = 100'

By Charles O. Georgi
REGISTERED LAND SURVEYOR



Location made from field sketch of pipe lines by William Bros. location from
two sets of legal description, it is recommended that the easement across each 9/16 3/16
Section be made uniform in width.

enter of Section 12
13+15.07
South line of NE 1/4
Continued above-right

South line of NW 1/4 of SE 1/4