

NAMSEY COUNTY, MINNESOTA

Contains 66,256 Sq. Ft., more or less.

SURVEYORS NOTE:

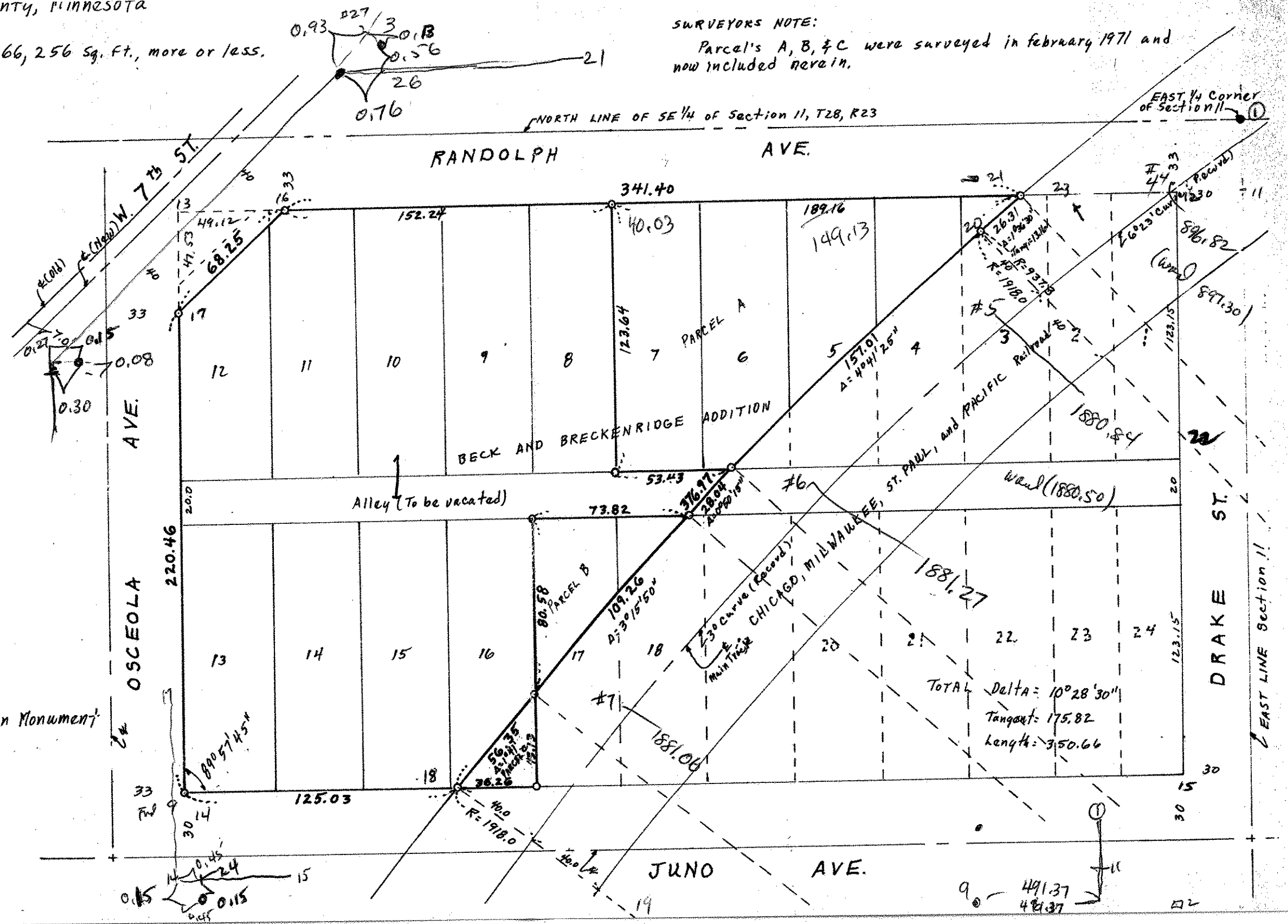
Parcel's A, B, & C were surveyed in February 1971 and now included herein.

REGISTERED L.A.I.

BY

Scale

o Denotes Iron Monument



TOTAL Delta =  $10^{\circ}28'30''$   
 Tangent = 175.82  
 Length = 350.66