

FROM THE OFFICE OF

CHARLES O. GEORGI COMPANY

2215 West County Road B

Saint Paul, Minnesota 55113

REGISTERED CIVIL ENGINEER AND LAND SURVEYOR

Certificate of Survey

I Hereby Certify that this plat shows a lot survey made by me on the property described on this plat, and that all locations, have been correctly shown, and that the corners have been correctly placed as shown.

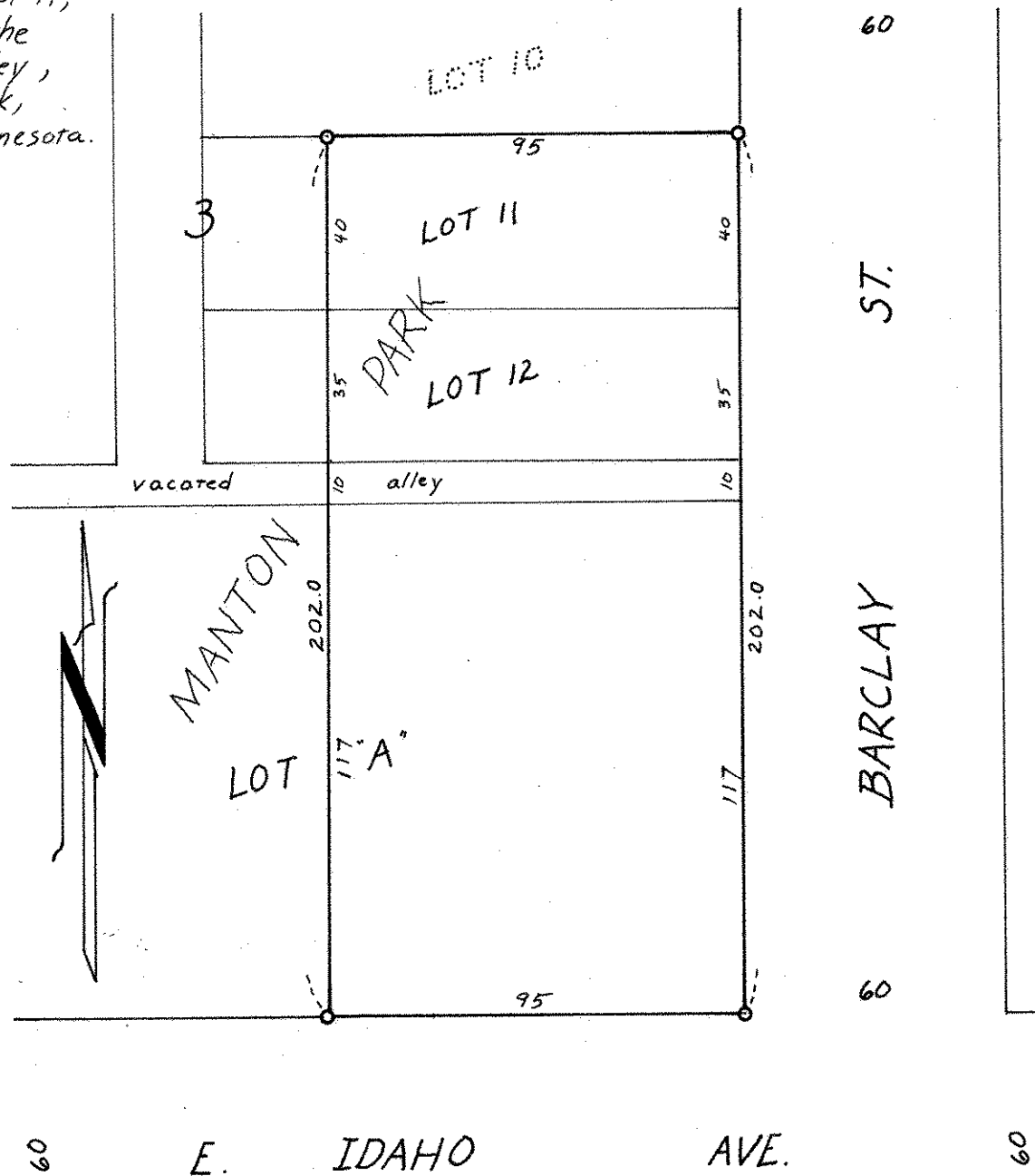
Date June, 1971

Scale 1" = 40'

By *Charles O. Georgi*
REGISTERED LAND SURVEYOR

Clifford Nygard
Description:

The East 95 feet of lot A,
lots 11 and 12 and the
adjoining vacated alley,
Block 3, Manton Park,
Ramsey County, Minnesota.



○ Denotes Iron Pipe Monument found in place