

FROM THE OFFICE OF

CHARLES O. GEORGI COMPANY

2215 West County Road B

Saint Paul, Minnesota 55113

REGISTERED CIVIL ENGINEER AND LAND SURVEYOR

**Certificate
of Survey**

I Hereby Certify that this plat shows a lot survey made by me on the property described on this plat, and that all locations, have been correctly shown, and that the corners are correctly placed as shown.

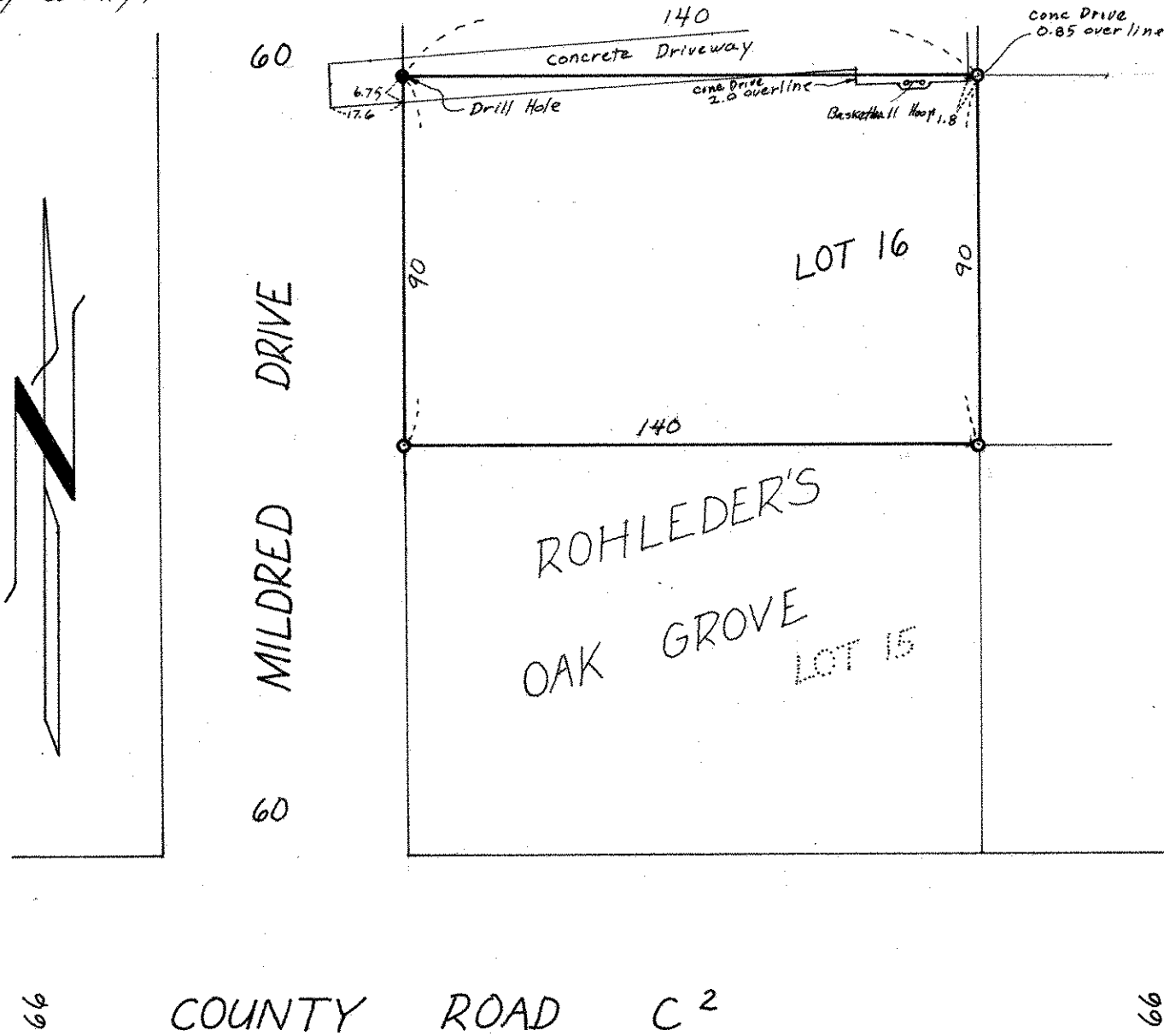
Date May, 1971

Scale 1" = 40'

By Charles O. Georgi
REGISTERED LAND SURVEYOR

Wally Bauer
Description:

Lot 16, Rohleder's Oak Grove,
Ramsey County, Minnesota.



o Denotes Iron Pipe Monument