

FROM THE OFFICE OF

# CHARLES O. GEORGI COMPANY

2215 West County Road B

Saint Paul, Minnesota 55113

REGISTERED CIVIL ENGINEER AND LAND SURVEYOR



## Certificate of Survey

I Hereby Certify that this plat shows a survey made by me of the property described on this plat, and that the corners are correctly placed as shown, and that all locations have been correctly shown.

Surveyed For *Louise Adcock*  
*Dorothy Stry - Keller Corp.*

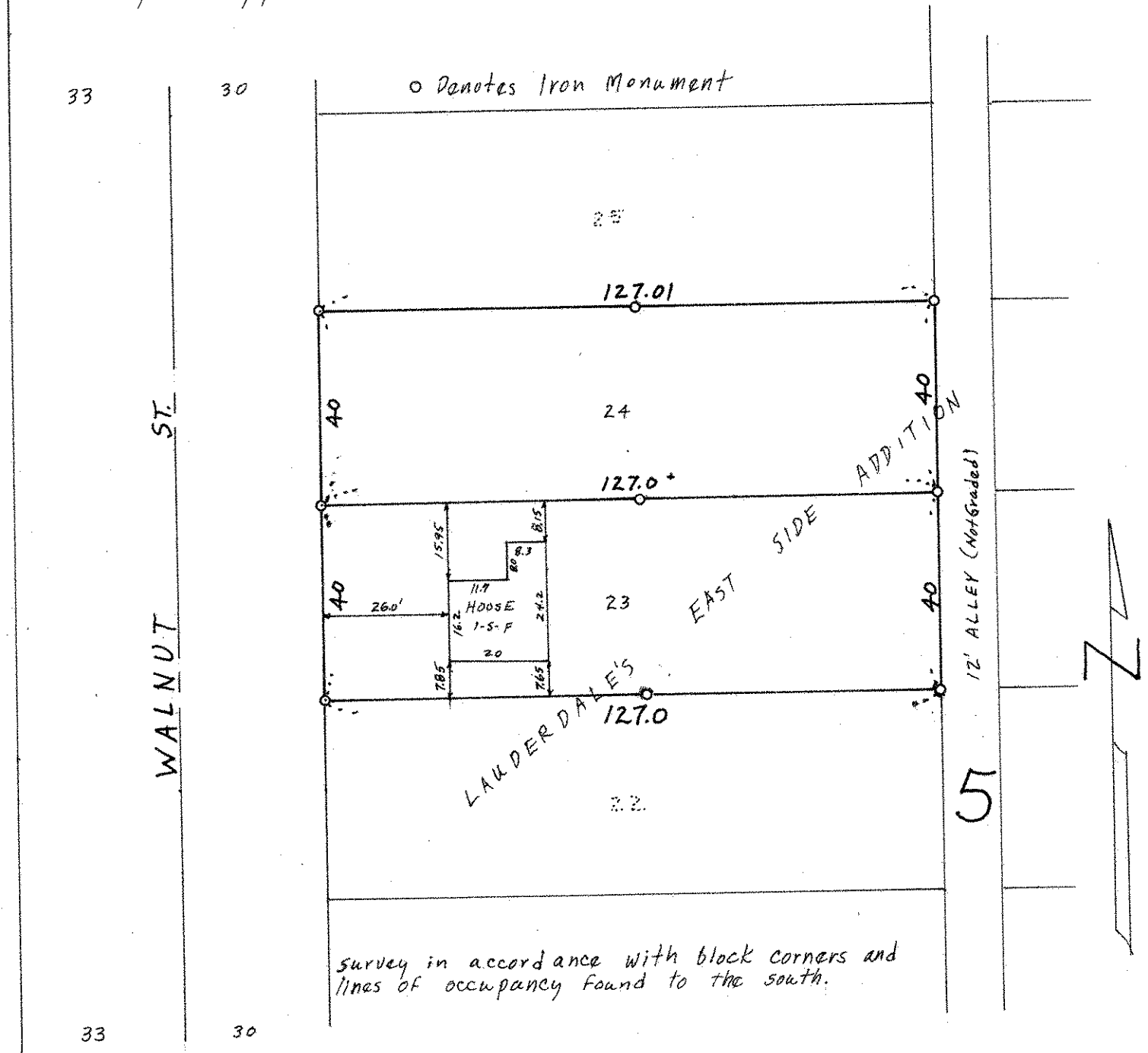
Date *August 1971*

Scale *1" = 30'*

By *Charles O. Georgi*  
REGISTERED LAND SURVEYOR

### Description:

Lot 23 and Lot 24, Block 5, Lauderdale's East Side Addition, Ramsey County, Minn.



Survey in accordance with block corners and lines of occupancy found to the south.