

FROM THE OFFICE OF

CHARLES O. GEORGI COMPANY

2215 West County Road B

Saint Paul, Minnesota 55113

REGISTERED CIVIL ENGINEER AND LAND SURVEYOR

Certificate of Survey

I Herby Certify that this plat shows a survey made by me of the property described on this plat, and that the corners are correctly placed as shown, and that all locations have been correctly shown.

Surveyed For Jim Hartigan

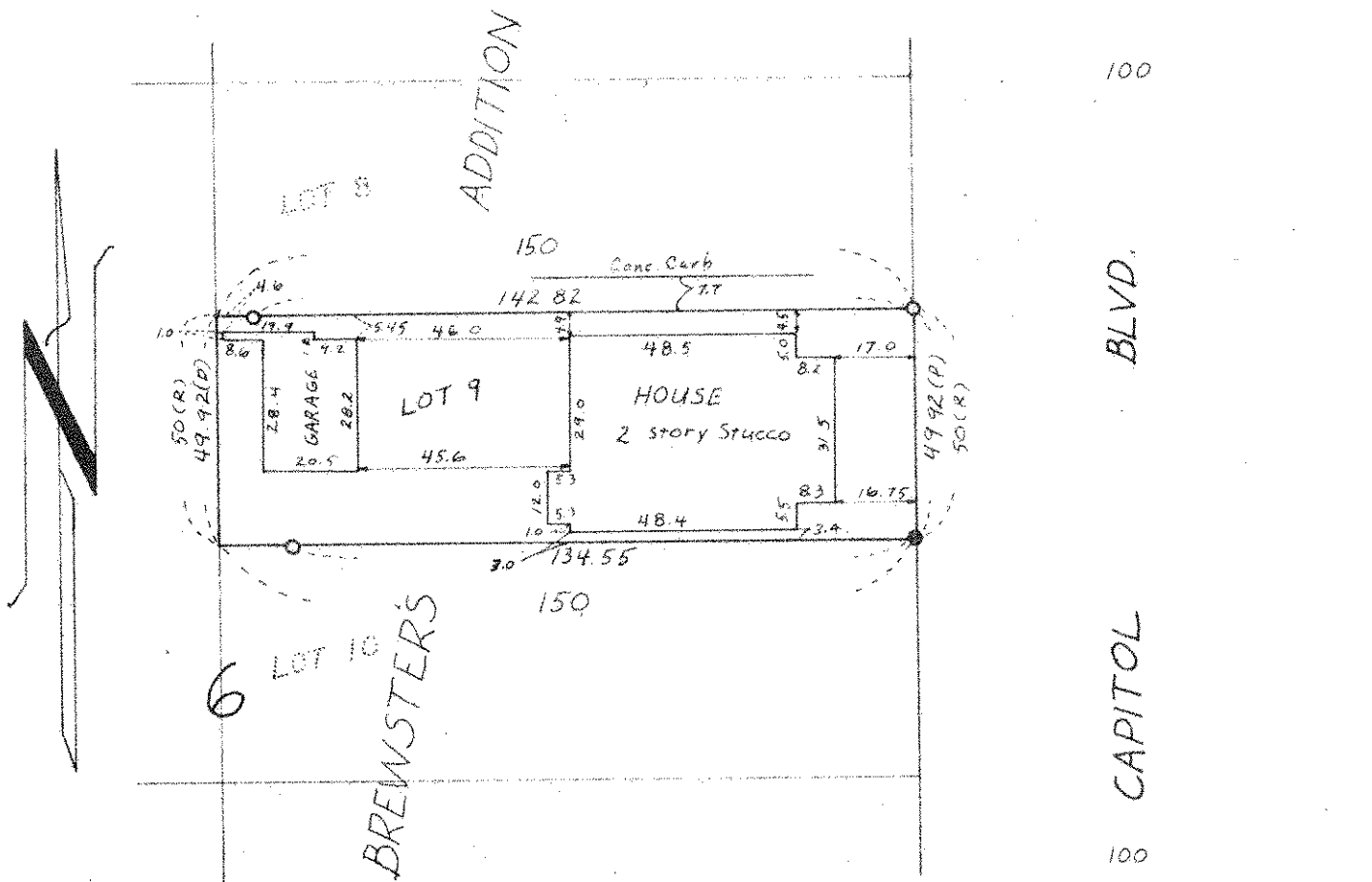
Date August, 1971

Scale 1" = 40'

By Charles O. Georgi
REGISTERED LAND SURVEYOR

Description:

Lot 9, Block 6, Brewster's Addition,
Ramsey County, Minnesota.



- Denotes Iron Pipe Monument
- Denotes Iron Pipe Monument found in place
- (P) Denotes Prorated Distance
- (R) Denotes Record Distance