

FROM THE OFFICE OF

CHARLES O. GEORGI COMPANY

2215 West County Road B

Saint Paul, Minnesota 55113

REGISTERED CIVIL ENGINEER AND LAND SURVEYOR



I Hereby Certify that this plat shows a survey made by me of the property described on this plat, and that the corners are correctly placed as shown, and that all locations have been correctly shown.

Surveyed For F. J. HORNER Co.

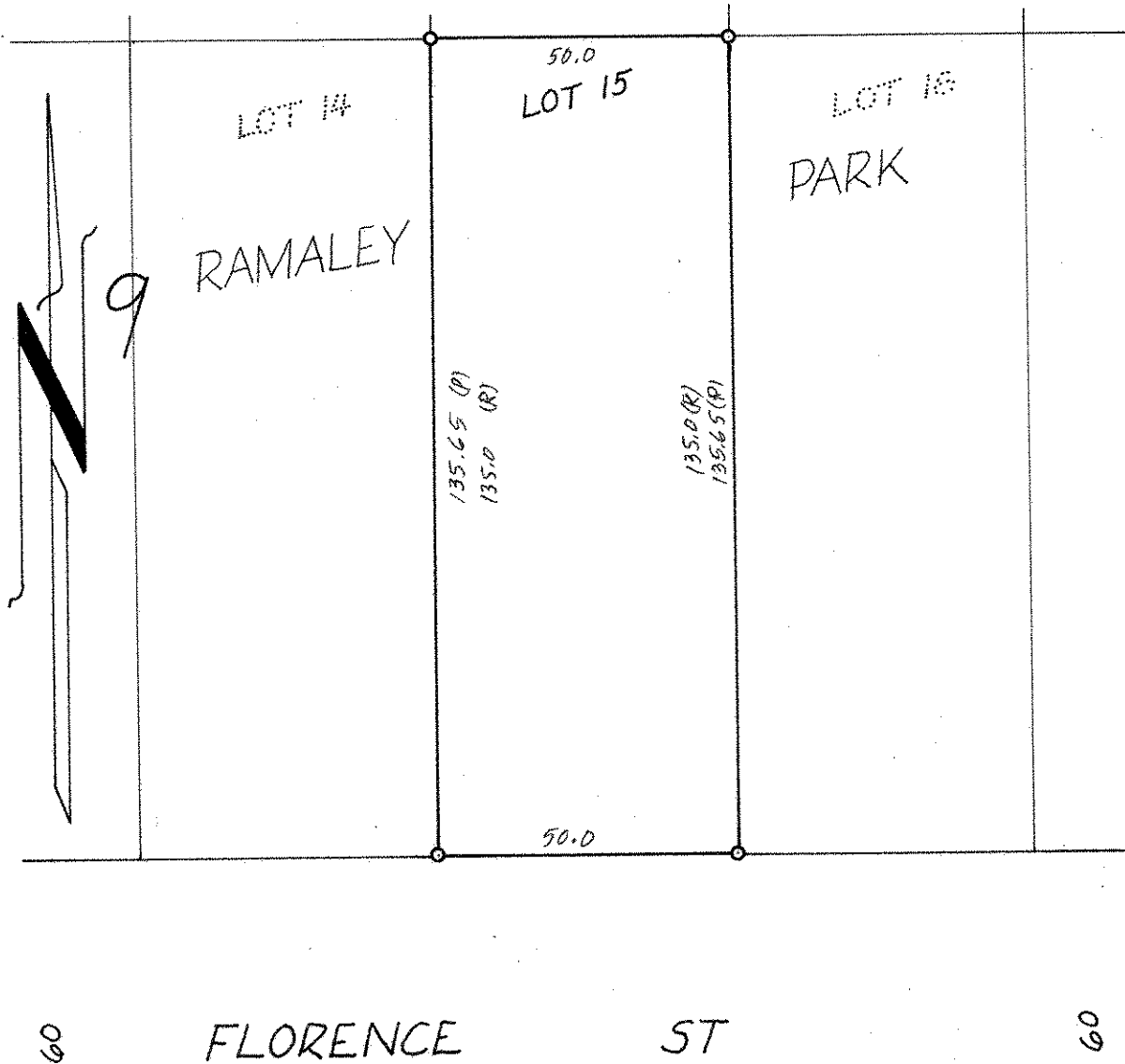
Date June, 1971

Scale 1" = 30'

By Charles O. Georgi
REGISTERED LAND SURVEYOR

Description:

Lot 15, Block 9, Ramaley Park,
Ramsey County, Minnesota.



Note: An excess of 5.4 feet, North & South, in North 1/2 of Ramaley Park was prorated in accord with Street improvements.

- o Denotes Iron Pipe Monument
- (R) Denotes Record Plat demension
- (P) Prorated measurement