

FROM THE OFFICE OF

CHARLES O. GEORGI COMPANY

2215 West County Road B

Saint Paul, Minnesota 55113

REGISTERED CIVIL ENGINEER AND LAND SURVEYOR

**Certificate
of Survey**

I Hereby Certify that this plat shows a survey made by me of the property described on this plat, and that the corners are correctly placed as shown, and that all locations have been correctly shown.

Surveyed For *Jos. Doty*

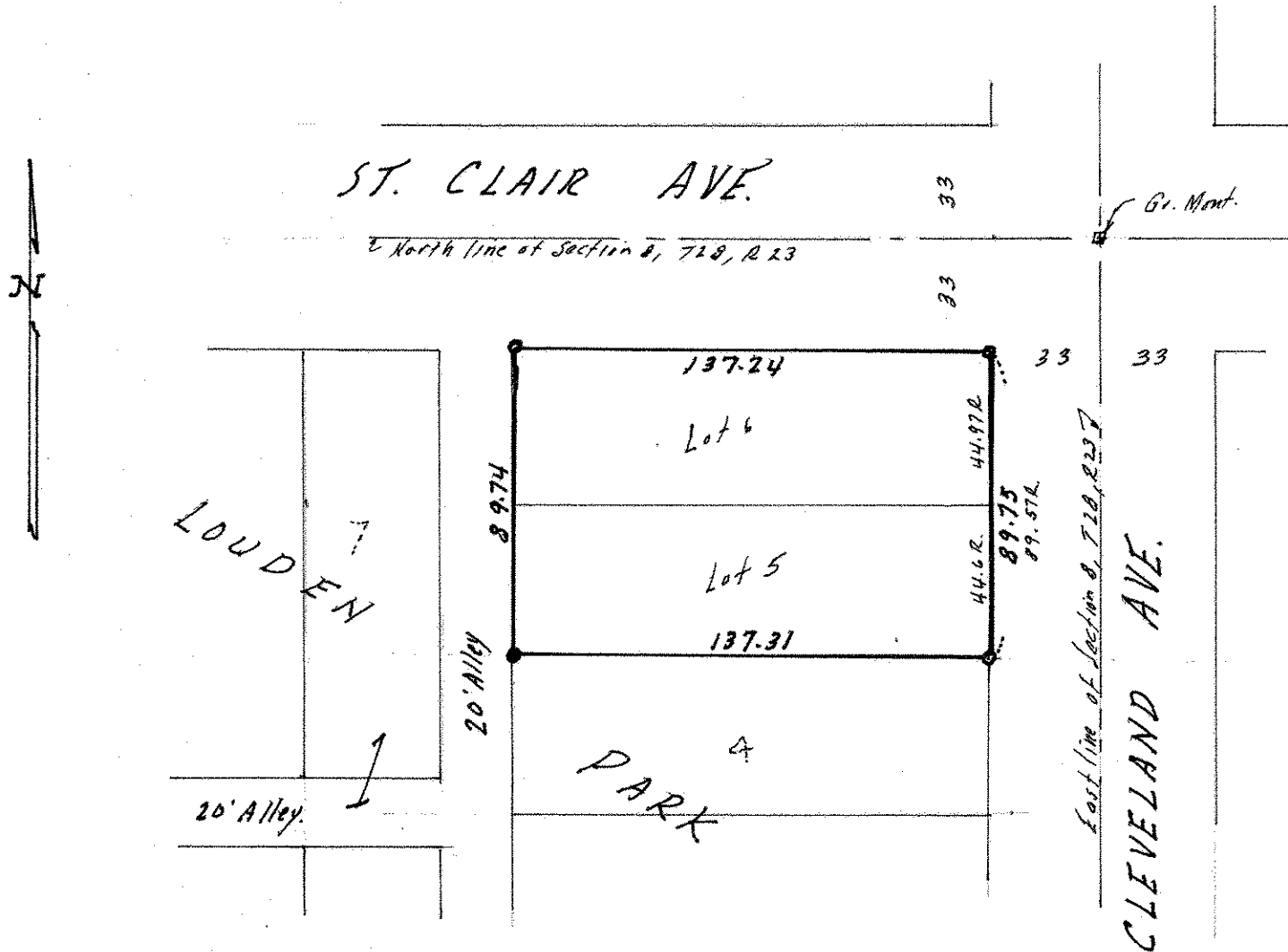
Date *September 1970*

Scale *1" = 50'*

By *Charles O. Georgi*
REGISTERED LAND SURVEYOR

Description:

*Lots 5 and 6,
Block 1,
Louden Park
St. Paul, Ramsey County, Minn.*



- o Denotes Iron Pipe Monument
 - Iron Monument found in place
- Excess North-South prorated equally.
R - record distance.*