

FROM THE OFFICE OF

# CHARLES O. GEORGI COMPANY

2215 West County Road B

Saint Paul, Minnesota 55113

REGISTERED CIVIL ENGINEER AND LAND SURVEYOR

## Certificate of Survey

I Hereby Certify that this plat shows a survey made by me of the property described on this plat, and that the corners are correctly placed as shown, and that all locations have been correctly shown.

Surveyed For *Northwestern Alano Society*

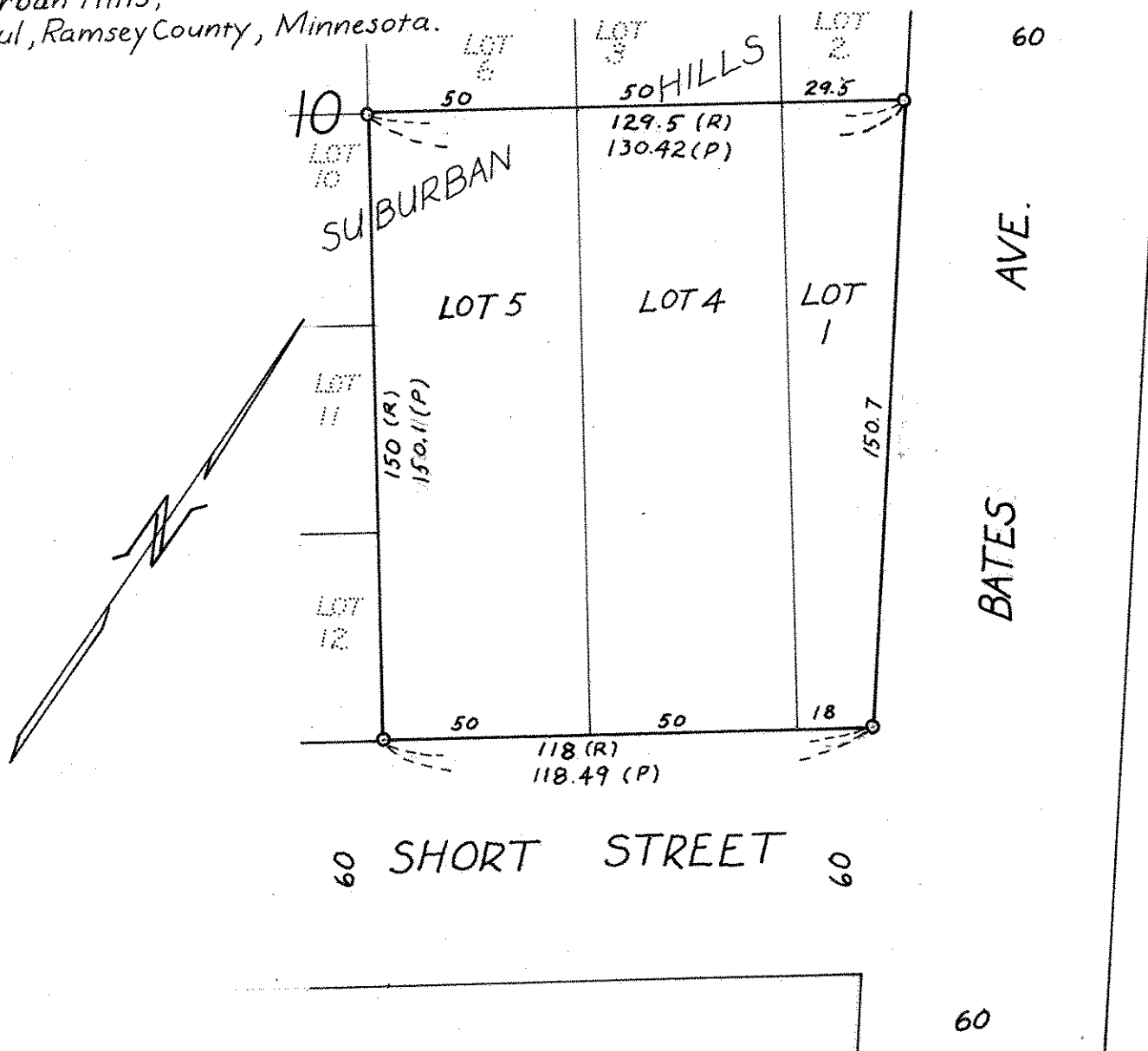
Date *Aug. 1970*

Scale *1" = 40'*

By *Charles O. Georgi*  
REGISTERED LAND SURVEYOR

**Description:**

Lots 1, 4, and 5,  
Block 10,  
Suburban Hills,  
St. Paul, Ramsey County, Minnesota.



o Denotes Iron Monument  
(R) Denotes Record Distance  
(P) Denotes Prorated Distance