

FROM THE OFFICE OF

# CHARLES O. GEORGI COMPANY

2215 West County Road B

Saint Paul, Minnesota 55113

REGISTERED CIVIL ENGINEER AND LAND SURVEYOR



## Certificate of Survey

I Hereby Certify that this plat shows a survey made by me of the property described on this plat, and that the corners are correctly placed as shown, and that all locations have been correctly shown.

Surveyed For Rose Plumbing

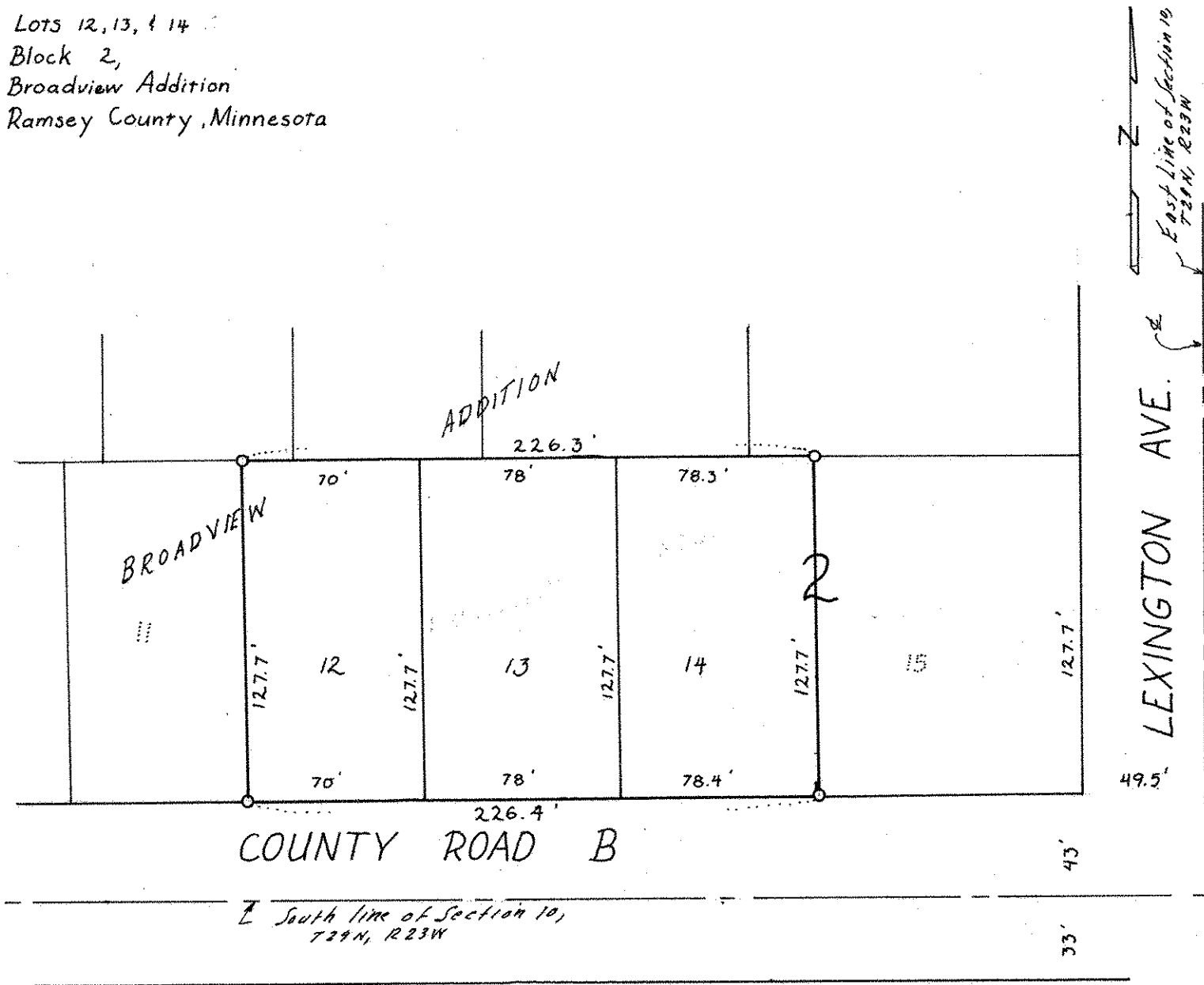
Date May 1970

Scale 1" = 60'

By Charles O. Georgi  
REGISTERED LAND SURVEYOR

**Description:**

Lots 12, 13, & 14  
Block 2,  
Broadview Addition  
Ramsey County, Minnesota



○ Denotes Iron Monument