

FROM THE OFFICE OF

CHARLES O. GEORGI COMPANY

2215 West County Road B

Saint Paul, Minnesota 55113

REGISTERED CIVIL ENGINEER AND LAND SURVEYOR

**Certificate
of Survey**

I Hereby Certify that this plat shows a survey made by me of the property described on this plat, and that the corners are correctly placed as shown, and that all locations have been correctly shown.

Surveyed For *Hamline Methodist Church - Bob Rosenthal*

Date *July, 1970*

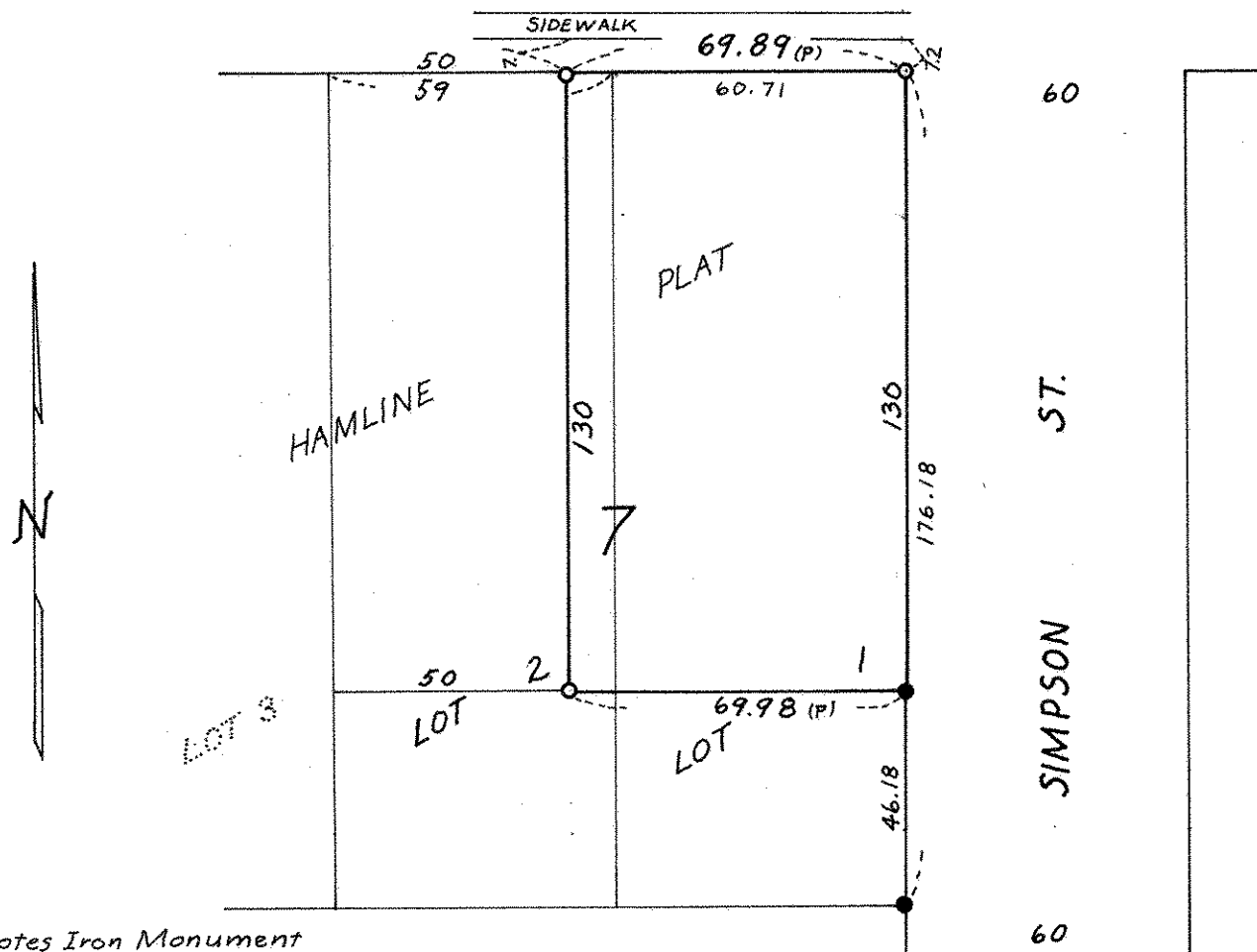
Scale *1" = 40'*

By *Charles O. Georgi*
REGISTERED LAND SURVEYOR

Description:

*The North 130' of lot 2 except the West 50' thereof,
And the North 130' of lot 1, Block 7, Hamline Plat.
Saint Paul, Ramsey County, Minnesota.*

80 W. ENGLEWOOD AVE. 80



- Denotes Iron Monument
- Denotes Iron Monument found in place
- (P) Denotes Prorated measurement where differs from Record distance