

# CHARLES O. GEORGI COMPANY

2215 West County Road B

Saint Paul 8, Minnesota

MINNESOTA REGISTERED LAND SURVEYOR

## Certificate of Survey

I Hereby Certify that this plat shows a survey made by me of the property described on this plat, and that the corners are correctly placed as shown, and that all locations, encroachments, etc., have been correctly shown.

Surveyed For <sup>or by</sup> L. E. Tyler

Date July 1970

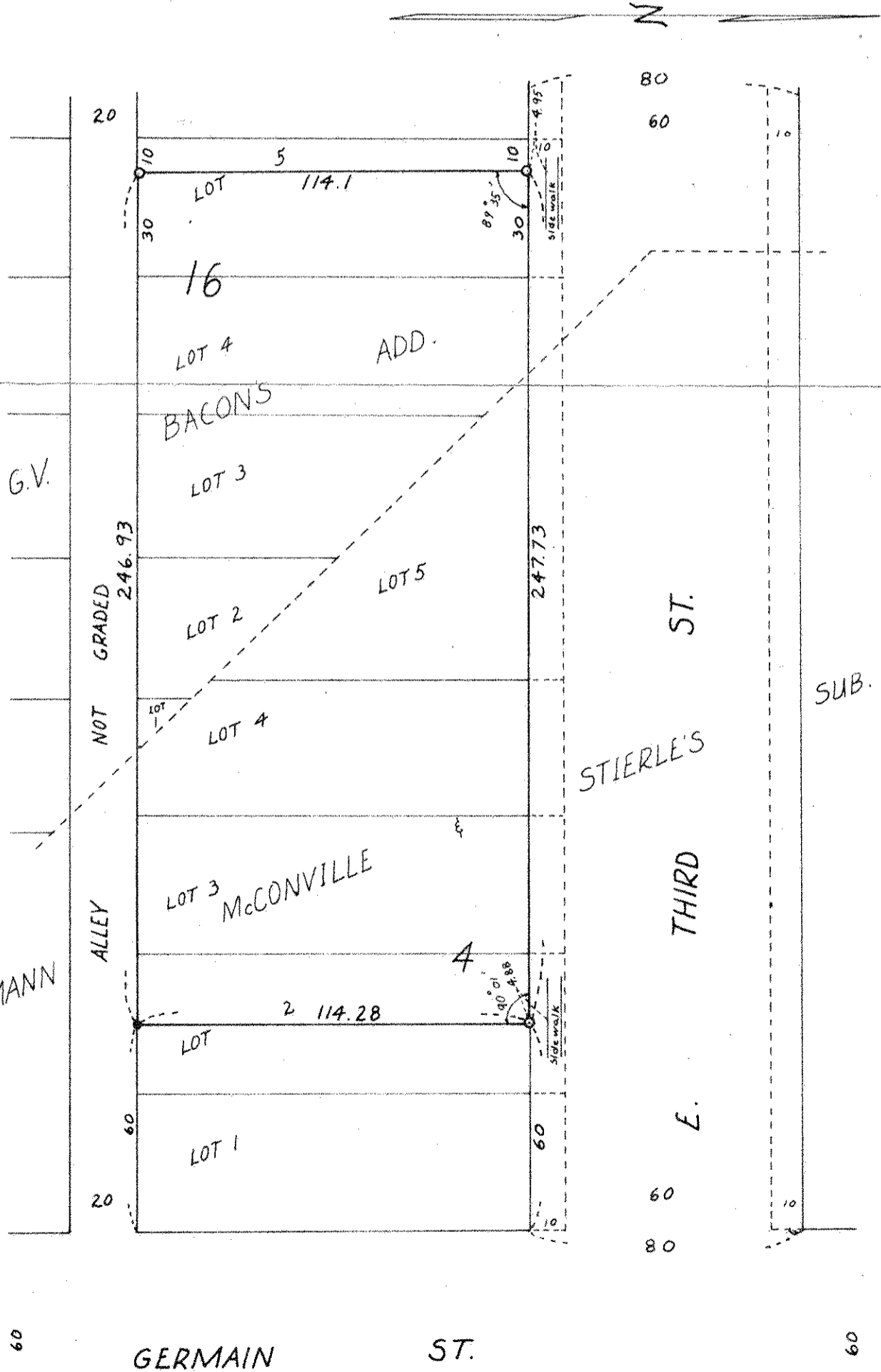
Scale 1" = 40'

By Charles O. Georgi

REGISTERED LAND SURVEYOR

Subject to street widening, that part of lot 2 lying West of a line 60 feet West from and parallel with the East line of Block 4, Heinemann McConville & Stierle's Subdivision, and lots 3, 4 and 5, Block 4, Heineman McConville & Stierle's Subdivision; And lots 1, 2, 3 and 4 and the West 30 feet of lot 5, Block 16, G.V. Bacon's Addition, St. Paul, Ramsey County, Minnesota.

Removed  
7/8/70  
C.T. 3:30 PM



o Denotes Iron Monument.  
• Denotes Drill hole in concrete