

FROM THE OFFICE OF

CHARLES O. GEORGI COMPANY

2215 West County Road B

Saint Paul, Minnesota 55113

REGISTERED CIVIL ENGINEER AND LAND SURVEYOR



**Certificate
of Survey**

I Hereby Certify that this plat shows a survey made by me of the property described on this plat, and that the corners are correctly placed as shown, and that all locations have been correctly shown.

Surveyed For *Delisle Realty*

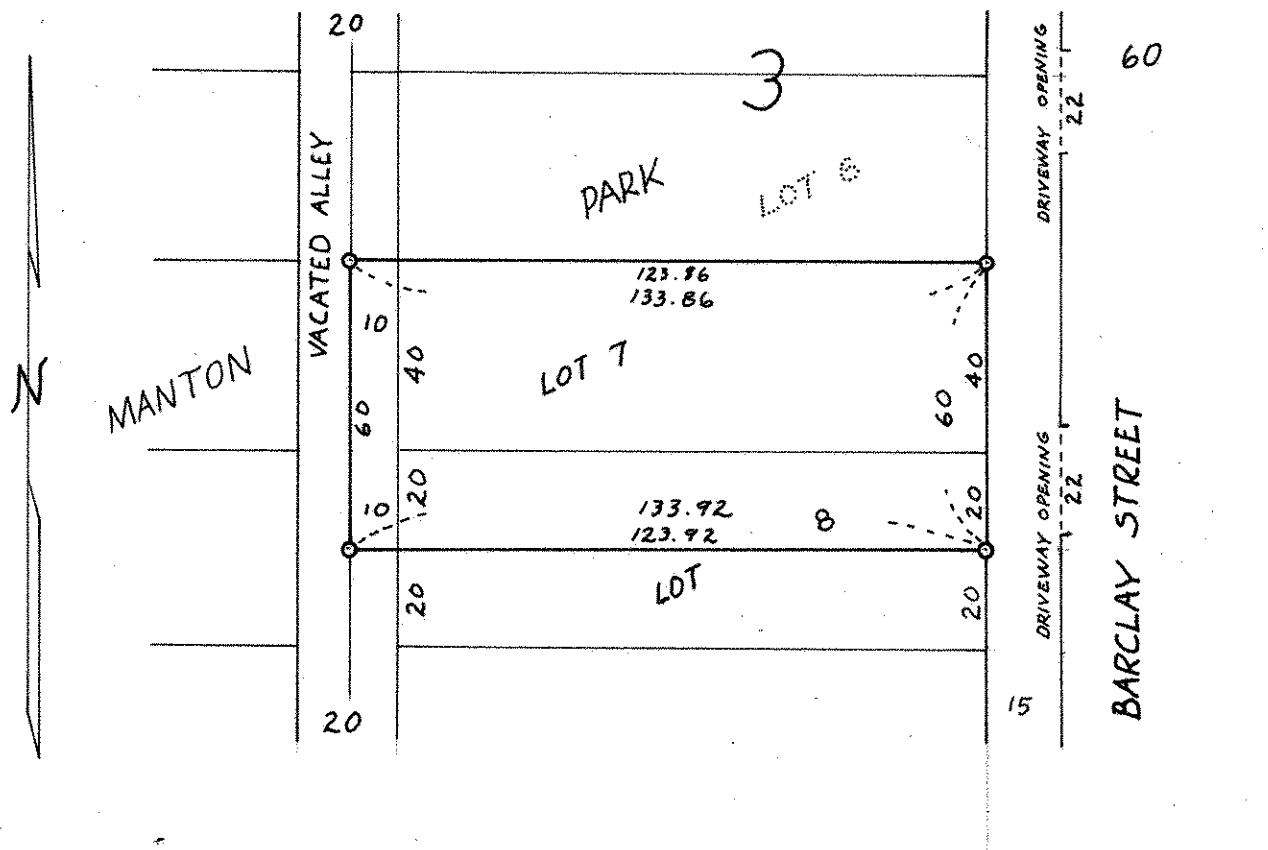
Date *June 1970*

Scale *1" = 40'*

By *Charles O. Georgi*
REGISTERED LAND SURVEYOR

Description:

*Lot 7 and the North 20 feet of lot 8;
and the adjoining Easterly 1/2 of the
vacated alley,
Block 3,
Manton Park,
Ramsey County, Minnesota*



○ Denotes Iron Monument