

FROM THE OFFICE OF

# CHARLES O. GEORGI COMPANY

2215 West County Road B

Saint Paul, Minnesota 55113

REGISTERED CIVIL ENGINEER AND LAND SURVEYOR

## Certificate of Survey

I Hereby Certify that this plat shows a survey made by me of the property described on this plat, and that the corners are correctly placed as shown, and that all locations have been correctly shown.

Surveyed For *DeLisle Realty*

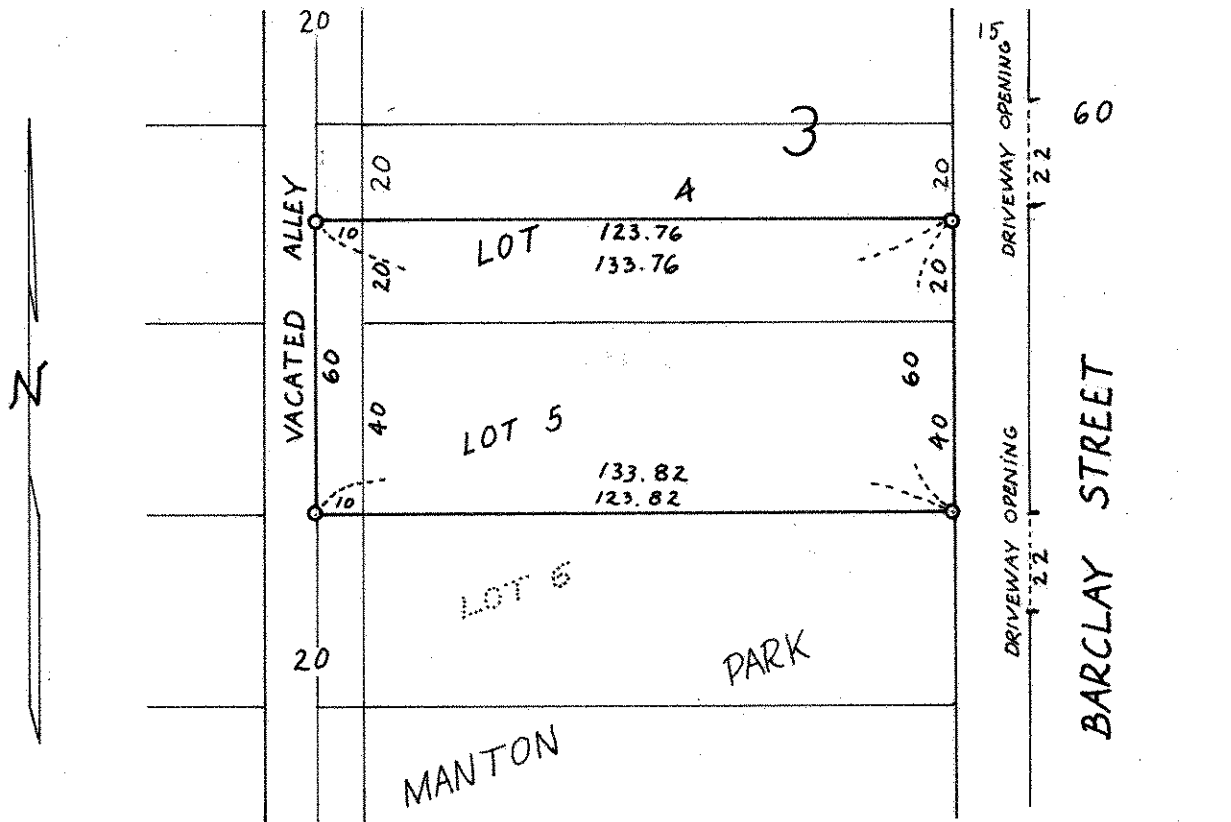
Date *June 1970*

Scale *1" = 40'*

By *Charles O. Georgi*  
REGISTERED LAND SURVEYOR

### Description:

Lot 4 except the North 20 feet thereof  
and lot 5; and the adjoining Easterly  
 $\frac{1}{2}$  of the vacated alley,  
Block 3,  
Manton Park,  
Ramsey County, Minnesota



o Denotes Iron Monument