

FROM THE OFFICE OF

CHARLES O. GEORGI COMPANY

2215 West County Road B

Saint Paul, Minnesota 55113

REGISTERED CIVIL ENGINEER AND LAND SURVEYOR



I Hereby Certify that this plat shows a survey made by me of the property described on this plat, and that the corners are correctly placed as shown, and that all locations have been correctly shown.

Surveyed For *Robert Schneider*

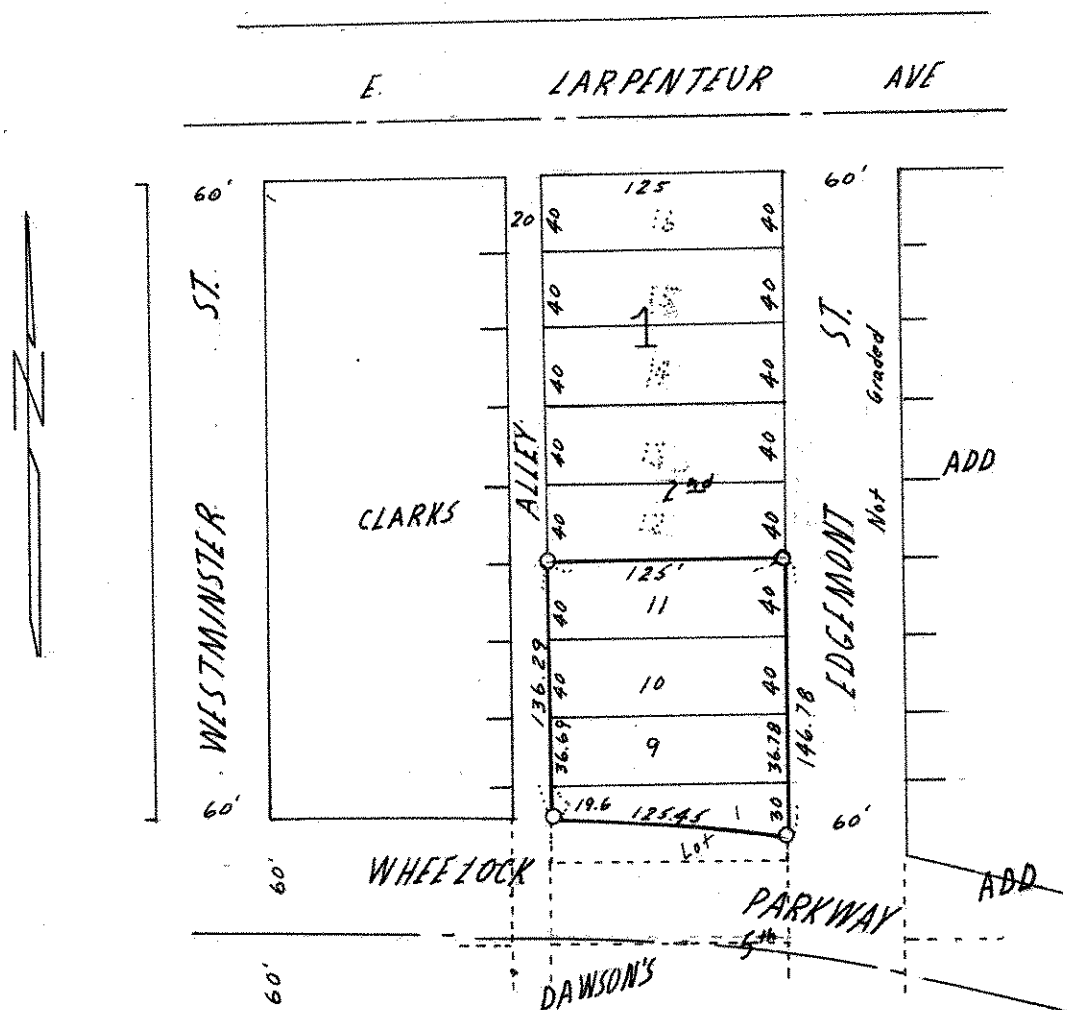
Date *April 1972*

Scale *1" = 100'*

By *Charles O. Georgi*
REGISTERED LAND SURVEYOR

Description:

*Lots 9 thru 11, Block 1, Clarks 2nd Addition,
and part of Lot 1, Block 2, Dawson's 5th Addition lying Northerly
of the North line of Wheelock Parkway.*



O Denotes Iron Monument