

FROM THE OFFICE OF

# CHARLES O. GEORGI COMPANY

2215 West County Road B

Saint Paul, Minnesota 55113

REGISTERED CIVIL ENGINEER AND LAND SURVEYOR

## Certificate of Survey

I Hereby Certify that this plat shows a survey made by me of the property described on this plat, and that the corners are correctly placed as shown, and that all locations have been correctly shown.

Surveyed For White Bear Schools

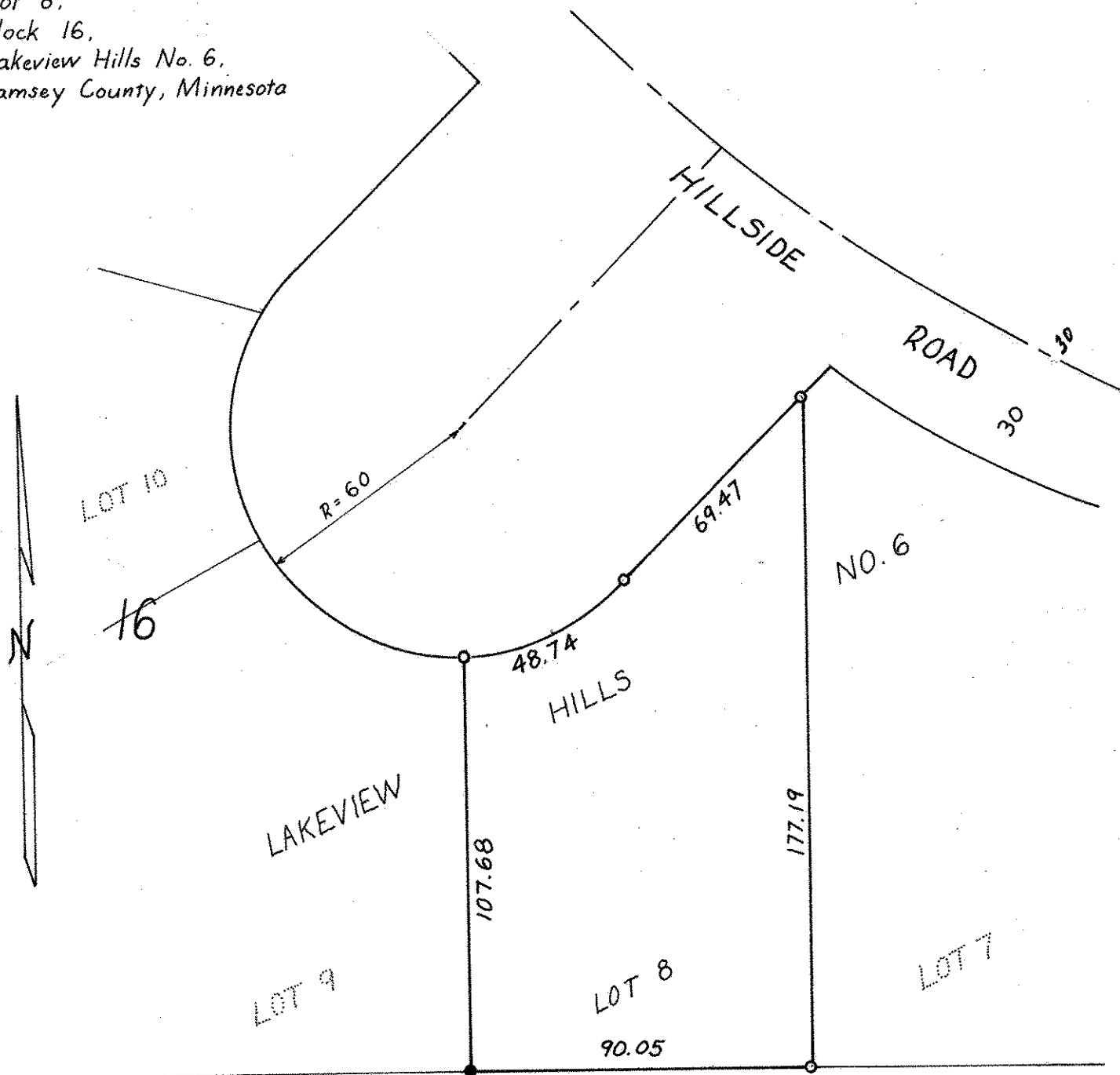
Date May, 1970

Scale 1" = 40'

By Charles O. Georgi  
REGISTERED LAND SURVEYOR

### Description:

Lot 8,  
Block 16,  
Lakeview Hills No. 6,  
Ramsey County, Minnesota



- Denotes Iron Monument
- Denotes Iron Monument found in place

SCHOOL SITE