

FROM THE OFFICE OF

# CHARLES O. GEORGI COMPANY

2215 West County Road B

Saint Paul, Minnesota 55113

REGISTERED CIVIL ENGINEER AND LAND SURVEYOR

## Certificate of Survey

I Hereby Certify that this plat shows a survey made by me of the property described on this plat, and that the corners are correctly placed as shown, and that all locations have been correctly shown. Survey in agreement with iron monuments for entire block. Miscellaneous irons found near lot corners.

Surveyed For...August...Const...Co.

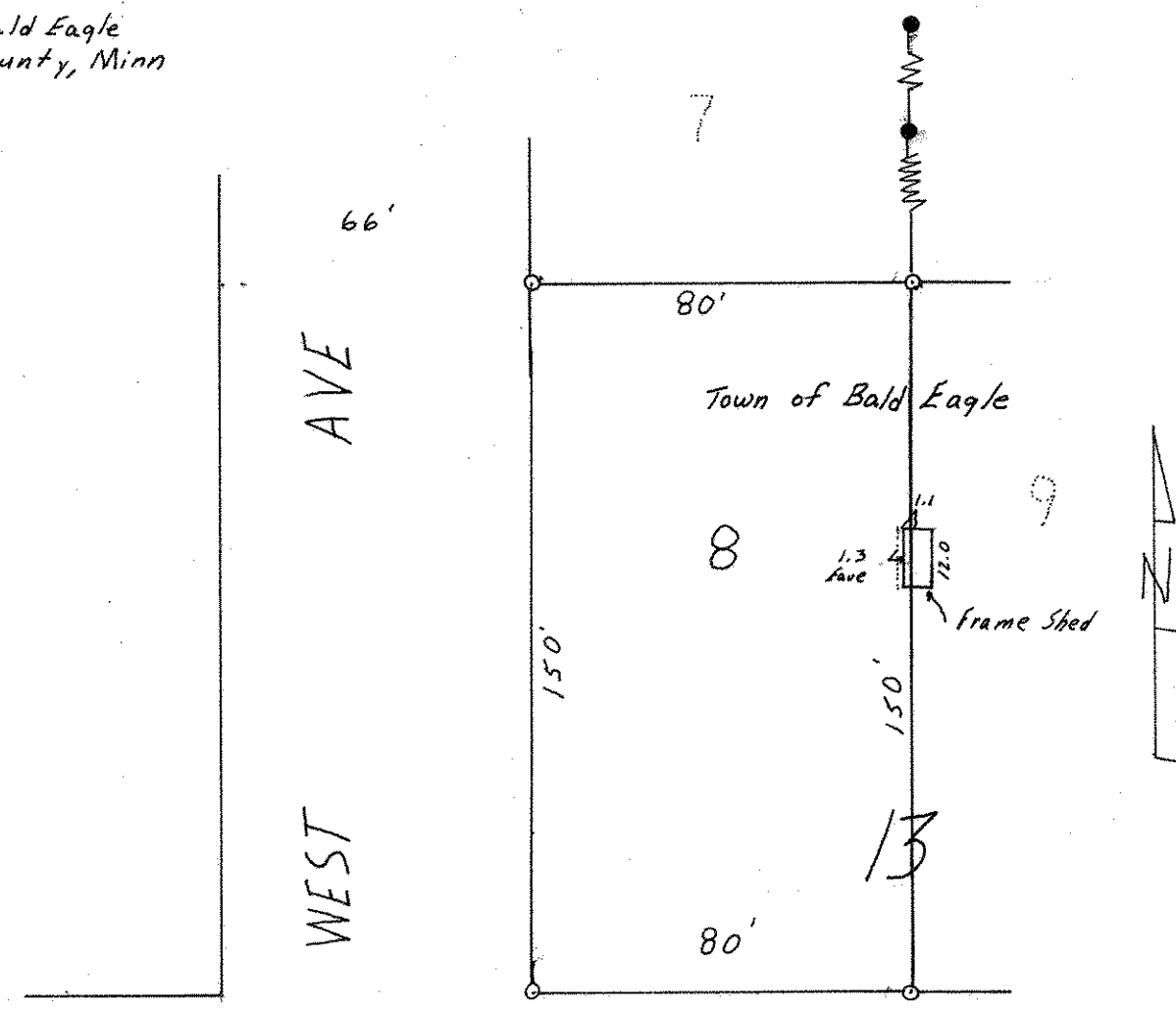
Date...January...1920...

Scale...1" = 40'.....

By *Charles O. Georgi*  
REGISTERED LAND SURVEYOR

**Description:**

Lot 8,  
Block 13,  
Town of Bald Eagle  
Ramsey County, Minn



● Denotes Iron Monument found in place  
○ Denotes Iron Monument