

FROM THE OFFICE OF

**CHARLES O. GEORGI COMPANY**

2215 West County Road B

Saint Paul, Minnesota 55113

REGISTERED CIVIL ENGINEER AND LAND SURVEYOR



**Certificate  
of Survey**

*I Hereby Certify that this plat shows a survey made by me of the property described on this plat, and that the corners are correctly placed as shown, and that all locations have been correctly shown.*

Surveyed For Kenneth W. Bacchus

Date October, 1970

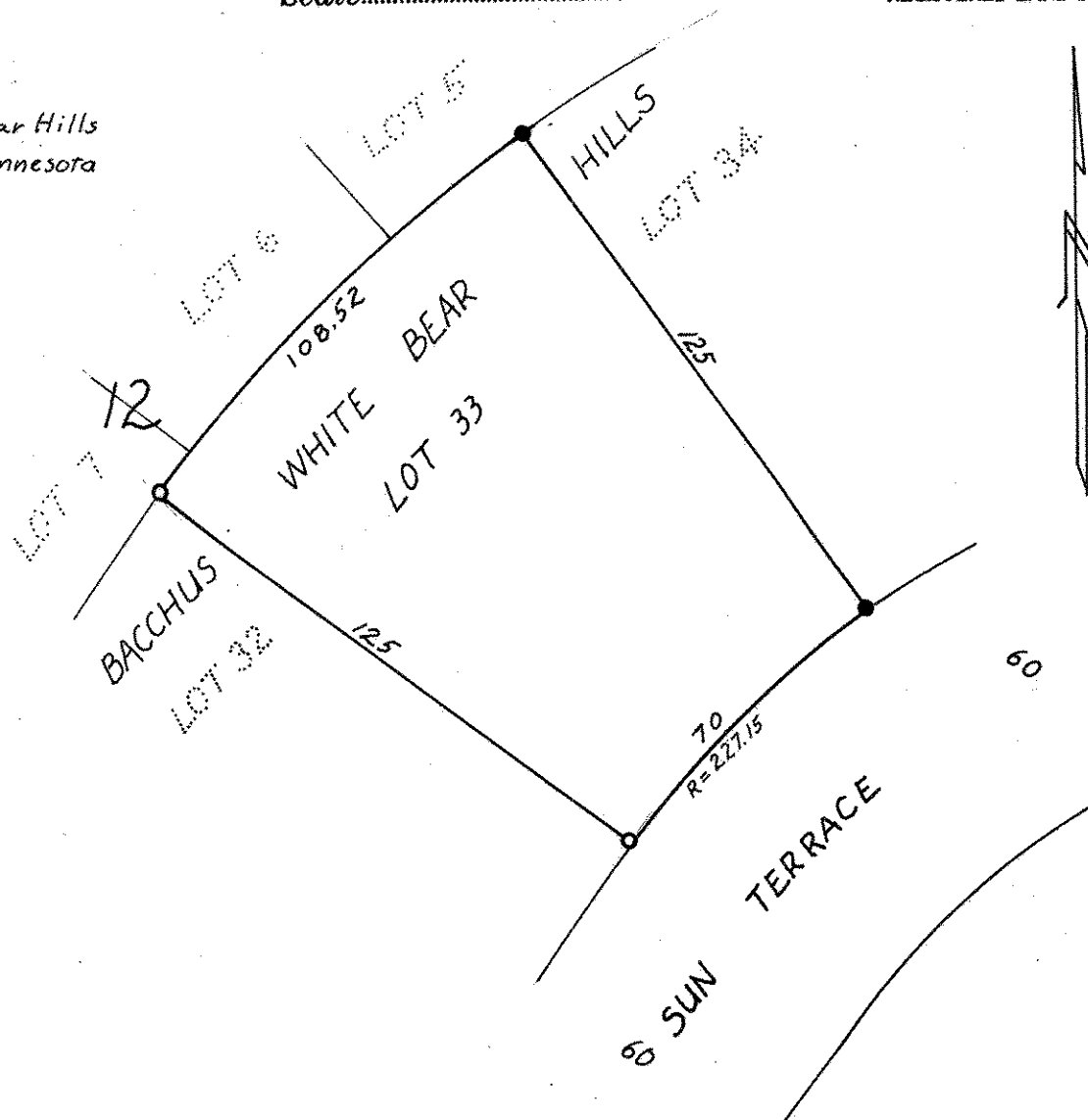
Scale 1" = 40'

By

*Charles O. Georgi*  
REGISTERED LAND SURVEYOR

**Description:**

Lot 33,  
Block 12,  
Bacchus White Bear Hills  
Ramsey County, Minnesota



- Denotes Iron Monument
- Denotes Iron Monument found in place