

FROM THE OFFICE OF

CHARLES O. GEORGI COMPANY

2215 West County Road B

Saint Paul, Minnesota 55113

REGISTERED CIVIL ENGINEER AND LAND SURVEYOR

Certificate of Survey

I Hereby Certify that this plat shows a survey made by me of the property described on this plat, and that the corners are correctly placed as shown, and that all locations have been correctly shown.

Surveyed For *Kenneth W. Bacchus Inc.*

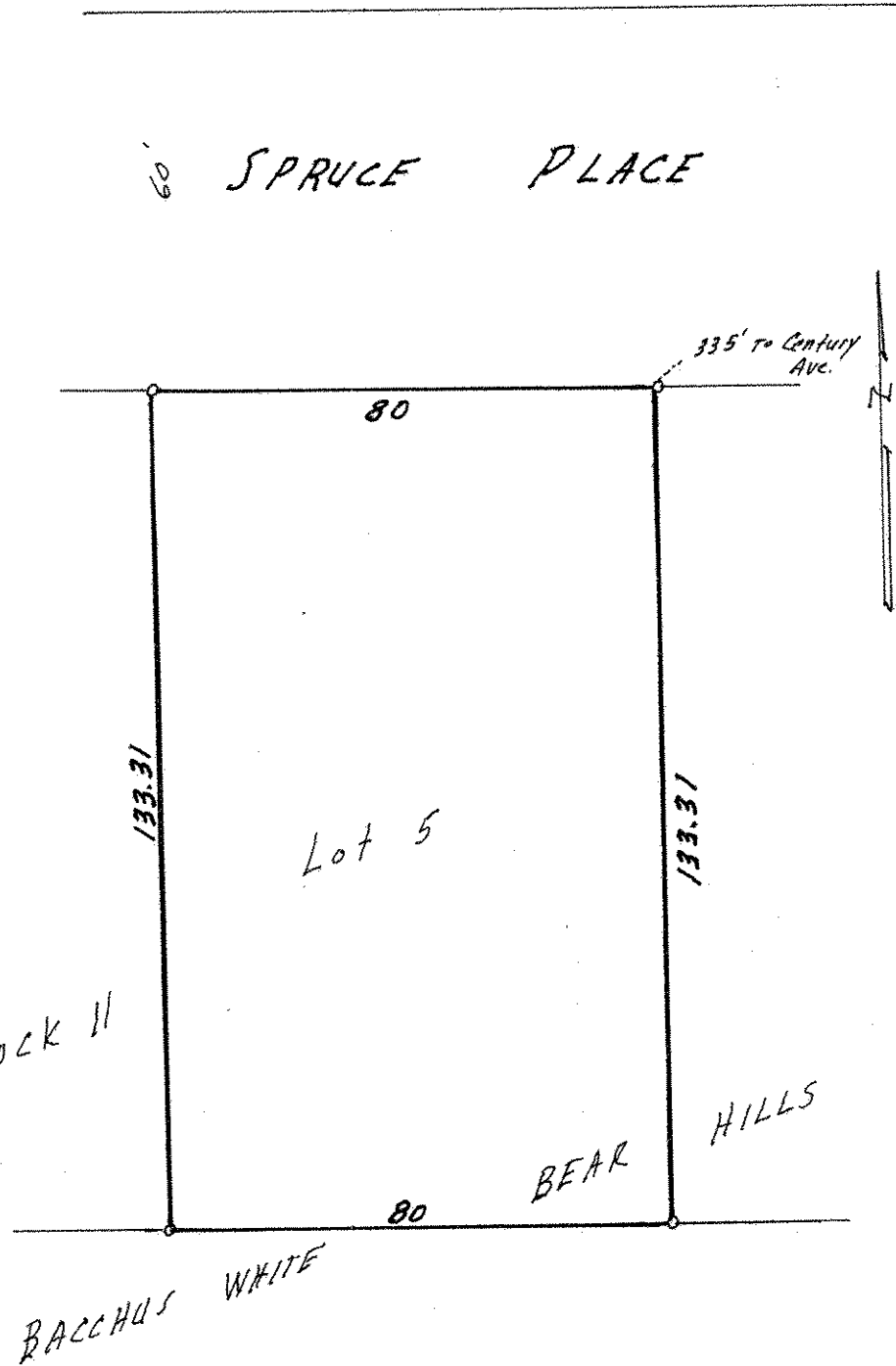
Date *March 1970*

Scale *1" = 30'*

By *Charles O. Georgi*
REGISTERED LAND SURVEYOR

Description:

*Lot 5,
Block 11
Bacchus White Bear Hills
Ramsey County, Minn.*



o Denotes Iron Monument.