

FROM THE OFFICE OF

CHARLES O. GEORGI COMPANY

2215 West County Road B

Saint Paul, Minnesota 55113

REGISTERED CIVIL ENGINEER AND LAND SURVEYOR



Certificate of Survey

I Hereby Certify that this plat shows a survey made by me of the property described on this plat, and that the corners are correctly placed as shown, and that all locations have been correctly shown.

Surveyed For Kenneth W. Bacchus Inc.

Date March 1970

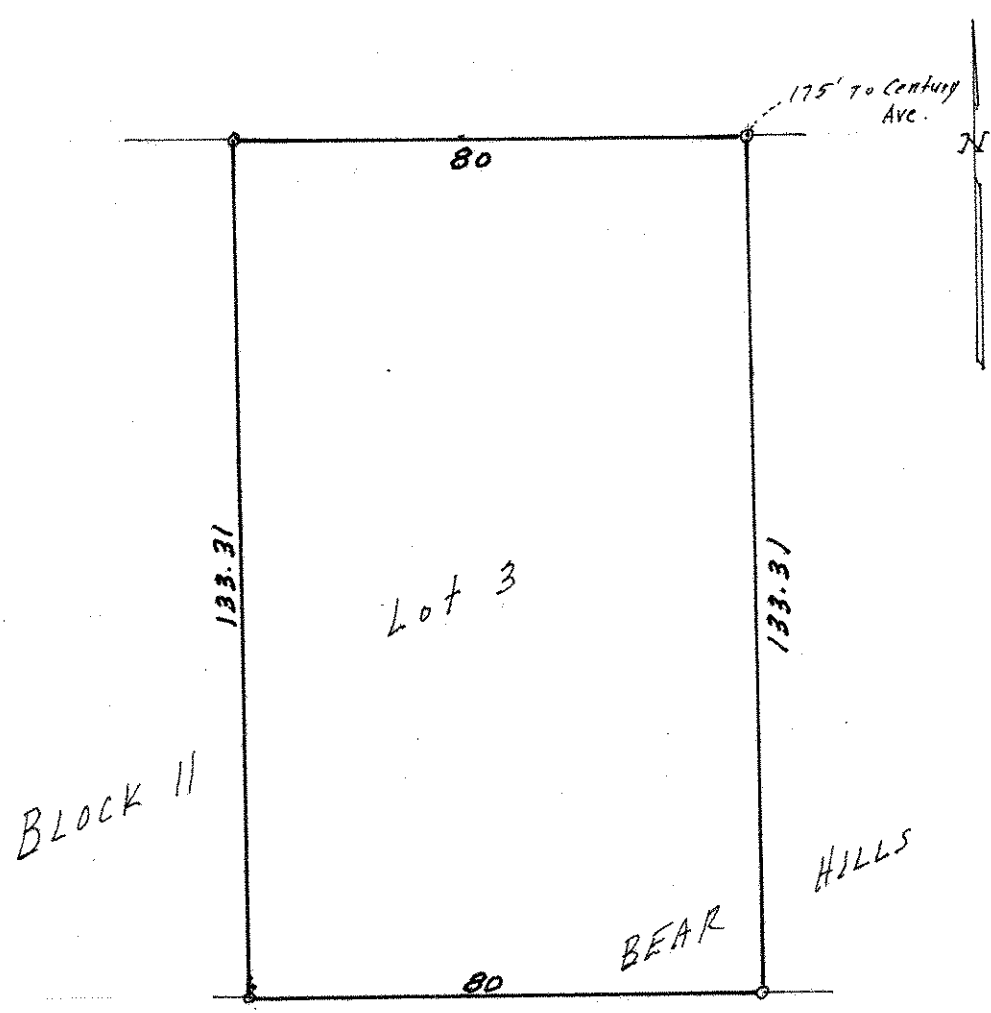
Scale 1" = 30'

By Charles O. Georgi
REGISTERED LAND SURVEYOR

Description:

Lot 3,
Block II
Bacchus White Bear Hills
Ramsey County, Minn

60' SPRUCE PLACE



o Denotes Iron Monument.

BACCHUS WHITE BEAR HILLS