

FROM THE OFFICE OF

# CHARLES O. GEORGI COMPANY

2215 West County Road B

Saint Paul, Minnesota 55113

REGISTERED CIVIL ENGINEER AND LAND SURVEYOR



I Hereby Certify that this plat shows a survey made by me of the property described on this plat, and that the corners are correctly placed as shown, and that all locations have been correctly shown.

Surveyed For *Kenneth M. Bacchus*

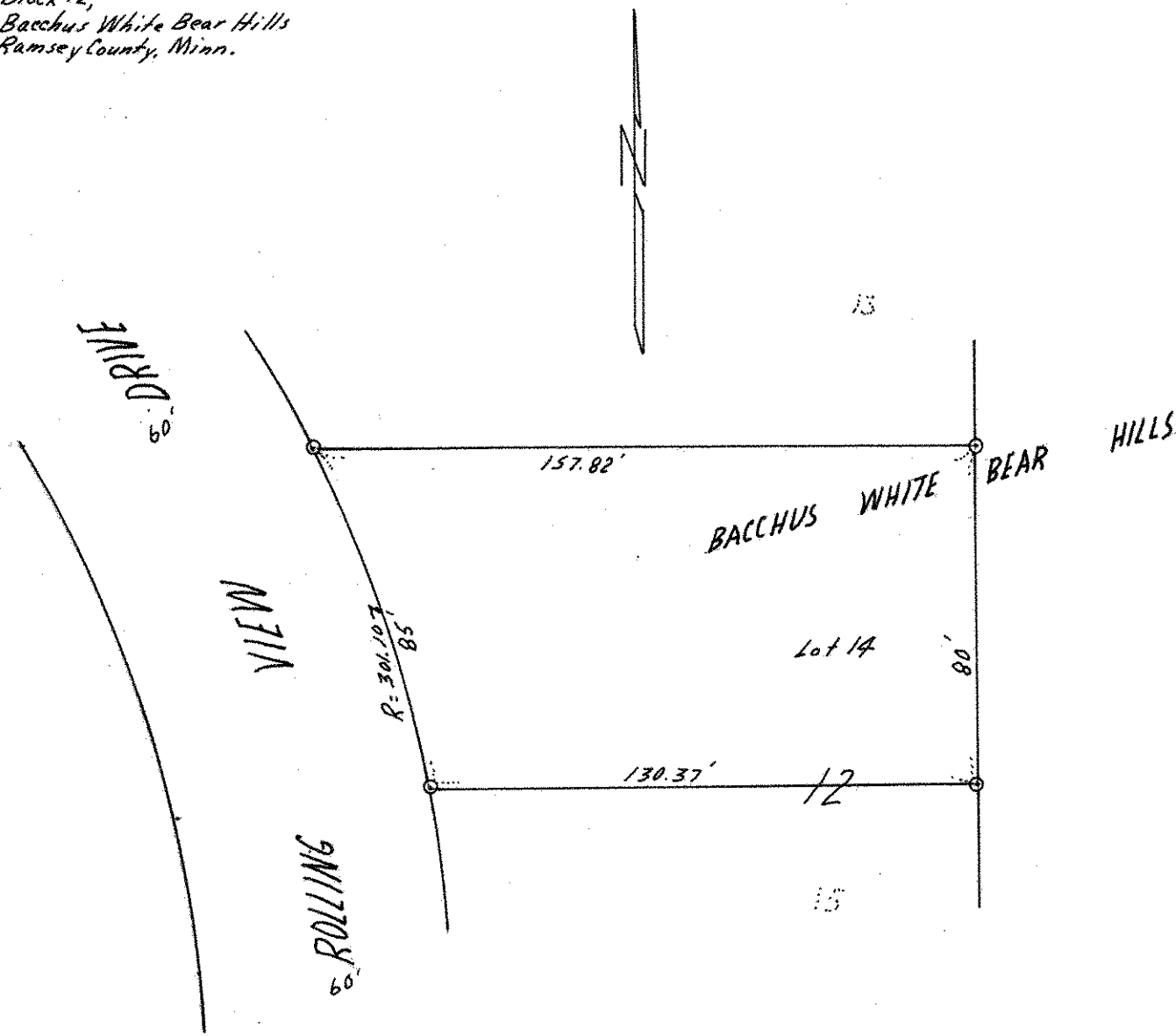
Date *April 19, 70*

Scale *1" = 40'*

By *Charles O. Georgi*  
REGISTERED LAND SURVEYOR

**Description:**

*Lot 14,  
Block 12,  
Bacchus White Bear Hills  
Ramsey County, Minn.*



○ Denotes Iron Monument